

EXPLANATORY PLAN OF STATUTORY RIGHT OF WAY OVER PART OF LOT 1, DISTRICT LOT 4047, CARIBOO DISTRICT, PLAN 20899, EXCEPT PLAN 29402.

PLAN EPP66499

PURSUANT TO SECTION 99(1)(e) OF THE LAND TITLE ACT.

BCGS 93G.097

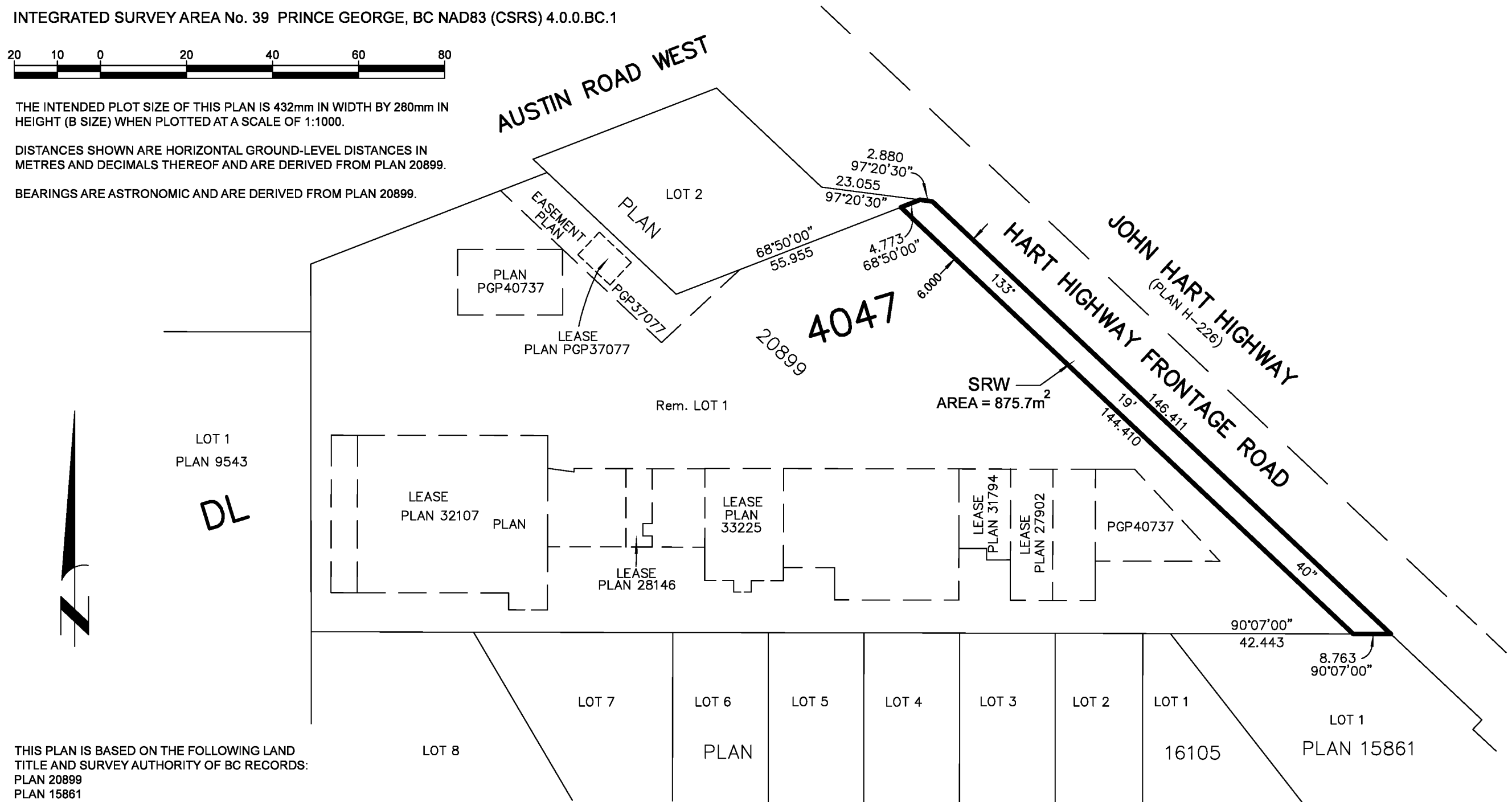
INTEGRATED SURVEY AREA No. 39 PRINCE GEORGE, BC NAD83 (CSRS) 4.0.0.BC.1



THE INTENDED PLOT SIZE OF THIS PLAN IS 432mm IN WIDTH BY 280mm IN HEIGHT (B SIZE) WHEN PLOTTED AT A SCALE OF 1:1000.

DISTANCES SHOWN ARE HORIZONTAL GROUND-LEVEL DISTANCES IN METRES AND DECIMALS THEREOF AND ARE DERIVED FROM PLAN 20899.

BEARINGS ARE ASTRONOMIC AND ARE DERIVED FROM PLAN 20899.



THIS PLAN IS BASED ON THE FOLLOWING LAND TITLE AND SURVEY AUTHORITY OF BC RECORDS:
PLAN 20899
PLAN 15861

DARREN KENT, BCLS 904
13th DAY OF DECEMBER, 2016

THIS PLAN LIES WITHIN THE REGIONAL DISTRICT OF FRASER-FORT GEORGE

McElhanney
McELHANNEY ASSOCIATES
LAND SURVEYING LTD.
Suite 12
556 North Nechako Road
Prince George BC
Canada V2K 1A1
Tel 250 561 2229

File No. 2341-06469-SRW