

**REFERENCE PLAN OF COVENANT OVER PART OF LOT 1,  
DISTRICT LOT 4028, CARIBOO DISTRICT,  
PLAN 23398, EXCEPT PLAN 24401.**

**PLAN EPP66496**

PURSUANT TO SECTION 99(1)(e) OF THE LAND TITLE ACT  
FOR COVENANT PURPOSES

INTEGRATED SURVEY AREA No. 39 PRINCE GEORGE, BC, NAD83 (CSRS) 4.0.0.BC.1

BCGS 93G.097



THE INTENDED PLOT SIZE OF THIS PLAN IS 560 mm IN WIDTH BY 432 mm  
IN HEIGHT (C SIZE) WHEN PLOTTED AT A SCALE OF 1:1000.

ALL DISTANCES ARE IN METRES AND DECIMALS THEREOF.

GRID BEARINGS ARE DERIVED FROM OBSERVATIONS BETWEEN GEODETIC  
CONTROL MONUMENTS 86H1665 AND 86H1805.

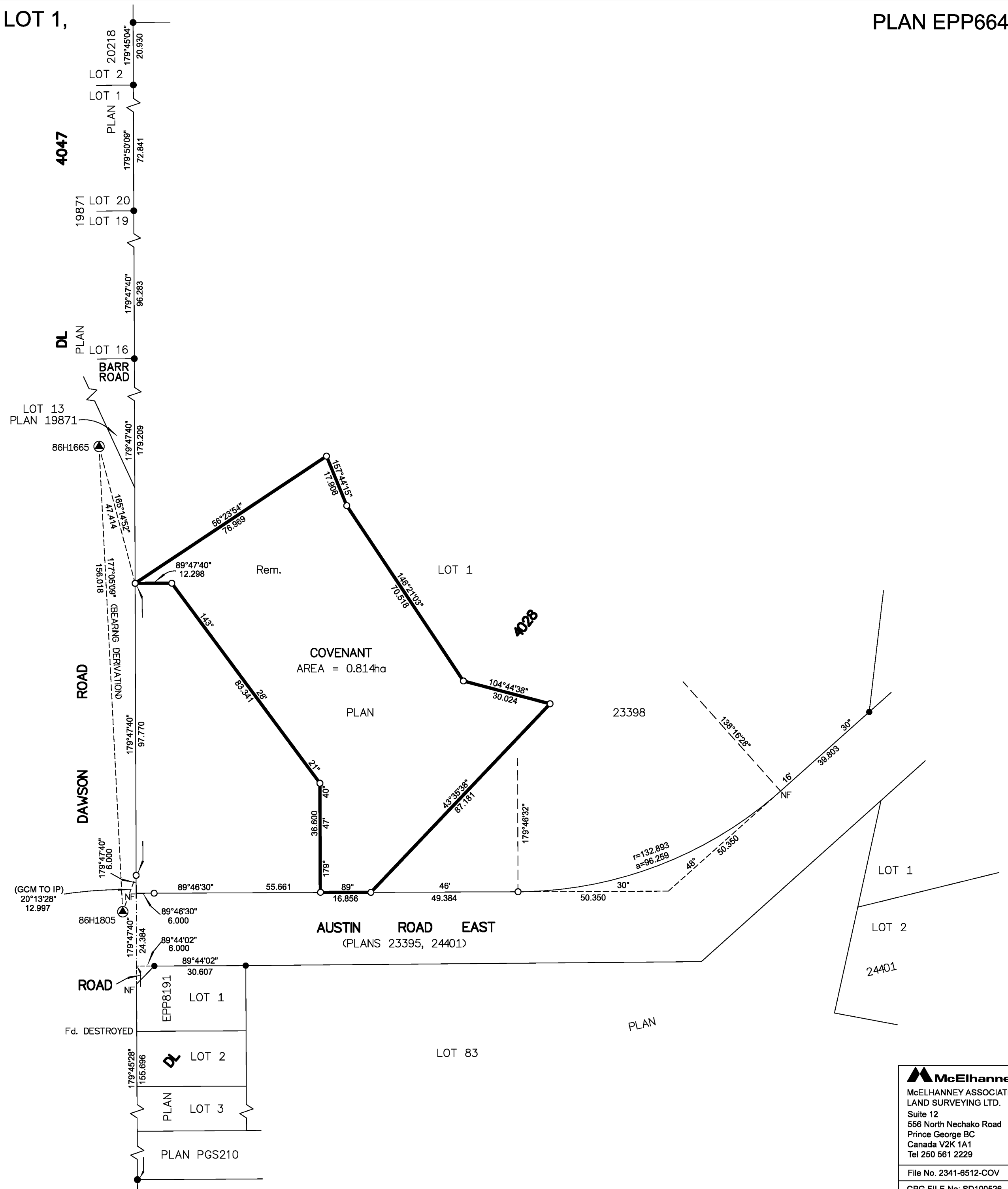
THE UTM COORDINATES AND ESTIMATED HORIZONTAL POSITIONAL  
ACCURACY ACHIEVED HAVE BEEN DERIVED FROM MASCOT PUBLISHED  
COORDINATES AND STANDARD DEVIATIONS FOR GEODETIC CONTROL  
MONUMENTS 86H1665 AND 86H1805.

THIS PLAN SHOWS HORIZONTAL GROUND-LEVEL DISTANCES UNLESS  
OTHERWISE SPECIFIED. TO COMPUTE GRID DISTANCES, MULTIPLY  
GROUND-LEVEL DISTANCES BY THE AVERAGE COMBINED FACTOR OF  
0.9994901 WHICH HAS BEEN DERIVED FROM CONTROL MONUMENTS 86H1665  
AND 86H1805.

**LEGEND**

SYMBOLS		DESCRIPTION
FOUND	PLACED	
		CONTROL MONUMENT
		STANDARD IRON POST
CSF		COMBINED SCALE FACTOR
EHPA		ESTIMATED HORIZONTAL POSITIONAL ACCURACY

GEOREFERENCING POSITIONS UTM COORDINATES, ZONE 10, NAD 83 (CSRS), 4.0.0.BC.1				
STATION	NORTHING	EASTING	EHPA	CSF
86H1665	5982546.43	514632.09	0.09	0.9994901
86H1805	5982390.70	514640.02	0.09	0.9994901



INSPECTED UNDER THE LAND TITLE ACT ON THE 24th OF MAY, 2018

THIS PLAN LIES WITHIN THE JURISDICTION OF THE APPROVING OFFICER FOR  
THE CITY OF PRINCE GEORGE.

THE FIELD SURVEY REPRESENTED BY THIS PLAN WAS COMPLETED  
ON THE 29th DAY OF AUGUST, 2017  
SHAUNA C. GOERTZEN, BCLS 798

THIS PLAN LIES WITHIN THE REGIONAL DISTRICT OF FRASER-FORT GEORGE

**McElhanney**  
McELHANNEY ASSOCIATES  
LAND SURVEYING LTD.  
Suite 12  
556 North Nechako Road  
Prince George BC  
Canada V2K 1A1  
Tel 250 561 2229

---

File No. 2341-6512-COV  
CPG FILE No: SD100526