

SUBDIVISION PLAN OF PART OF LOT 1, DISTRICT LOT 4028, CARIBOO DISTRICT, PLAN 23398, EXCEPT PLAN 24401.

PLAN EPP66495

PURSUANT TO SECTION 67 OF THE LAND TITLE ACT

INTEGRATED SURVEY AREA No. 39 PRINCE GEORGE, BC, NAD83 (CSRS) 4.0.0.BC.1
BCGS 93G.097



THE INTENDED PLOT SIZE OF THIS PLAN IS 560 mm IN WIDTH BY 432 mm IN HEIGHT (C SIZE) WHEN PLOTTED AT A SCALE OF 1:1000.

ALL DISTANCES ARE IN METRES AND DECIMALS THEREOF.

GRID BEARINGS ARE DERIVED FROM OBSERVATIONS BETWEEN GEODETIC CONTROL MONUMENTS 86H1665 AND 86H1805.

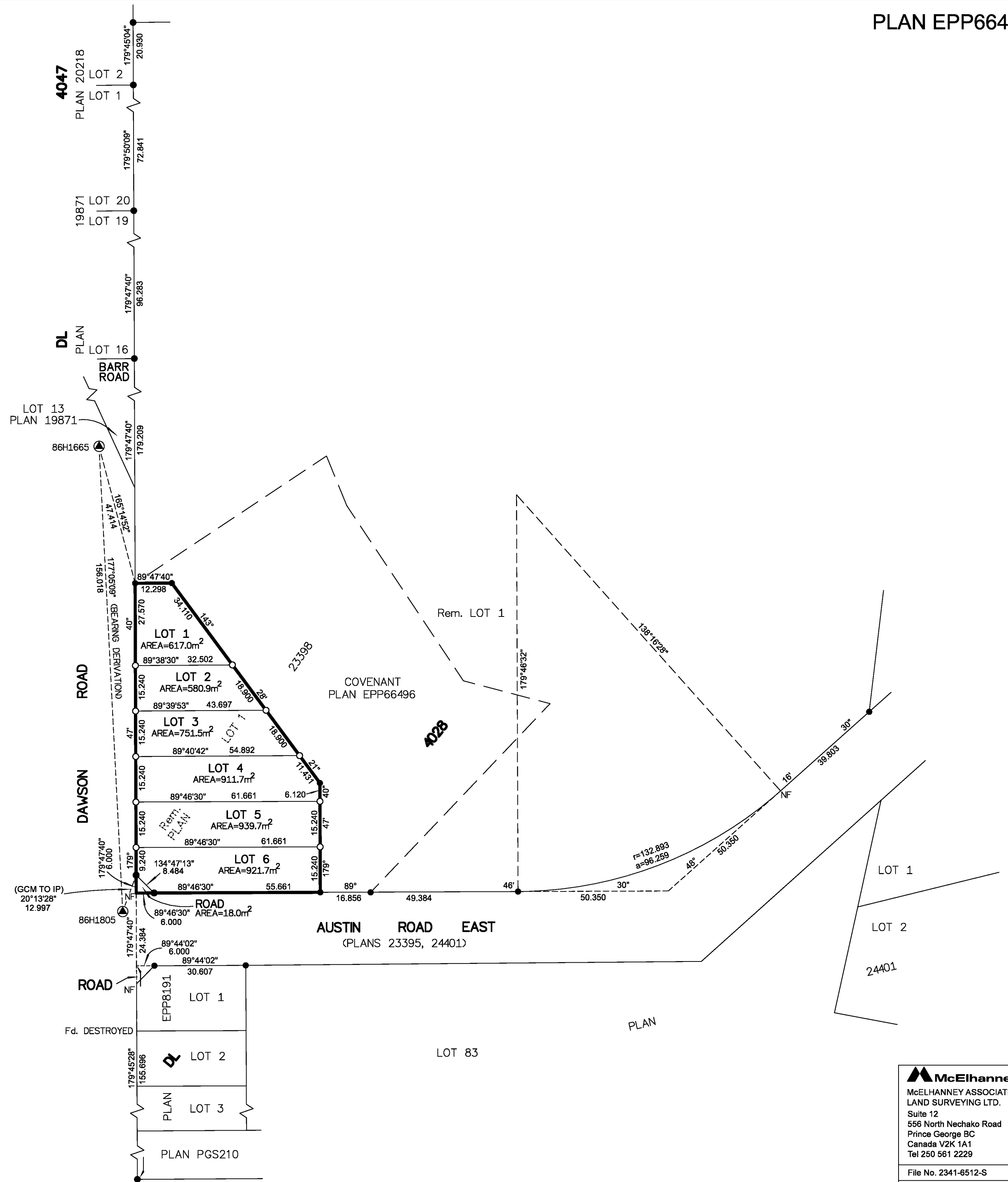
THE UTM COORDINATES AND ESTIMATED HORIZONTAL POSITIONAL ACCURACY ACHIEVED HAVE BEEN DERIVED FROM MASCOT PUBLISHED COORDINATES AND STANDARD DEVIATIONS FOR GEODETIC CONTROL MONUMENTS 86H1665 AND 86H1805.

THIS PLAN SHOWS HORIZONTAL GROUND-LEVEL DISTANCES UNLESS OTHERWISE SPECIFIED. TO COMPUTE GRID DISTANCES, MULTIPLY GROUND-LEVEL DISTANCES BY THE AVERAGE COMBINED FACTOR OF 0.9994901 WHICH HAS BEEN DERIVED FROM CONTROL MONUMENTS 86H1665 AND 86H1805.

LEGEND

SYMBOLS		DESCRIPTION
FOUND	PLACED	
		CONTROL MONUMENT
		STANDARD IRON POST
	CSF	COMBINED SCALE FACTOR
	EHPA	ESTIMATED HORIZONTAL POSITIONAL ACCURACY

GEOREFERENCING POSITIONS UTM COORDINATES, ZONE 10, NAD 83 (CSRS), 4.0.0.BC.1				
STATION	NORTHING	EASTING	EHPA	CSF
86H1665	5982546.43	514632.09	0.09	0.9994901
86H1805	5982390.70	514640.02	0.09	0.9994901



INSPECTED UNDER THE LAND TITLE ACT ON THE 14th OF JANUARY, 2019

THIS PLAN LIES WITHIN THE JURISDICTION OF THE APPROVING OFFICER FOR THE CITY OF PRINCE GEORGE.
CPG FILE No. SD100526

THE FIELD SURVEY REPRESENTED BY THIS PLAN WAS COMPLETED ON THE 29th DAY OF AUGUST, 2017
SHAUNA C. GOERTZEN, BCLS 798

THIS PLAN LIES WITHIN THE REGIONAL DISTRICT OF FRASER-FORT GEORGE

McElhanney
McELHANNEY ASSOCIATES
LAND SURVEYING LTD.
Suite 12
556 North Nechako Road
Prince George BC
Canada V2K 1A1
Tel 250 561 2229

File No. 2341-6512-S
CPG FILE No. SD100526