

**SUBDIVISION PLAN OF PART OF LOT A,
DISTRICT LOT 954, CARIBOO DISTRICT,
PLAN 14964 EXCEPT PLAN 27408.**

PLAN EPP66309

PURSUANT TO SECTION 67 OF LAND TITLE ACT

INTEGRATED SURVEY AREA No. 39 PRINCE GEORGE, BC, NAD83(CSRS) 4.0.0.BC.1

BCGS 93G.097



THE INTENDED PLOT SIZE OF THIS PLAN IS 432 mm IN WIDTH BY 560 mm IN HEIGHT (C SIZE) WHEN PLOTTED AT A SCALE OF 1:1000

ALL DISTANCES ARE IN METRES AND DECIMALS THEREOF.

GRID BEARINGS ARE DERIVED FROM OBSERVATIONS BETWEEN GEODETIC CONTROL MONUMENTS 85H1280 AND 85H12550.

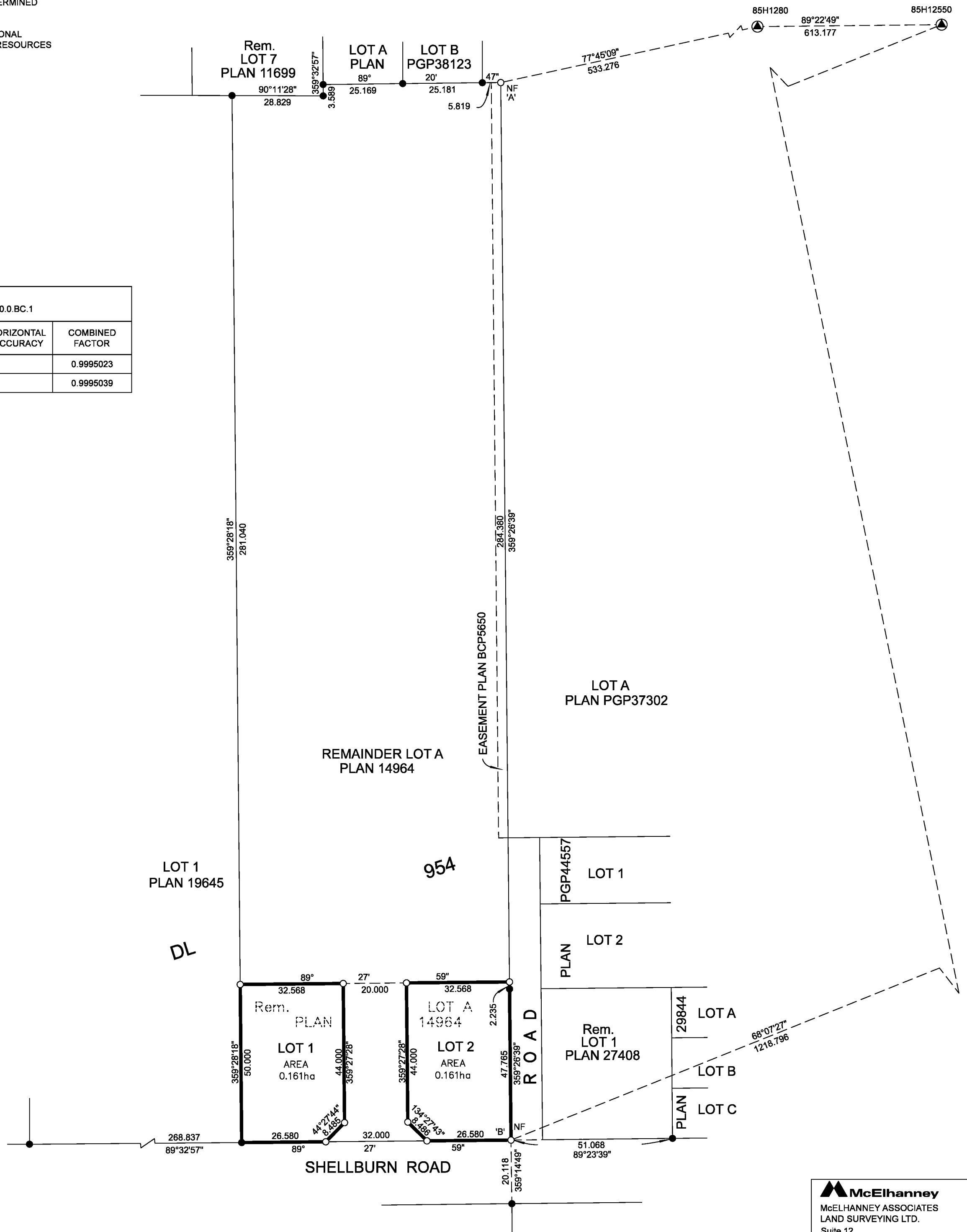
THIS PLAN SHOWS HORIZONTAL GROUND-LEVEL DISTANCES UNLESS OTHERWISE SPECIFIED. TO COMPUTE GRID DISTANCES, MULTIPLY GROUND-LEVEL DISTANCES BY THE AVERAGE COMBINED FACTOR OF 0.99950354. THE AVERAGE COMBINED FACTOR HAS BEEN DETERMINED BASED ON AN ELLIPSOIDAL ELEVATION OF 657.6 METRES.

THE UTM COORDINATES AND ESTIMATED HORIZONTAL POSITIONAL ACCURACY ACHIEVED HAVE BEEN DERIVED FROM NATURAL RESOURCES CANADA PRECISE POINT POSITIONING SERVICE.

LEGEND

SYMBOLS		DESCRIPTION
FOUND	PLACED	
		CONTROL MONUMENT
		STANDARD IRON POST

GEOREFERENCING POSITIONS UTM COORDINATES, ZONE 10, NAD 83 (CSRS), 4.0.0.BC.1				
STATION	NORTHING	EASTING	ESTIMATED HORIZONTAL POSITIONAL ACCURACY	COMBINED FACTOR
PLIP'A'	5974580.08	523473.42	0.05	0.9995023
PLIP'B'	5974245.89	523476.67	0.05	0.9995039



INSPECTED UNDER THE LAND TITLE ACT ON THE 6th OF DECEMBER, 2017.

THIS PLAN LIES WITHIN THE JURISDICTION OF THE APPROVING OFFICER FOR THE CITY OF PRINCE GEORGE. CPG FILE: SD100505

THE FIELD SURVEY REPRESENTED BY THIS PLAN WAS COMPLETED ON THE 19th DAY OF SEPTEMBER, 2016. SHAUNA C. GOERTZEN, BCLS 798

THIS PLAN LIES WITHIN THE REGIONAL DISTRICT OF FRASER-FORT GEORGE

McElhanney
 McELHANNEY ASSOCIATES
 LAND SURVEYING LTD.
 Suite 12
 556 North Nechako Road
 Prince George BC
 Canada V2K 1A1
 Tel 250 561 2229
 File No. 2341-6483-S