

REFERENCE PLAN OF CONSOLIDATION OF THE EAST 1/2 OF LOT 5
EXCEPT PLAN PGP43029, THE WEST 1/2 OF LOT 5 EXCEPT PLAN
PGP43029 AND LOT 6 EXCEPT PLANS PGP41693 AND PGP43029; ALL IN
BLOCK 9, DISTRICT LOT 2508, CARIBOO DISTRICT, PLAN 837.

PLAN EPP65123

PURSUANT TO SECTION 100(1)(b) OF THE LAND TITLE ACT.

INTEGRATED SURVEY AREA No. 39 PRINCE GEORGE, BC

BCGS 93G.096



THE INTENDED PLOT SIZE OF THIS PLAN IS 560 mm IN WIDTH BY 432 mm IN HEIGHT (C SIZE) WHEN PLOTTED AT A SCALE OF 1:2000.

ALL DISTANCES ARE IN METRES AND DECIMALS THEREOF.

GRID BEARINGS ARE DERIVED FROM OBSERVATIONS BETWEEN GEODETIC CONTROL MONUMENTS 85H1310 AND 85H1206.

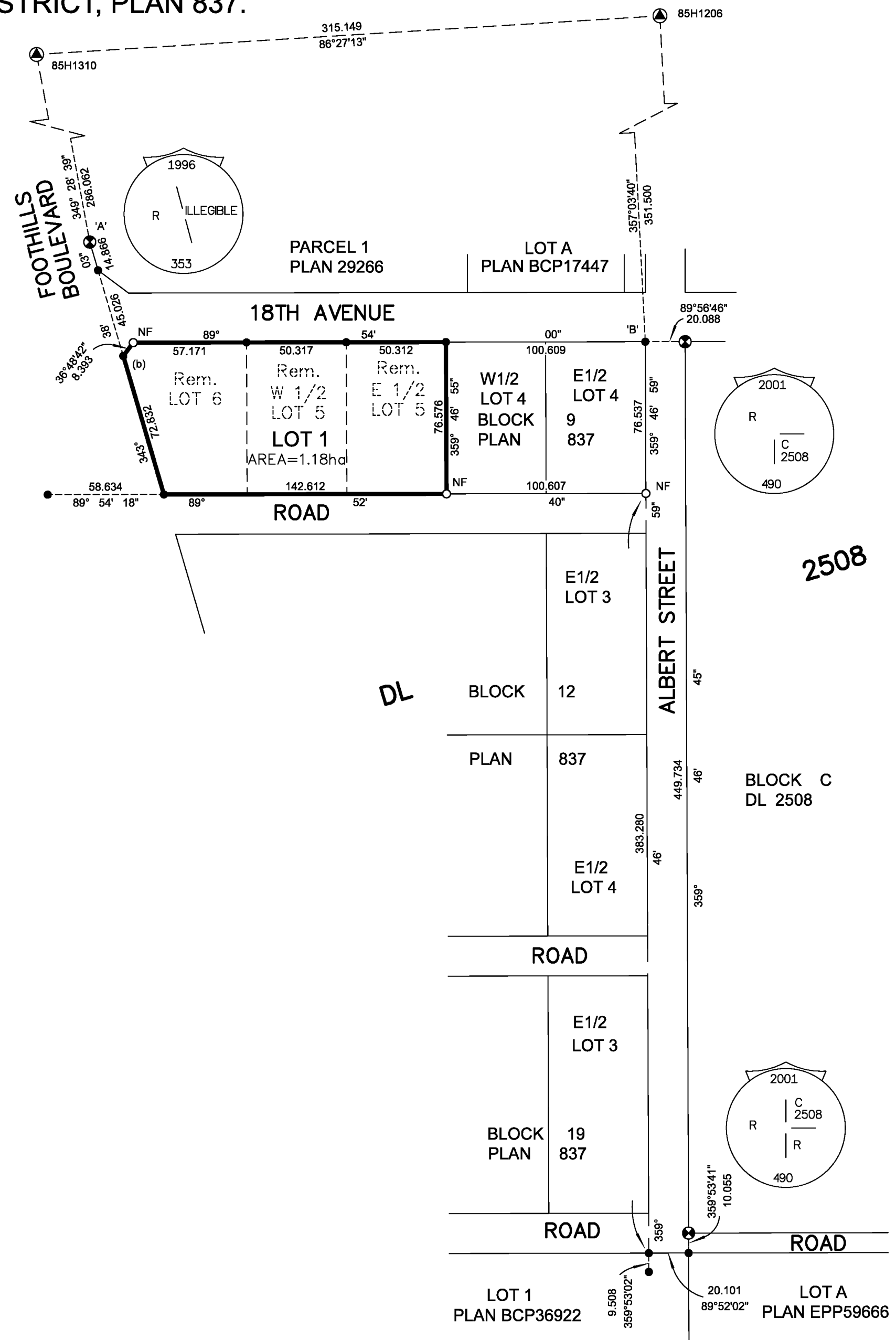
THIS PLAN SHOWS HORIZONTAL GROUND-LEVEL DISTANCES UNLESS OTHERWISE SPECIFIED. TO COMPUTE GRID DISTANCES, MULTIPLY GROUND-LEVEL DISTANCES BY THE AVERAGE COMBINED FACTOR OF 0.9995092 WHICH HAS BEEN DERIVED FROM GEODETIC CONTROL MONUMENTS 85H1310 AND 85H1206

THE UTM COORDINATES AND ESTIMATED HORIZONTAL POSITIONAL ACCURACY ACHIEVED HAVE BEEN DERIVED FROM MASCOT PUBLISHED COORDINATES AND STANDARD DEVIATIONS FOR GEODETIC CONTROL MONUMENT 85H1310.

LEGEND

- | FOUND | PLACED | DESCRIPTION |
|-------|--------|----------------------|
| ▲ | | CONTROL MONUMENT |
| ⊙ | | STANDARD CAPPED POST |
| ● | ○ | STANDARD IRON POST |
| (b) | | BURIED |

GEOREFERENCING POSITIONS UTM COORDINATES, ZONE 10, NAD 83 (CSRS), 4.0.0.BC.1			
STATION	NORTHING	EASTING	ESTIMATED HORIZONTAL POSITIONAL ACCURACY
Fd.CP'A'	5973267.78	512424.53	0.05m
Fd.IP'B'	5973217.51	512704.72	0.05m



THIS PLAN IS PREPARED AS THE OFFICIAL PLAN OF THE LANDS SHOWN HEREON FOR THE SURVEYOR GENERAL.

THE FIELD SURVEY REPRESENTED BY THIS PLAN WAS COMPLETED ON THE 15th DAY OF AUGUST, 2016
SHAUNA C. GOERTZEN, BCLS 798

THIS PLAN LIES WITHIN THE REGIONAL DISTRICT OF FRASER-FORT GEORGE

McElhanney
McELHANNEY ASSOCIATES
LAND SURVEYING LTD.
Suite 12
556 North Nechako Road
Prince George BC
Canada V2K 1A1
Tel 250 561 2229
File No. 2341-6479-CON