

SUBDIVISION PLAN OF LOTS 34 AND 35, DISTRICT LOT 1605, CARIBOO DISTRICT, PLAN EPP41947

PLAN EPP65090

PURSUANT TO SECTION 67 OF LAND TITLE ACT

INTEGRATED SURVEY AREA No. 39 PRINCE GEORGE, BC

BCGS 93G.087



THE INTENDED PLOT SIZE OF THIS PLAN IS 432MM IN WIDTH BY 280MM IN HEIGHT (B SIZE) WHEN PLOTTED AT A SCALE OF 1:500.

ALL DISTANCES ARE IN METRES AND DECIMALS THEREOF.

GRID BEARINGS ARE DERIVED FROM OBSERVATIONS BETWEEN GEODETIC CONTROL MONUMENTS 86H1821 AND 86H1831

THIS PLAN SHOWS HORIZONTAL GROUND-LEVEL DISTANCES UNLESS OTHERWISE SPECIFIED. TO COMPUTE GRID DISTANCES, MULTIPLY GROUND-LEVEL DISTANCES BY THE AVERAGE COMBINED FACTOR OF 0.9995033 WHICH HAS BEEN DERIVED FROM GEODETIC CONTROL MONUMENT 86H1831

THE UTM COORDINATES AND ESTIMATED HORIZONTAL POSITIONAL ACCURACY ACHIEVED HAVE BEEN DERIVED FROM MASCOT PUBLISHED COORDINATES AND STANDARD DEVIATIONS FOR GEODETIC CONTROL MONUMENT 86H1831

GEOREFERENCING POSITIONS UTM COORDINATES, ZONE 10, NAD 83 (CSRS), 4.0.0.BC.1			
STATION	NORTHING	EASTING	ESTIMATED HORIZONTAL POSITIONAL ACCURACY
Fd.IP'A'	5967072.39	514217.29	0.05
Fd.IP'B'	5967038.02	514235.31	0.05

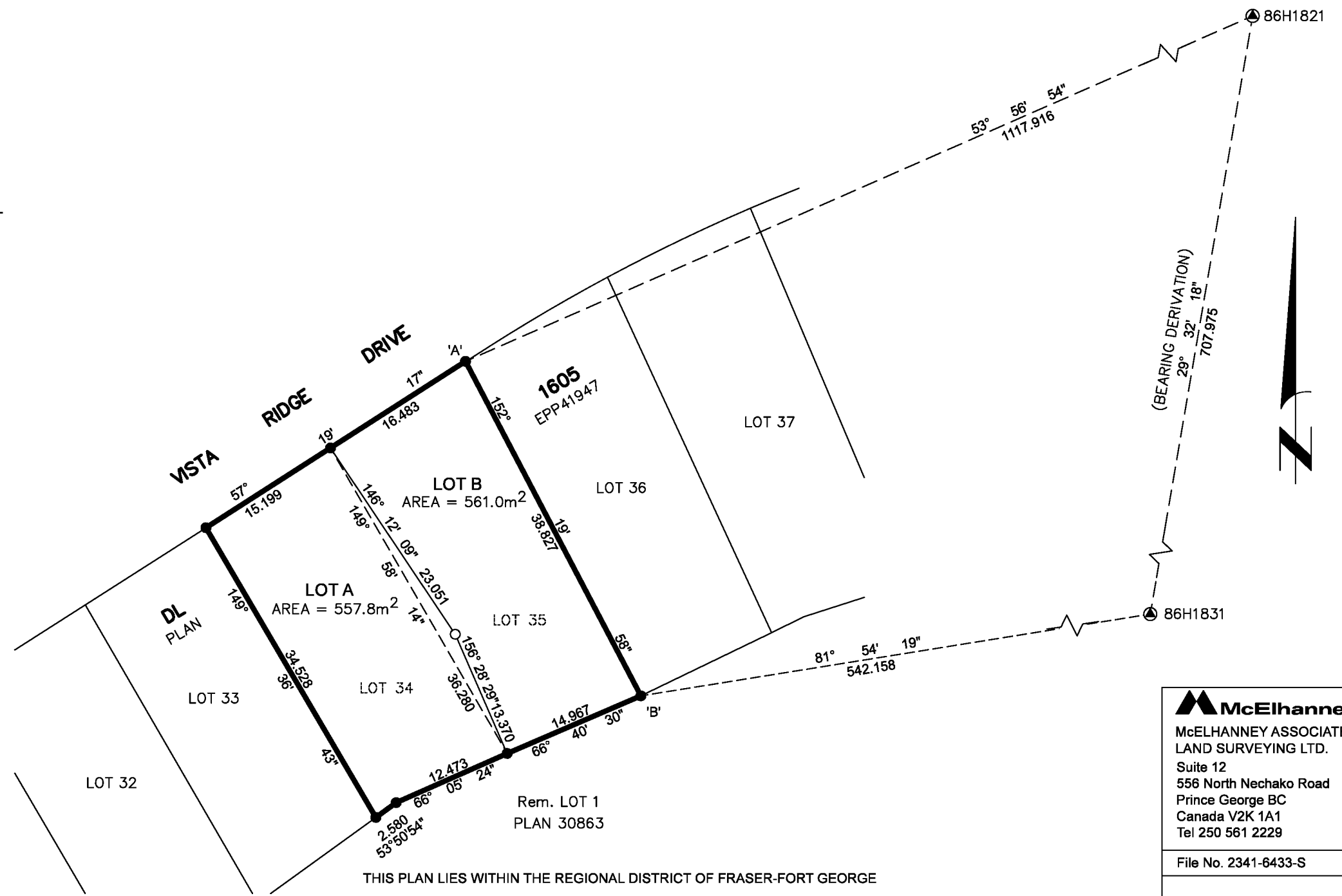
LEGEND

SYMBOLS		DESCRIPTION
FOUND	PLACED	
⊙		CONTROL MONUMENT
●	○	STANDARD IRON POST

THIS PLAN LIES WITHIN THE JURISDICTION OF THE APPROVING OFFICER FOR THE CITY OF PRINCE GEORGE
FILE: SD100521

THE FIELD SURVEY REPRESENTED BY THIS PLAN WAS COMPLETED ON THE 28TH DAY OF JULY, 2016

SHAUNA C. GOERTZEN, BCLS 798



THIS PLAN LIES WITHIN THE REGIONAL DISTRICT OF FRASER-FORT GEORGE

McElhanney
McELHANNEY ASSOCIATES
LAND SURVEYING LTD.
Suite 12
556 North Nechako Road
Prince George BC
Canada V2K 1A1
Tel 250 561 2229

File No. 2341-6433-S