

REFERENCE PLAN OF ROAD DEDICATION OVER PART OF PARCEL A, DISTRICT LOT 629, CARIBOO DISTRICT, PLAN 902, EXCEPT PLAN 34343.

PLAN EPP6480

BCCS 93G.097
PURSUANT TO SECTION 107 OF THE LAND TITLE ACT.

THE INTENDED PLOT SIZE OF THIS PLAN IS 864mm IN WIDTH BY 560mm IN HEIGHT (D SIZE) WHEN PLOTTED AT A SCALE OF 1:2500

50m 0 50 100 150m

ALL DISTANCES ARE SHOWN IN METRES AND DECIMALS THEREOF, UNLESS OTHERWISE INDICATED.

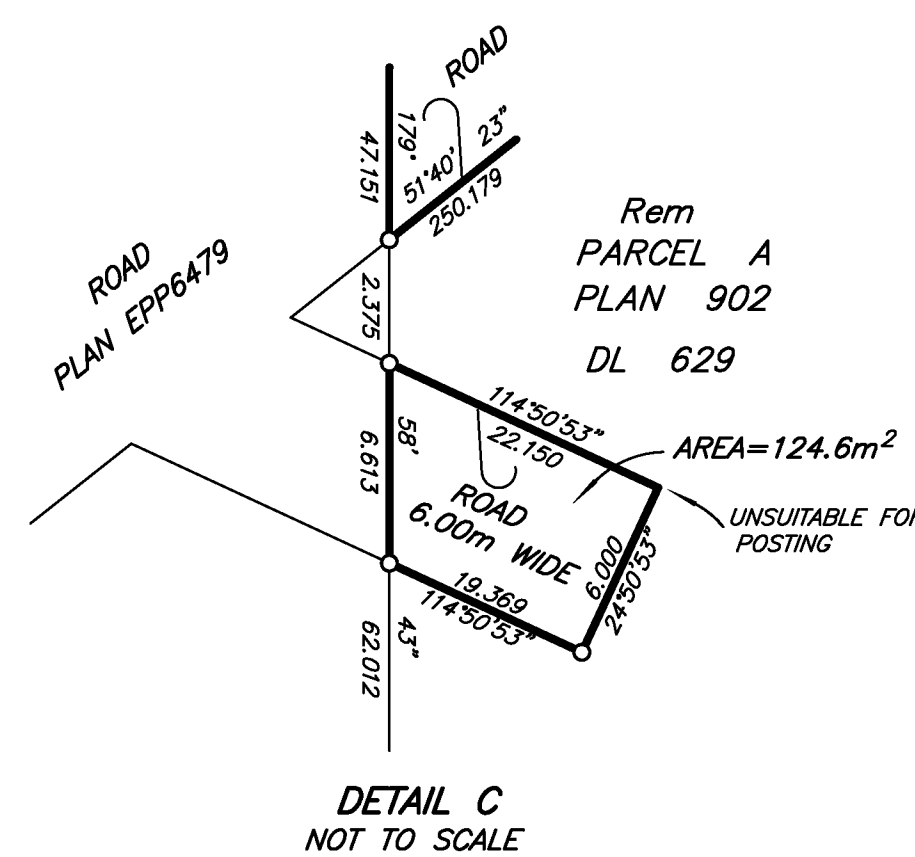
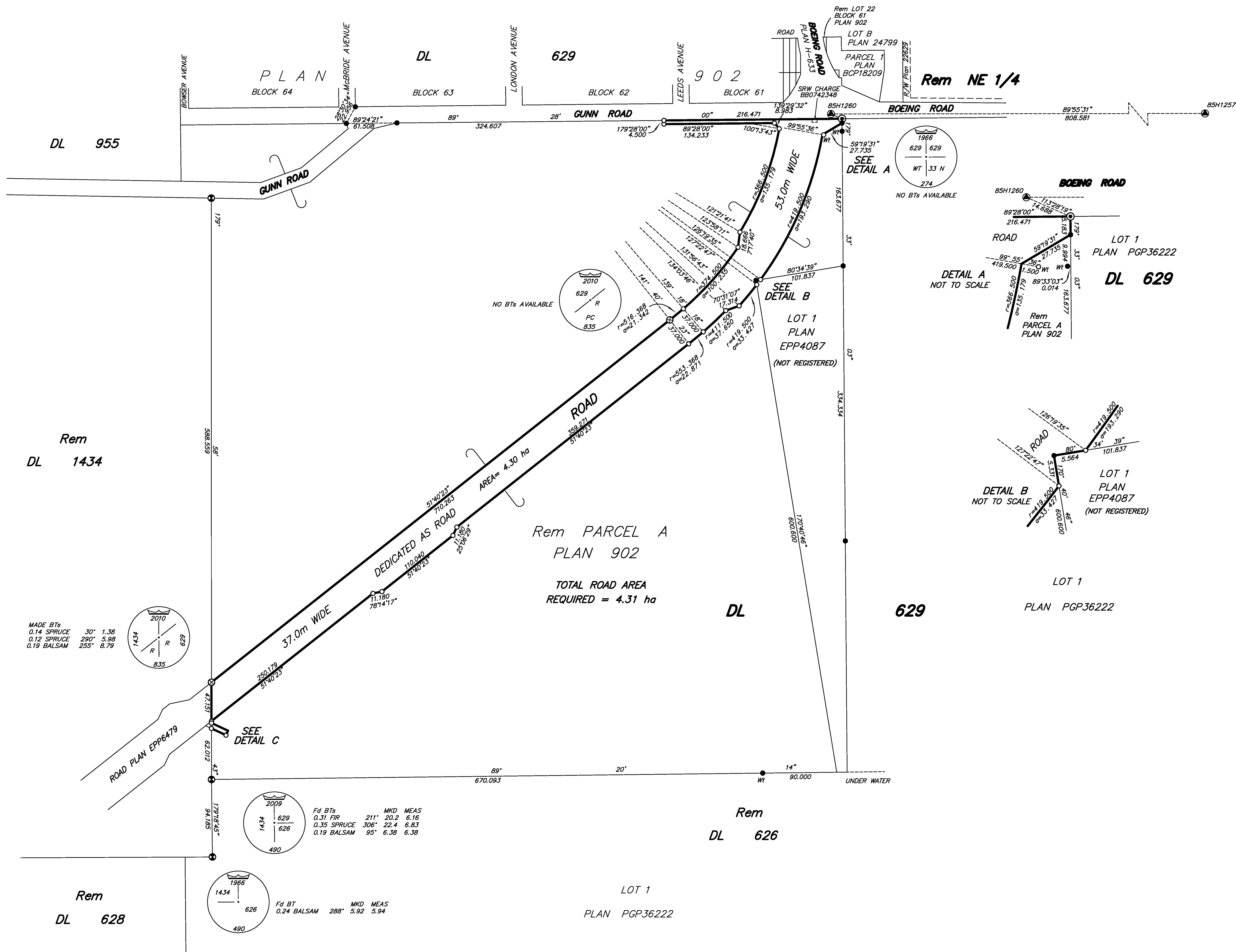
LEGEND

GRID BEARINGS ARE DERIVED FROM OBSERVATIONS BETWEEN CONTROL MONUMENTS 85H1260 AND 85H1257.

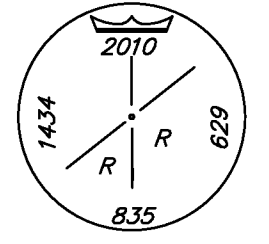
- ⊙ DENOTES CONTROL MONUMENT FOUND
- ⊙ DENOTES STANDARD CONCRETE POST FOUND
- ⊙ DENOTES STANDARD CAPPED POST FOUND
- ⊙ DENOTES STANDARD CAPPED POST PLACED
- ⊙ DENOTES STANDARD IRON POST FOUND
- DENOTES STANDARD IRON POST PLACED

THIS PLAN SHOWS HORIZONTAL GROUND-LEVEL DISTANCES EXCEPT WHERE OTHERWISE NOTED. TO COMPUTE GRID DISTANCES, MULTIPLY GROUND-LEVEL DISTANCES BY COMBINED FACTOR 0.9995004.

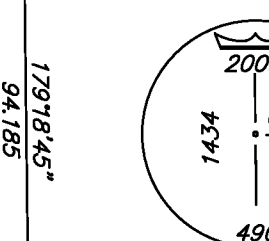
BEARINGS TO BEARING TREES ARE MAGNETIC.



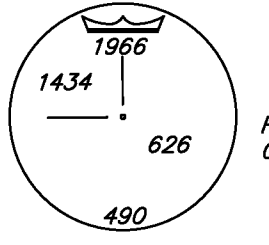
MADE BTs			
0.14 SPRUCE	30°	1.38	
0.12 SPRUCE	290°	5.38	
0.19 BALSAM	255°	8.79	



Fd BTs	MKD MEAS
0.31 FIR	211° 20.2 6.16
0.35 SPRUCE	306° 22.4 6.83
0.19 BALSAM	95° 6.38 6.38



Fd BT	MKD MEAS
0.24 BALSAM	288° 5.92 5.94



THIS PLAN LIES WITHIN THE JURISDICTION OF THE APPROVING OFFICER FOR THE MINISTRY OF TRANSPORTATION AND INFRASTRUCTURE.

THIS PLAN LIES WITHIN THE JURISDICTION OF THE APPROVING OFFICER FOR THE CITY OF PRINCE GEORGE.

THE FIELD SURVEY REPRESENTED BY THIS PLAN WAS COMPLETED BY DAVID E. STORBACK, BCLS ON THE 16th DAY OF MARCH, 2010.

THIS PLAN LIES WITHIN THE REGIONAL DISTRICT OF FRASER - FORT GEORGE.

McElhanney
McElhanney Associates
Land Surveying Ltd.
Prince George, B.C.
Ph: (250) 561-2229 Fax: 563-1941

DL- 629 File No. - 5793 DWG RD10