

REFERENCE PLAN OF ROAD DEDICATION OVER PART OF LOT 1, DISTRICT LOT 748, CARIBOO DISTRICT, PLAN 11713.

PLAN EPP6474

BCGS 93G.087

PURSUANT TO SECTION 107 OF THE LAND TITLE ACT.

THE INTENDED PLOT SIZE OF THIS PLAN IS 864mm IN WIDTH BY 560mm IN HEIGHT (D SIZE) WHEN PLOTTED AT A SCALE OF 1:2500

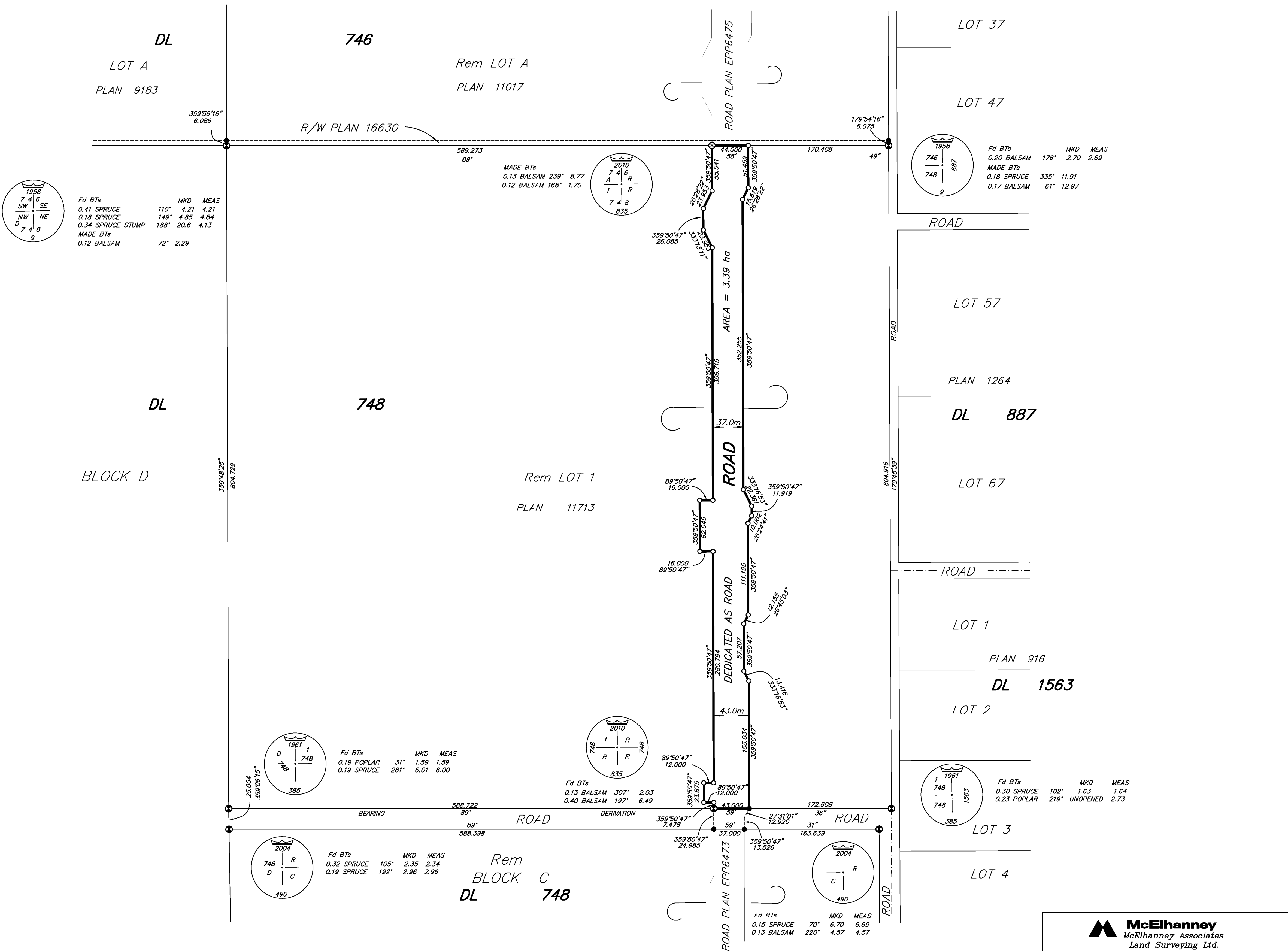
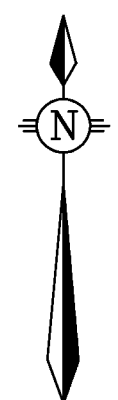
40m 0 40 80 120 160m

ALL DISTANCES ARE SHOWN IN METRES AND DECIMALS THEREOF, UNLESS OTHERWISE INDICATED.

LEGEND
 GRID BEARINGS ARE DERIVED FROM THE NORTH BOUNDARY OF BLOCK C, DL 748, AS SHOWN ON PLAN EPP6473.
 ● DENOTES STANDARD IRON POST FOUND
 ○ DENOTES STANDARD IRON POST PLACED
 ⊙ DENOTES STANDARD CAPPED POST FOUND
 ⊗ DENOTES STANDARD CAPPED POST PLACED

THIS PLAN SHOWS HORIZONTAL GROUND-LEVEL DISTANCES EXCEPT WHERE OTHERWISE NOTED.

BEARINGS TO BEARING TREES ARE MAGNETIC



THIS PLAN LIES WITHIN THE JURISDICTION OF THE APPROVING OFFICER FOR THE CITY OF PRINCE GEORGE.

THE FIELD SURVEY REPRESENTED BY THIS PLAN WAS COMPLETED BY DAVID E. STORBACK, BCLS ON THE 22nd DAY OF MARCH, 2010.

THIS PLAN LIES WITHIN THE REGIONAL DISTRICT OF FRASER - FORT GEORGE.

McElhanney
 McElhanney Associates
 Land Surveying Ltd.
 Prince George, B.C.
 Ph: (250) 561-2229 Fax: 563-1941

D.L.- 748	File No. - 5793	DWG	RD4
-----------	-----------------	-----	-----