

**REFERENCE PLAN OF ROAD DEDICATION
OVER PART OF PARCEL 1, DLs 748
AND 750, CARIBOO DISTRICT, PLAN 32973.**

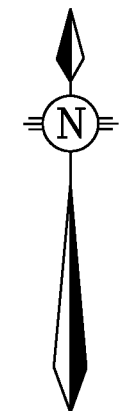
PLAN EPP6471

BCGS 93G.087
PURSUANT TO SECTION 107 OF THE LAND TITLE ACT.
THIS PLAN LIES WITHIN INTEGRATED SURVEY AREA
No. 39, PRINCE GEORGE, NAD83 (CSRS) 4.0.0.BC.1

THE INTENDED PLOT SIZE OF THIS PLAN IS 864mm IN WIDTH BY
560mm IN HEIGHT (D SIZE) WHEN PLOTTED AT A SCALE OF 1:1500
30m 0 30 60 90 120m

ALL DISTANCES ARE SHOWN IN METRES AND DECIMALS
THEREOF, UNLESS OTHERWISE INDICATED.

LEGEND
GRID BEARINGS ARE DERIVED FROM OBSERVATIONS
BETWEEN CONTROL MONUMENTS 86H1797 AND 86H1796.
● DENOTES CONTROL MONUMENT FOUND
● DENOTES STANDARD IRON POST FOUND
○ DENOTES STANDARD IRON POST PLACED
○ DENOTES STANDARD CAPPED POST FOUND
THIS PLAN SHOWS HORIZONTAL GROUND-LEVEL DISTANCES EXCEPT
WHERE OTHERWISE NOTED. TO COMPUTE GRID DISTANCES, MULTIPLY
GROUND-LEVEL DISTANCES BY COMBINED FACTOR 0.9995026.
BEARINGS TO BEARING TREES ARE MAGNETIC



CAP ILLEGIBLE

Fd BTs	MKD	MEAS
0.15 BALSAM	35°	6.92 6.92
0.38 SPRUCE SNAG	30°	7.5 7.55
0.18 POPLAR	61°	4.59 4.57

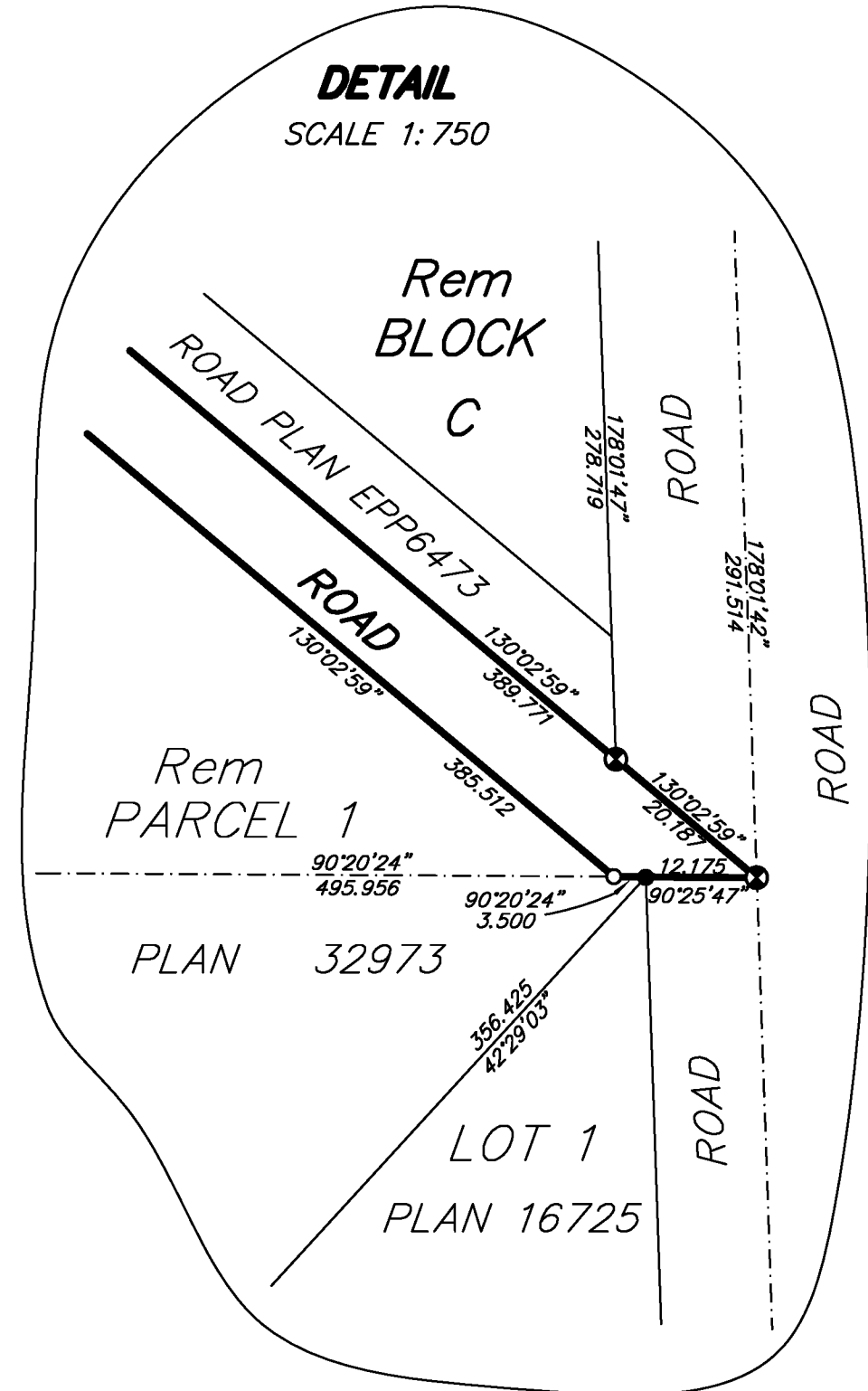
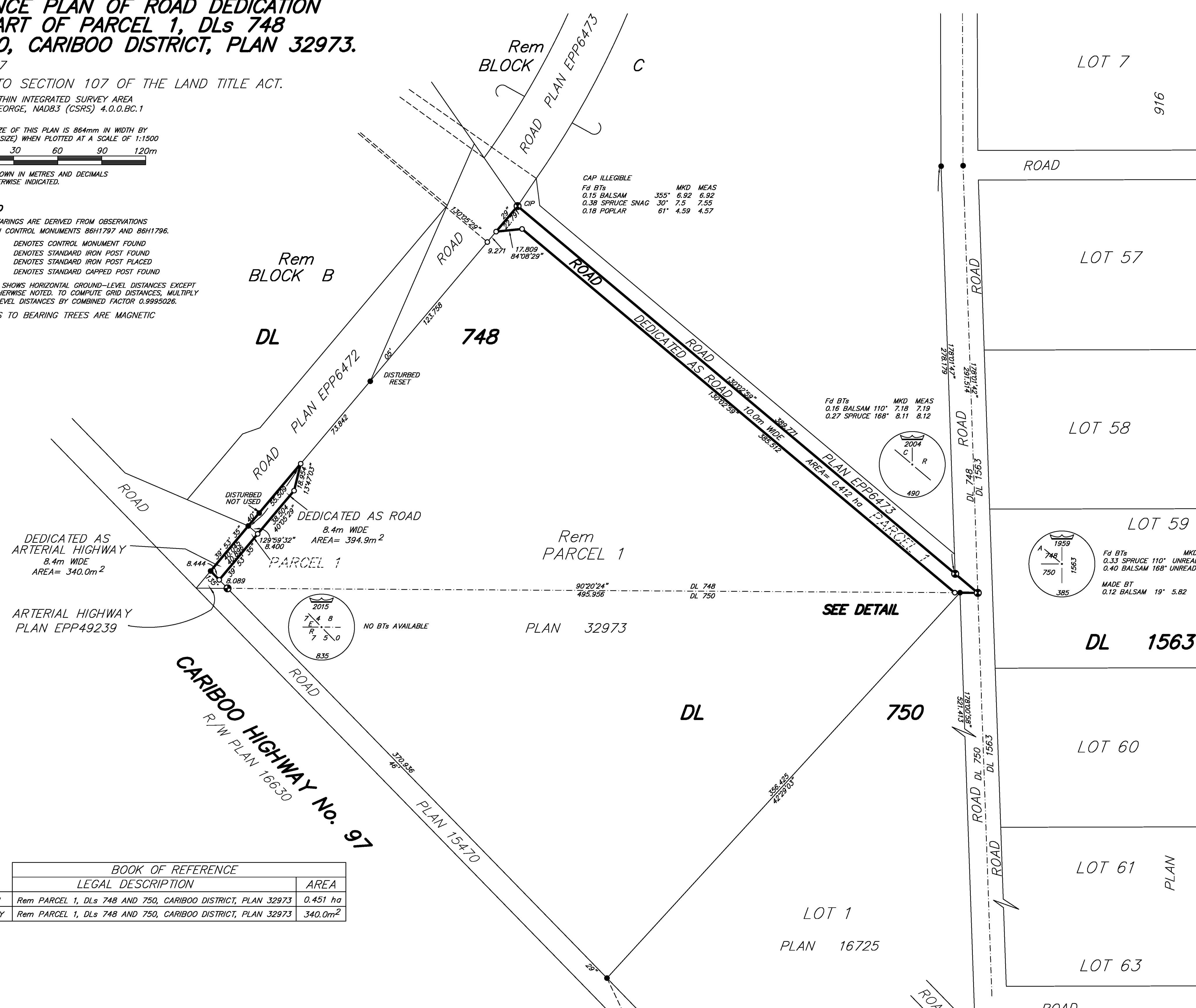
Fd BTs

MKD	MEAS
0.16 BALSAM 110°	7.18 7.19
0.27 SPRUCE 168°	8.11 8.12

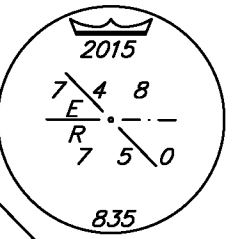
Fd BTs

MKD	MEAS
0.33 SPRUCE 110° UNREADABLE	2.33
0.40 BALSAM 168° UNREADABLE	12.77

MADE BT
0.12 BALSAM 19° 5.82



DEDICATED AS ARTERIAL HIGHWAY
8.4m WIDE
AREA= 340.0m²



NO BTs AVAILABLE

BOOK OF REFERENCE		AREA
ROAD DEDICATION	LEGAL DESCRIPTION	
ROAD DEDICATION	Rem PARCEL 1, DLs 748 AND 750, CARIBOO DISTRICT, PLAN 32973	0.451 ha
ARTERIAL HIGHWAY	Rem PARCEL 1, DLs 748 AND 750, CARIBOO DISTRICT, PLAN 32973	340.0m ²

86H1796
UTM ZONE 10
DATUM.....NAD83(CSRS) 4.0.0.BC.1
UTM NORTHING.....5968782.430
UTM EASTING.....518796.172
COMBINED SCALE FACTOR 0.9995024
ESTIMATED HORIZONTAL ACCURACY IS 0.05 METRES.

86H1797
UTM ZONE 10
DATUM.....NAD83(CSRS) 4.0.0.BC.1
UTM NORTHING.....5968782.451
UTM EASTING.....519328.856
COMBINED SCALE FACTOR 0.9995025
ESTIMATED HORIZONTAL ACCURACY IS 0.05 METRES.

PART OF THIS PLAN DEDICATES ARTERIAL HIGHWAY AS AUTHORIZED BY THE MINISTRY OF TRANSPORTATION AND INFRASTRUCTURE.
THIS PLAN LIES WITHIN THE JURISDICTION OF THE APPROVING OFFICER FOR THE MINISTRY OF TRANSPORTATION AND INFRASTRUCTURE.
THIS PLAN LIES WITHIN THE JURISDICTION OF THE APPROVING OFFICER FOR THE CITY OF PRINCE GEORGE.

THE FIELD SURVEY REPRESENTED BY THIS PLAN
WAS COMPLETED ON THE 26th DAY OF JANUARY, 2015.
DAVID E. STORBACK, BCLS (#B35), CLS

THIS PLAN LIES WITHIN THE REGIONAL DISTRICT OF FRASER - FORT GEORGE.

McElhanney
McElhanney Associates
Land Surveying Ltd.
Prince George, B.C.
E-mail: pgmals@mcelhanney.com
Ph: (250) 561-2229