

**SUBDIVISION PLAN OF PART OF LOT 1,
DISTRICT LOT 4376, CARIBOO DISTRICT,
PLAN 14517 EXCEPT PLANS 20750 AND
22568.**

PLAN EPP64576

PURSUANT TO SECTION 67 OF LAND TITLE ACT
INTEGRATED SURVEY AREA No. 39 PRINCE GEORGE, BC

BCGS 93G.097



THE INTENDED PLOT SIZE OF THIS PLAN IS 432 mm IN WIDTH BY 560 mm IN HEIGHT (C SIZE) WHEN PLOTTED AT A SCALE OF 1:1000.

ALL DISTANCES ARE IN METRES AND DECIMALS THEREOF.

GRID BEARINGS ARE DERIVED FROM GEODETIC CONTROL MONUMENTS 86H1841 AND 85H1161.

THIS PLAN SHOWS HORIZONTAL GROUND-LEVEL DISTANCES UNLESS OTHERWISE SPECIFIED. TO COMPUTE GRID DISTANCES, MULTIPLY GROUND-LEVEL DISTANCES BY THE AVERAGE COMBINED FACTOR OF 0.9995111 WHICH HAS BEEN DERIVED FROM CONTROL MONUMENTS 86H1841 AND 85H1161.

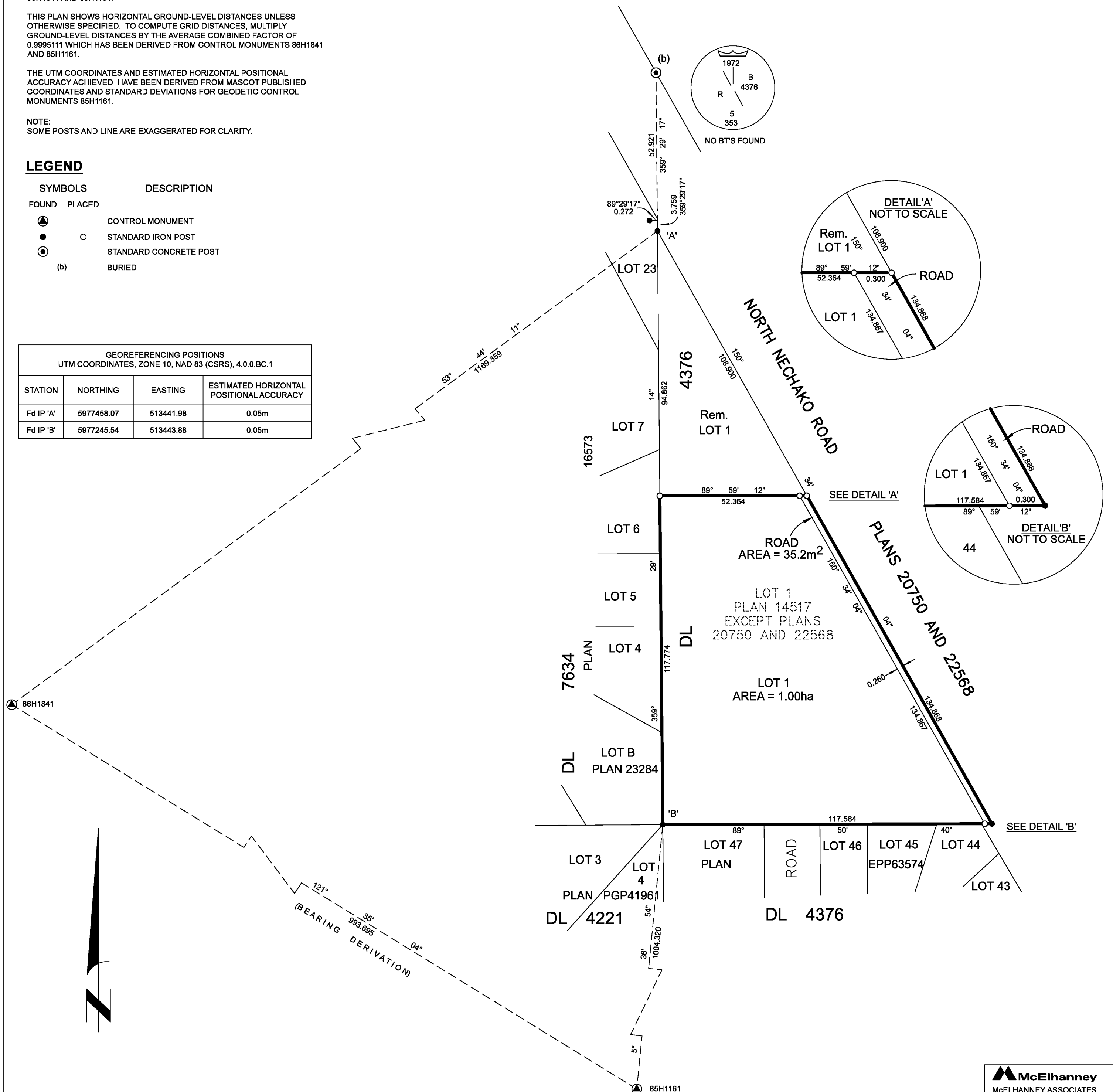
THE UTM COORDINATES AND ESTIMATED HORIZONTAL POSITIONAL ACCURACY ACHIEVED HAVE BEEN DERIVED FROM MASCOT PUBLISHED COORDINATES AND STANDARD DEVIATIONS FOR GEODETIC CONTROL MONUMENTS 85H1161.

NOTE:
SOME POSTS AND LINE ARE EXAGGERATED FOR CLARITY.

LEGEND

SYMBOLS		DESCRIPTION
FOUND	PLACED	
⊙	○	CONTROL MONUMENT
●	○	STANDARD IRON POST
⊙	○	STANDARD CONCRETE POST
(b)		BURIED

GEOREFERENCING POSITIONS UTM COORDINATES, ZONE 10, NAD 83 (GSR), 4.0.0.BC.1			
STATION	NORTHING	EASTING	ESTIMATED HORIZONTAL POSITIONAL ACCURACY
Fd IP 'A'	5977458.07	513441.98	0.05m
Fd IP 'B'	5977245.54	513443.88	0.05m



THIS PLAN LIES WITHIN THE JURISDICTION OF THE APPROVING OFFICER FOR THE CITY OF PRINCE GEORGE.
FILE: SD100517

THE FIELD SURVEY REPRESENTED BY THIS PLAN WAS COMPLETED ON THE 9TH DAY OF AUGUST, 2016
SHAUNA C. GOERTZEN, BCLS 798

THIS PLAN LIES WITHIN THE REGIONAL DISTRICT OF FRASER-FORT GEORGE

McElhanney
McELHANNEY ASSOCIATES
LAND SURVEYING LTD.
Suite 12
556 North Nechako Road
Prince George BC
Canada V2K 1A1
Tel 250 561 2229
File No. 2341-6462-S