

**EXPLANATORY PLAN OF EASEMENT OVER PART OF  
PARCEL A (BEING A CONSOLIDATION OF LOTS 7 AND 8,  
SEE CA5123058), BLOCK 133, DISTRICT LOT 343,  
CARIBOO DISTRICT, PLAN 1268.**

PURSUANT TO SECTION 99(1)(e) OF THE LAND TITLE ACT.  
FOR EASEMENT PURPOSES

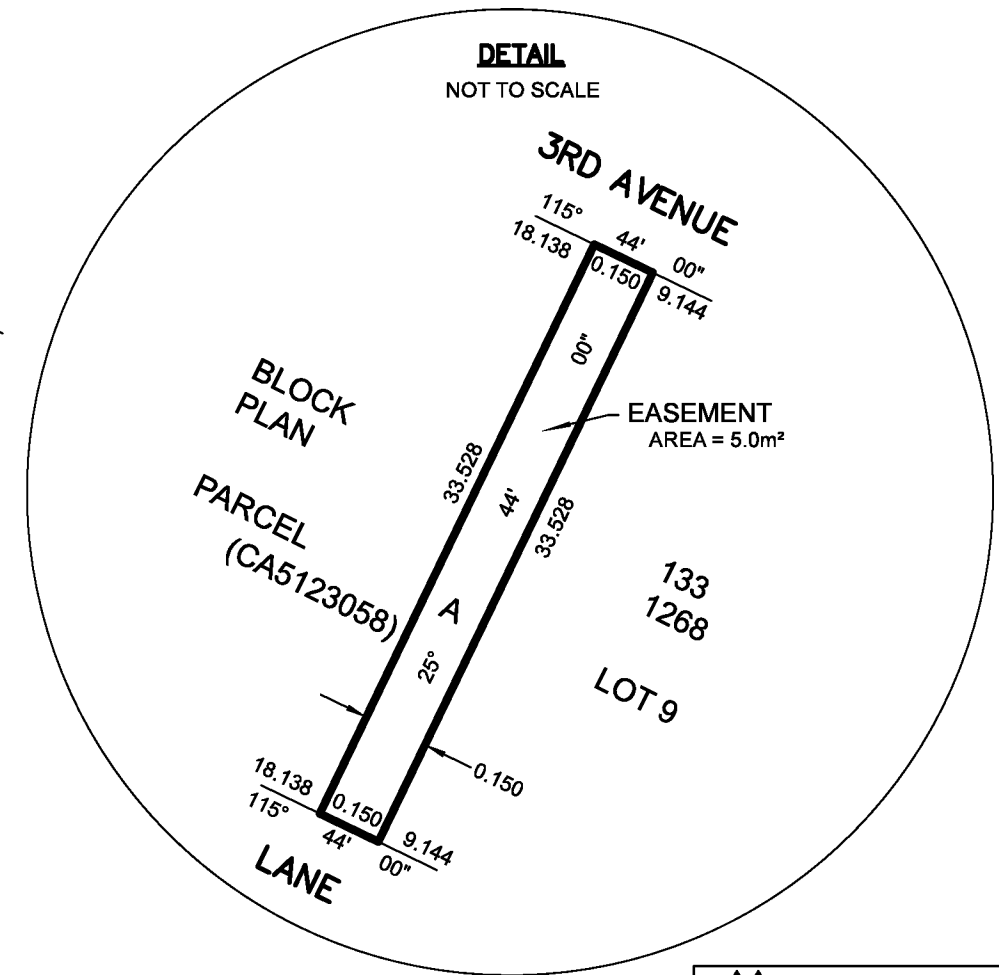
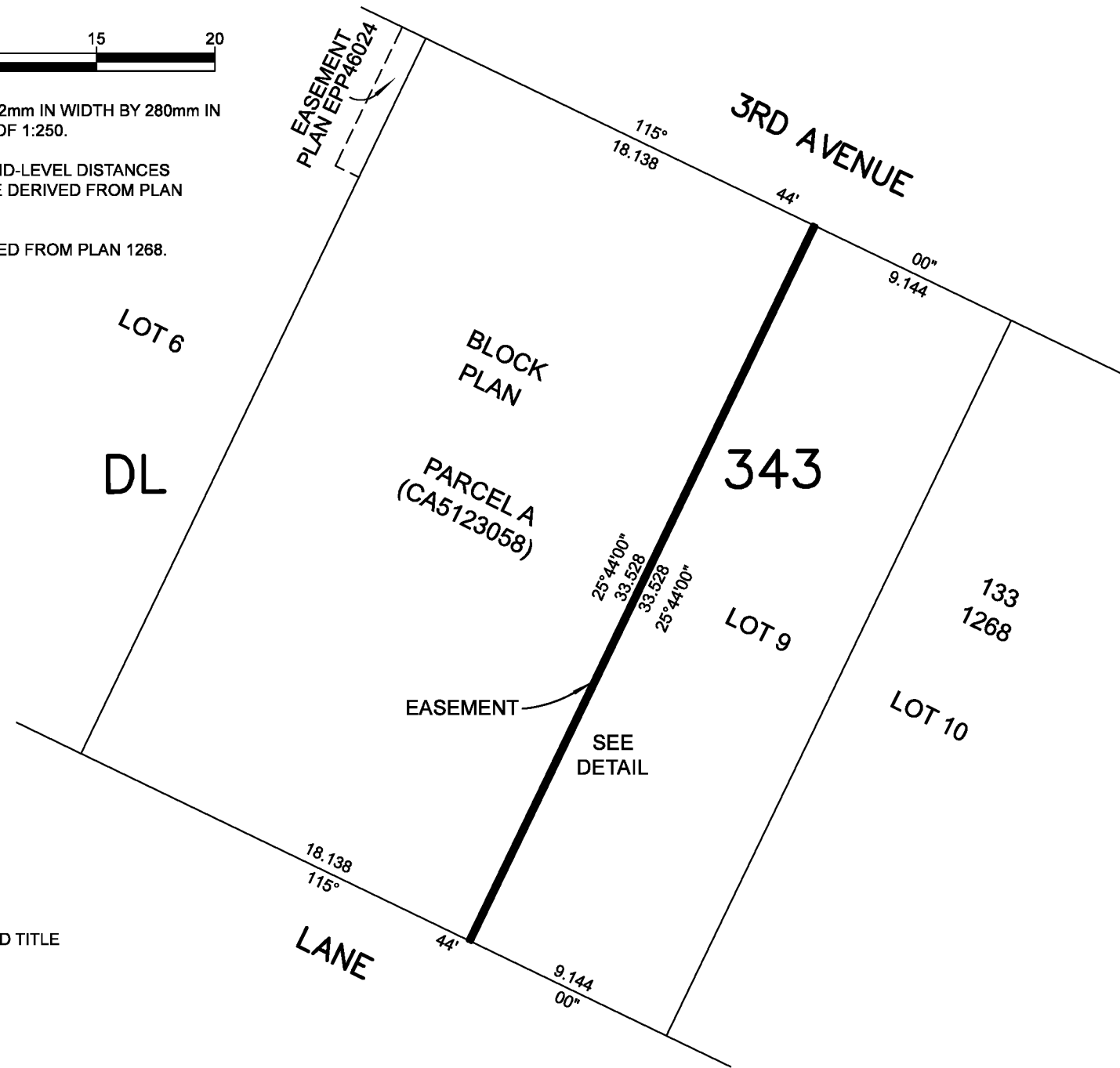
BCGS 93G.097



THE INTENDED PLOT SIZE OF THIS PLAN IS 432mm IN WIDTH BY 280mm IN HEIGHT (B SIZE) WHEN PLOTTED AT A SCALE OF 1:250.

DISTANCES SHOWN ARE HORIZONTAL GROUND-LEVEL DISTANCES IN METRES AND DECIMALS THEREOF AND ARE DERIVED FROM PLAN 1268.

BEARINGS ARE ASTRONOMIC AND ARE DERIVED FROM PLAN 1268.



THIS PLAN IS BASED ON THE FOLLOWING LAND TITLE  
AND SURVEY AUTHORITY OF BC RECORDS:  
PLAN 1268

DARREN KENT, BCLS 904  
26TH DAY OF AUGUST, 2016.

THIS PLAN LIES WITHIN THE REGIONAL DISTRICT OF FRASER-FORT GEORGE

**McElhanney**  
McELHANNEY ASSOCIATES  
LAND SURVEYING LTD.  
Suite 12  
556 North Nechako Road  
Prince George BC  
Canada V2K 1A1  
Tel 250 561 2229

File No. 2341-6478-E