

SUBDIVISION PLAN OF LOT 41, DISTRICT LOT 2433, CARIBOO DISTRICT, PLAN 15556, EXCEPT PLAN 30220

PLAN EPP64503

PURSUANT TO SECTION 67 OF LAND TITLE ACT

INTEGRATED SURVEY AREA No. 39 PRINCE GEORGE, BC

BCGS 93J.007



THE INTENDED PLOT SIZE OF THIS PLAN IS 560 mm IN WIDTH BY 432 mm IN HEIGHT (C SIZE) WHEN PLOTTED AT A SCALE OF 1:1250.

ALL DISTANCES ARE IN METRES AND DECIMALS THEREOF.

GRID BEARINGS ARE DERIVED FROM OBSERVATIONS BETWEEN GEODETIC CONTROL MONUMENTS 86H1804 AND 86H1803

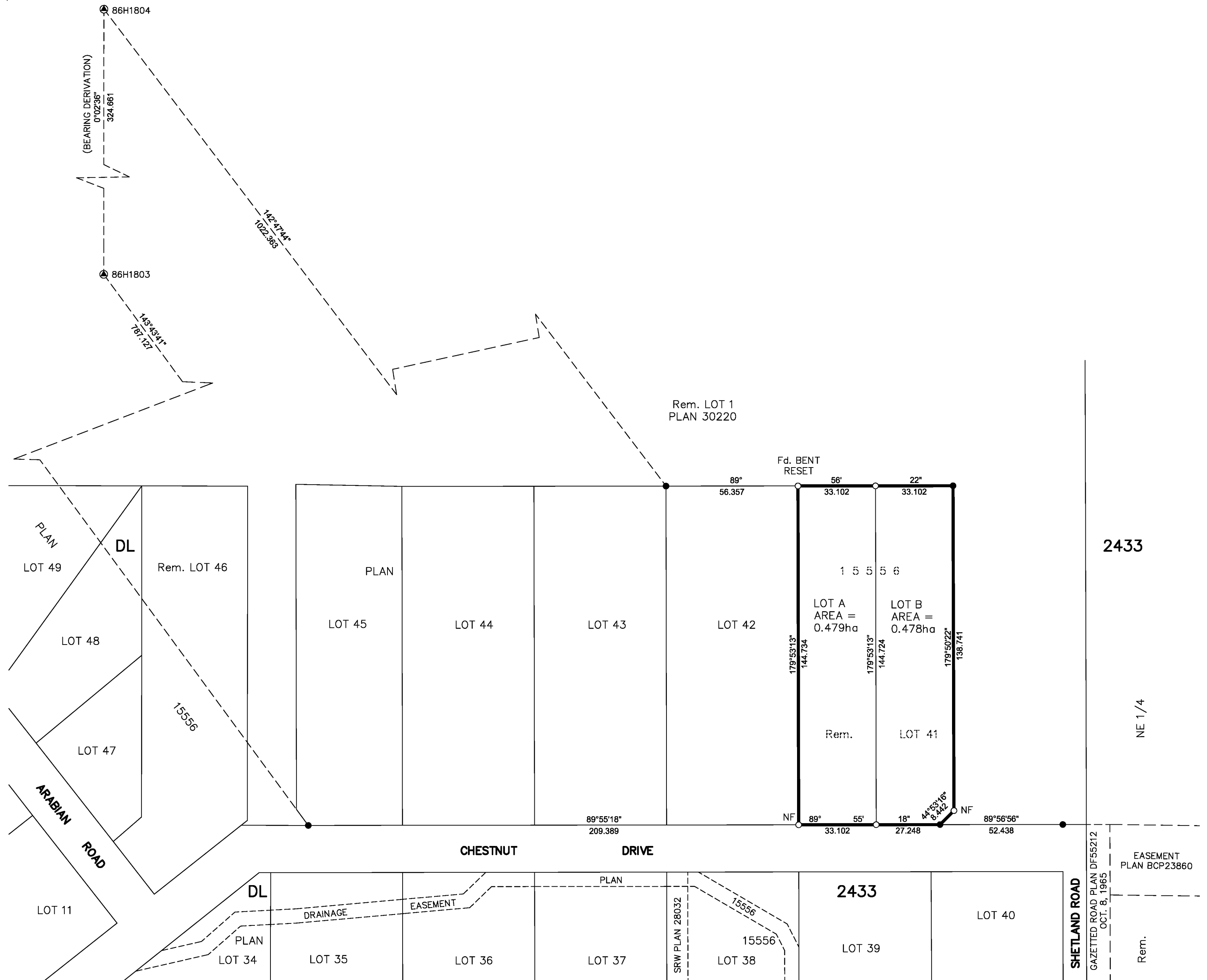
THE UTM COORDINATES AND ESTIMATED HORIZONTAL POSITIONAL ACCURACY ACHIEVED HAVE BEEN DERIVED FROM MASCOT PUBLISHED COORDINATES AND STANDARD DEVIATIONS FOR GEODETIC CONTROL MONUMENTS 86H1804 AND 86H1803

THIS PLAN SHOWS HORIZONTAL GROUND-LEVEL DISTANCES UNLESS OTHERWISE SPECIFIED. TO COMPUTE GRID DISTANCES, MULTIPLY GROUND-LEVEL DISTANCES BY THE AVERAGE COMBINED FACTOR OF 0.9994862 WHICH HAS BEEN DERIVED FROM CONTROL MONUMENTS 86H1804 AND 86H1803

LEGEND

SYMBOLS		DESCRIPTION
FOUND	PLACED	
⊙	●	CONTROL MONUMENT
○	○	STANDARD IRON POST

GEOREFERENCING POSITIONS UTM COORDINATES, ZONE 10, NAD 83 (CSRS), 4.0.0.BC.1			
STATION	NORTHING	EASTING	ESTIMATED HORIZONTAL POSITIONAL ACCURACY
86H1804	5985042.82	513039.37	0.05
86H1803	5984718.32	513039.12	0.05



THIS PLAN LIES WITHIN THE JURISDICTION OF THE APPROVING OFFICER FOR THE CITY OF PRINCE GEORGE. CPG FILE No.: SD100490

THE FIELD SURVEY REPRESENTED BY THIS PLAN WAS COMPLETED ON THE 16TH DAY OF JUNE, 2016 DARREN KENT, BCLS 904

THIS PLAN LIES WITHIN THE REGIONAL DISTRICT OF FRASER-FORT GEORGE

McElhanney
 McELHANNEY ASSOCIATES
 LAND SURVEYING LTD.
 Suite 12
 556 North Nechako Road
 Prince George BC
 Canada V2K 1A1
 Tel 250 561 2229

File No. 2341-6452-S
 CPG FILE No.: SD100490