

SUBDIVISION PLAN

Of Part of the North 1/2 of
District Lot 7862 Cariboo District

Pursuant to Section 67 of the Land Title Act.

BCGS 93G.096



The intended plot size of this plan is 864mm in width by 560mm in height (D size) when plotted at a scale of 1:2000.

LEGEND:

The UTM coordinates and estimated horizontal positional accuracy achieved are derived from 6 hours of GNSS dual frequency observations processed using the Precise Point Positioning (PPP) service provided by Natural Resources Canada.

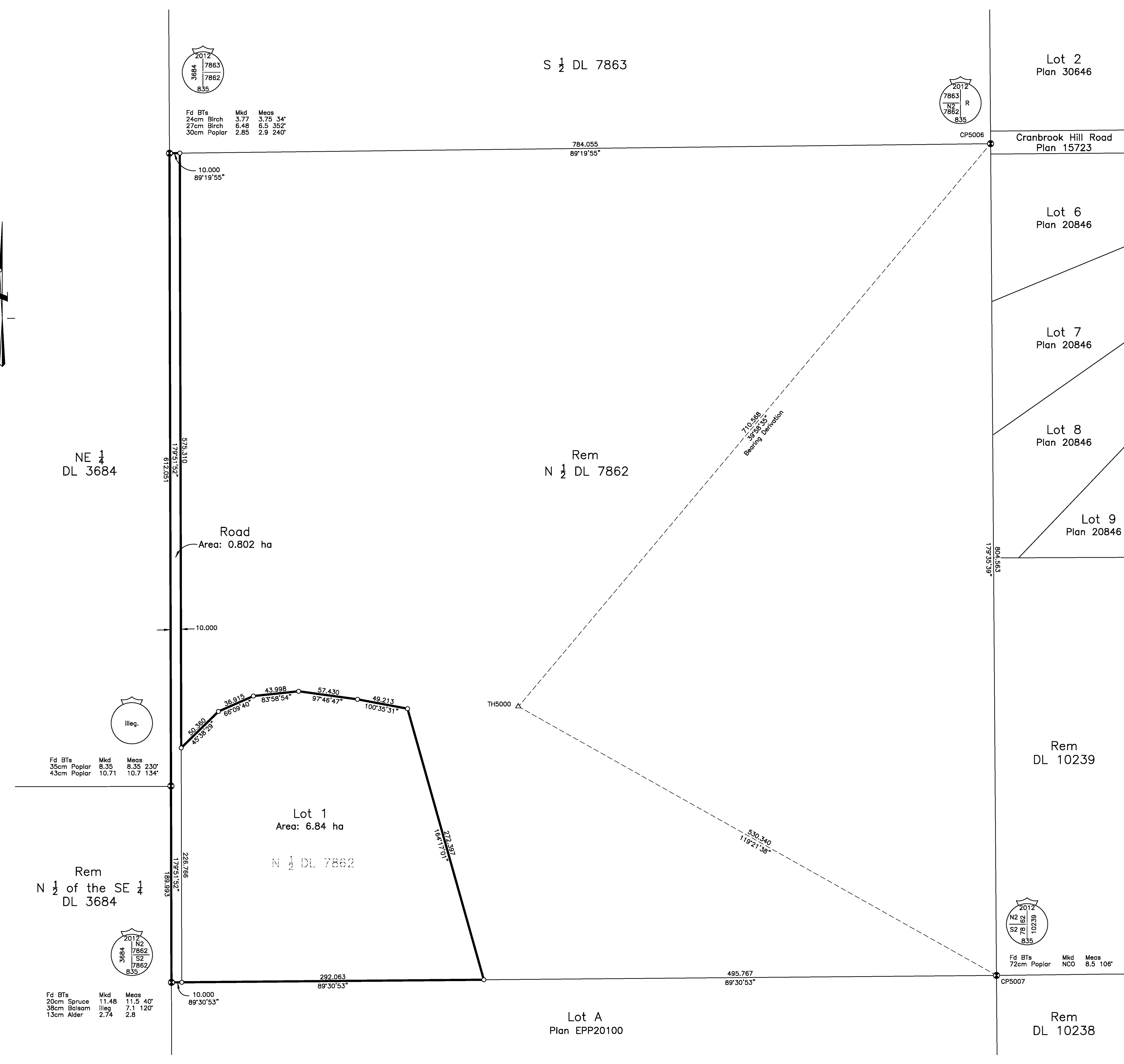
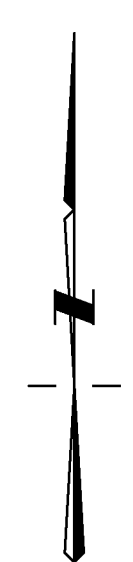
This plan shows horizontal ground-level distances unless otherwise specified. To compute grid distances, multiply ground-level distances by the average combined factor of 0.999479. The average combined factor has been determined based on an ellipsoidal elevation of 780 metres.

Grid bearings are derived from differential carrier phase GNSS observations and are referred to the central meridian of UTM Zone 10 North. To obtain local astronomic bearings referred to the meridian through TH5000, add 0°06'47".

Bearings to bearing trees are magnetic.

- Denotes standard iron post placed
- Denotes standard capped post found
- △ Denotes traverse hub placed
- CSF Denotes 'combined scale factor'
- EHPA Denotes 'estimated horizontal positional accuracy'

UTM Coordinates				
NAD 83 (CSRS) (2002.0), Zone 10				
Station	Northing	Easting	CSF	EHPA
TH5000	5976250.30	509183.43	0.999479	0.03
CP5006	5976794.53	509639.71	0.999485	0.03
CP5007	5975990.41	509645.40	0.999482	0.03



This plan lies within the jurisdiction of the Approving Officer for the City of Prince George, File No. SD100516.

HBH LAND SURVEYING INC.
3750 1st Avenue, PO Box 536
Smithers, BC V0J 2N0
Phone & Fax: 250.847.3808
BCLS@HBHLandSurveying.ca

HBH File No. DAH1601

This subdivision lies within the Agricultural Land Reserve. This plan lies within the City of Prince George. This plan lies within the Regional District of Fraser - Fort George.

The field survey represented by this plan was completed on the 6th day of July, 2016.
Mark Rossmann, BCLS 926