

# REFERENCE PLAN OF EASEMENT OVER PART OF LOTS 1 THROUGH 5 INCLUSIVE, PLAN EPP64032 AND PART OF LOT A, PLAN 15995, EXCEPT PLAN EPP64032, DISTRICT LOT 2424, CARIBOO DISTRICT.

PLAN EPP64157

PURSUANT TO SECTION 99(1)(e) OF THE LAND TITLE ACT.  
FOR EASEMENT PURPOSES

INTEGRATED SURVEY AREA No. 39 PRINCE GEORGE, BC  
BCGS 093J.006



THE INTENDED PLOT SIZE OF THIS PLAN IS 560 mm IN WIDTH BY 432 mm IN HEIGHT (C SIZE) WHEN PLOTTED AT A SCALE OF 1:500.

ALL DISTANCES ARE IN METRES AND DECIMALS THEREOF.

GRID BEARINGS ARE DERIVED FROM PREVIOUSLY INTEGRATED PLAN EPP64032.

THIS PLAN SHOWS HORIZONTAL GROUND-LEVEL DISTANCES UNLESS OTHERWISE SPECIFIED. TO COMPUTE GRID DISTANCES, MULTIPLY GROUND-LEVEL DISTANCES BY THE AVERAGE COMBINED FACTOR OF 0.9994864 WHICH HAS BEEN DERIVED FROM GEODETIC CONTROL MONUMENTS 86H1803 AND 86H1704.

THE UTM COORDINATES AND ESTIMATED HORIZONTAL POSITIONAL ACCURACY ACHIEVED HAVE BEEN DERIVED FROM MASCOT PUBLISHED COORDINATES AND STANDARD DEVIATIONS FOR GEODETIC CONTROL MONUMENT 86H1704.

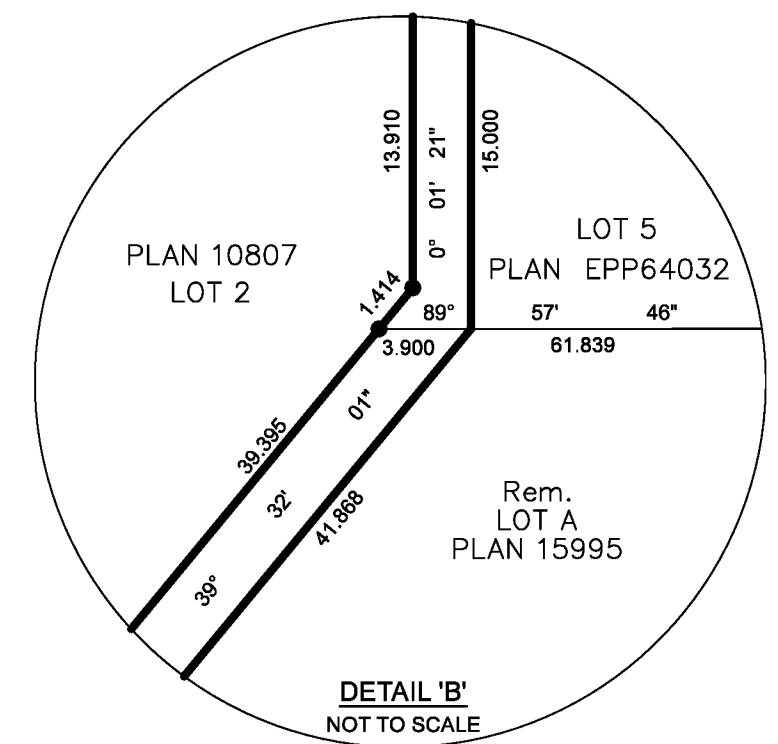
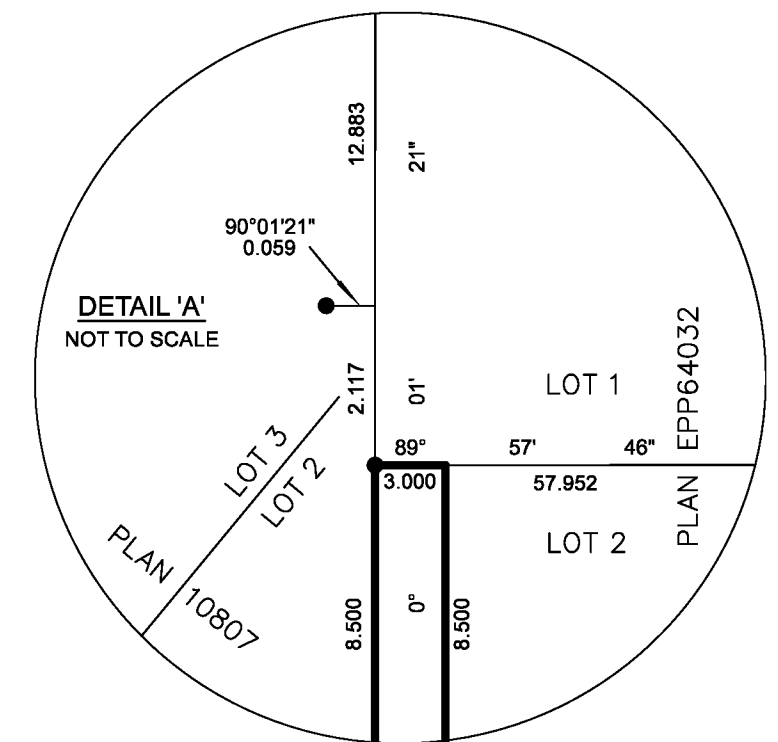
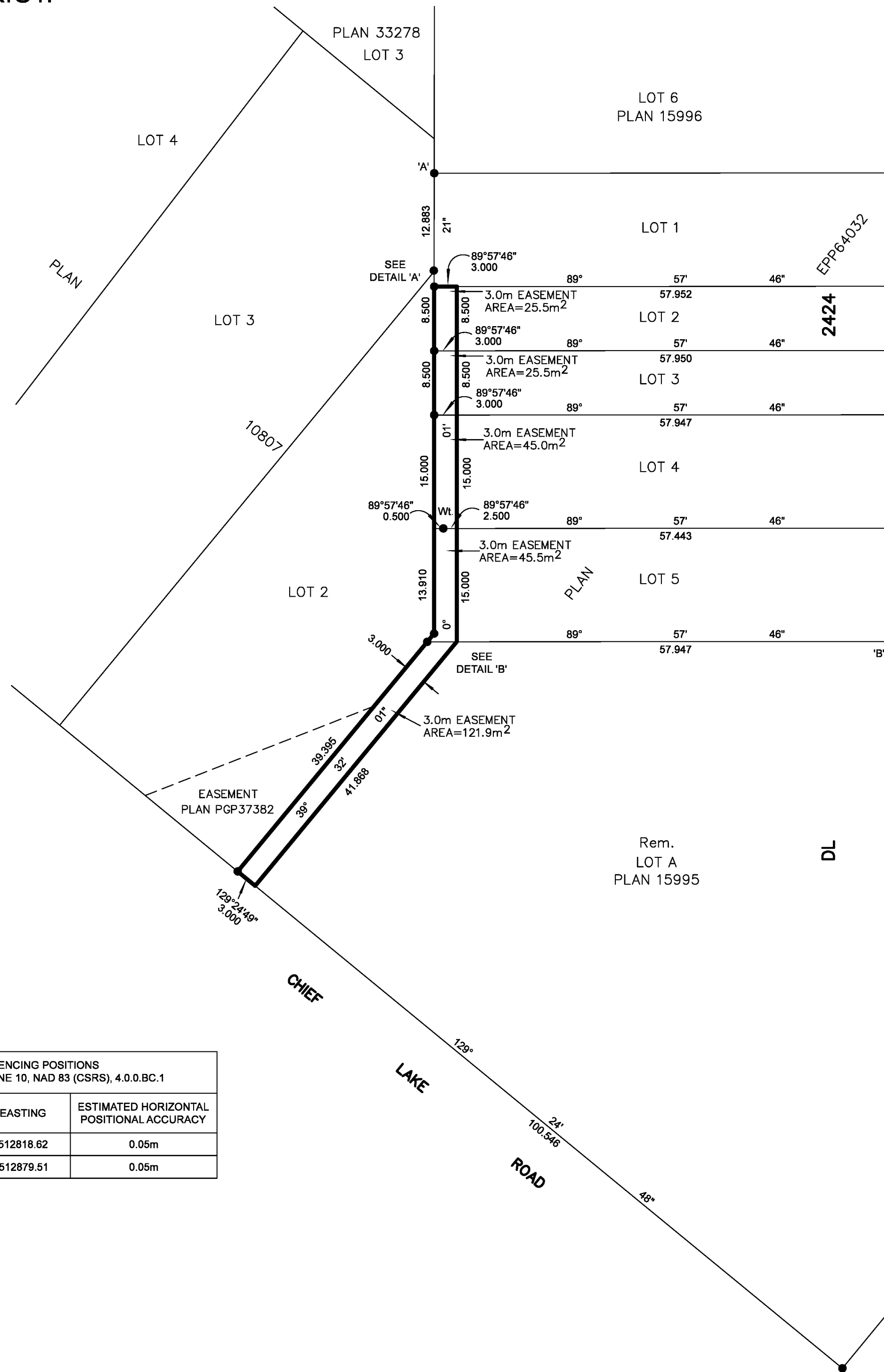
NOTE:  
THIS PLAN SHOWS ONE OR MORE WITNESS POSTS WHICH ARE NOT SET ON THE TRUE CORNER(S).  
SOME POSTS ARE EXAGGERATED FOR CLARITY.

### LEGEND

SYMBOLS	DESCRIPTION
FOUND PLACED	
●	STANDARD IRON POST

BOOK OF REFERENCE	
DESCRIPTION	AREA
Lot 2, Plan EPP64032	25.5m <sup>2</sup>
Lot 3, Plan EPP64032	25.5m <sup>2</sup>
Lot 4, Plan EPP64032	45.0m <sup>2</sup>
Lot 5, Plan EPP64032	45.5m <sup>2</sup>
Rem.Lot A, Plan 15995	121.9m <sup>2</sup>

GEOREFERENCING POSITIONS UTM COORDINATES, ZONE 10, NAD 83 (CSRS), 4.0.0.BC.1			
STATION	NORTHING	EASTING	ESTIMATED HORIZONTAL POSITIONAL ACCURACY
Fd.I.P.A'	5984232.27	512818.62	0.05m
Fd.I.P.B'	5984170.34	512879.51	0.05m



THE FIELD SURVEY REPRESENTED BY THIS PLAN WAS COMPLETED ON THE 8TH DAY OF JULY, 2016  
SHAUNA C. GOERTZEN, BCLS 798

THIS PLAN LIES WITHIN THE REGIONAL DISTRICT OF FRASER-FORT GEORGE

**McElhanney**  
McELHANNEY ASSOCIATES  
LAND SURVEYING LTD.  
Suite 12  
556 North Nechako Road  
Prince George BC  
Canada V2K 1A1  
Tel 250 561 2229

File No. 2341-6464-E