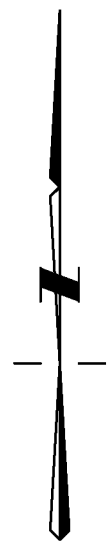
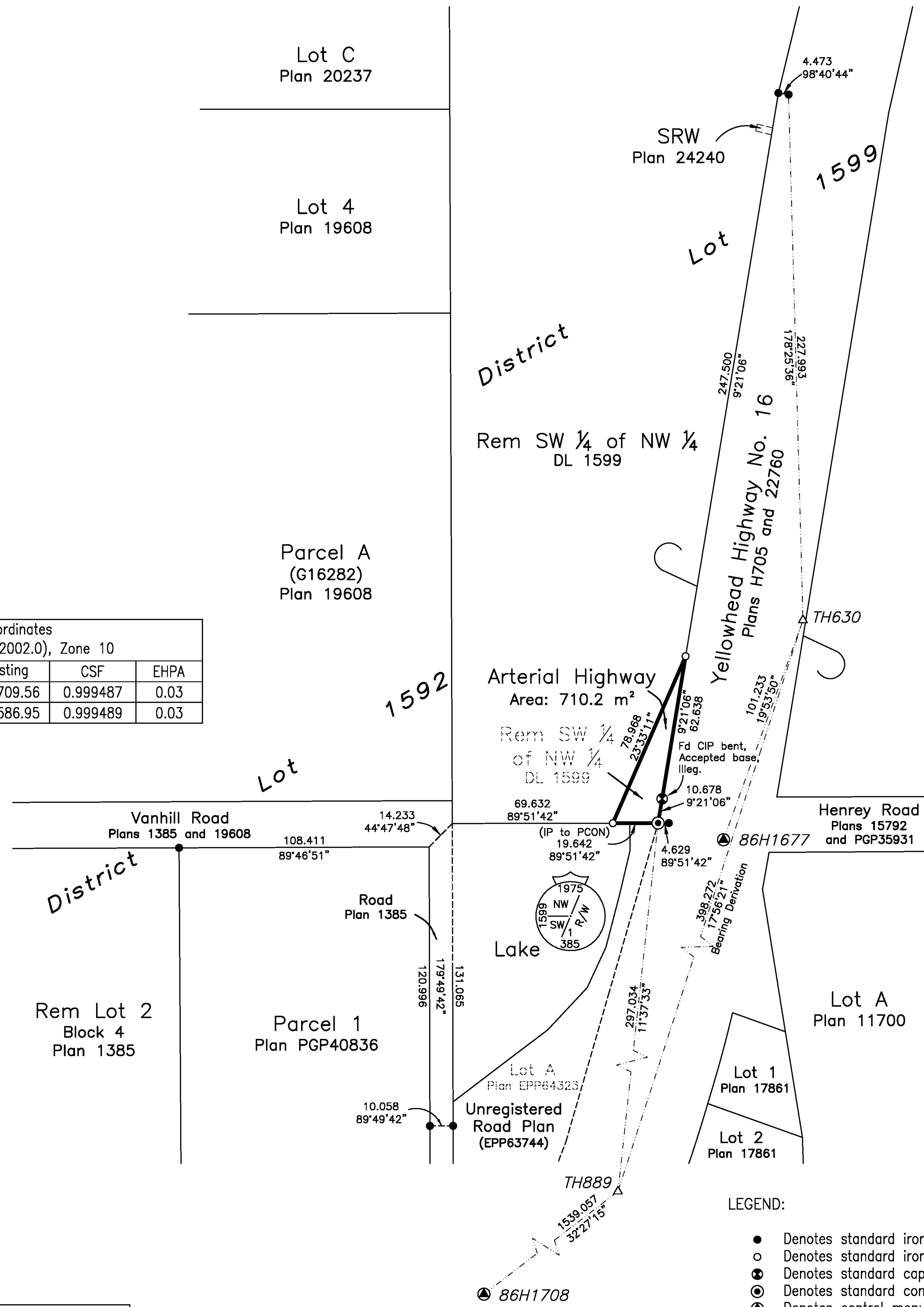


PLAN EPP64091



UTM Coordinates NAD 83 (CSRS) (2002.0), Zone 10				
Station	Northing	Easting	CSF	EHPA
TH630	5967176.98	511709.56	0.999487	0.03
TH889	5966798.27	511586.95	0.999489	0.03

REFERENCE PLAN

Of Part of the South West ¼ of the North West ¼ of District Lot 1599 Cariboo District Except Plans H705 22760 and PGP35931

Pursuant to Section 107 of the Land Title Act.

BCGS 93G.086

SCALE:



The intended plot size of this plan is 560mm in width by 432mm in height (C size) when plotted at a scale of 1:1500

BOOK OF REFERENCE:

Description	Area - Arterial Highway
SW ¼ of the NW ¼ DL 1599	710.2 m <sup>2</sup>

Integrated Survey Area No. 39, Prince George, NAD 83 (CSRS) (2002.0)

The UTM coordinates and estimated horizontal positional accuracy achieved are derived from 7 hours of GNSS dual frequency observations processed using the Precise Point Positioning (PPP) service provided by Natural Resources Canada.

This plan shows horizontal ground-level distances unless otherwise specified. To compute grid distances, multiply ground-level distances by the average combined factor of 0.999481. The average combined factor has been determined based on an ellipsoidal elevation of 769 metres.

Grid bearings are derived from differential carrier phase GNSS observations and are referred to the central meridian of UTM Zone 10 North. To obtain local astronomic bearings referred to the meridian through TH889, add 0°08'32".

LEGEND:

- Denotes standard iron post found
- Denotes standard iron post placed
- ⊙ Denotes standard capped post found
- ⊕ Denotes standard concrete post found
- ▲ Denotes control monument found
- △ Denotes traverse hub placed
- CSF Denotes 'combined scale factor'
- EHPA Denotes 'estimated horizontal positional accuracy'

This plan dedicates arterial highway as authorized by the minister of transportation and infrastructure.

This plan lies within the City of Prince George. This plan lies within the Regional District of Fraser-Fort George.

The field survey represented by this plan was completed on the 8th day of July, 2016. Mark Rossmann, BCLS 926

**HBH** LAND SURVEYING INC.  
 3750 1st Avenue, PO Box 536  
 Smithers, BC V0J 2N0  
 Phone & Fax: 250.847.3808  
 BCLS@HBHLandSurveying.ca

HBH File No. MOT1602