

SUBDIVISION PLAN OF PART OF LOT A, DISTRICT LOT 2424, CARIBOO DISTRICT, PLAN 15995

PLAN EPP64032

PURSUANT TO SECTION 67 OF LAND TITLE ACT

INTEGRATED SURVEY AREA No. 39 PRINCE GEORGE, BC
BCGS 093J.006



THE INTENDED PLOT SIZE OF THIS PLAN IS 560 mm IN WIDTH BY 432 mm IN HEIGHT (C SIZE) WHEN PLOTTED AT A SCALE OF 1:750.

ALL DISTANCES ARE IN METRES AND DECIMALS THEREOF.

GRID BEARINGS ARE DERIVED FROM OBSERVATIONS BETWEEN GEODETIC CONTROL MONUMENTS 86H1803 AND 86H1704.

THIS PLAN SHOWS HORIZONTAL GROUND-LEVEL DISTANCES UNLESS OTHERWISE SPECIFIED. TO COMPUTE GRID DISTANCES, MULTIPLY GROUND-LEVEL DISTANCES BY THE AVERAGE COMBINED FACTOR OF 0.9994864 WHICH HAS BEEN DERIVED FROM GEODETIC CONTROL MONUMENTS 86H1803 AND 86H1704.

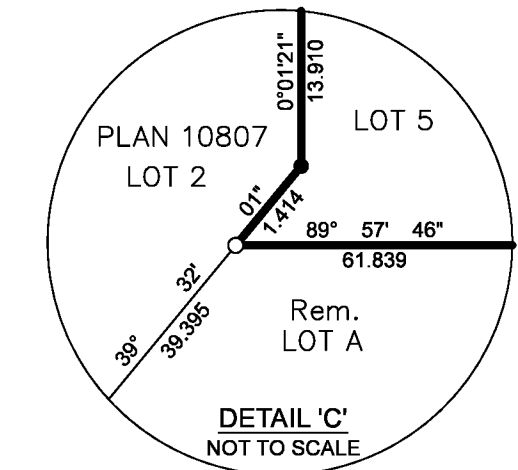
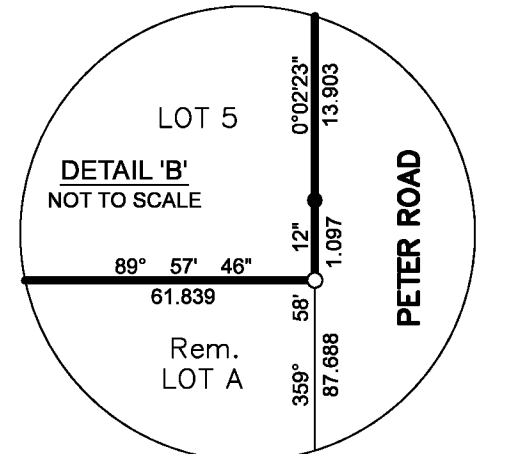
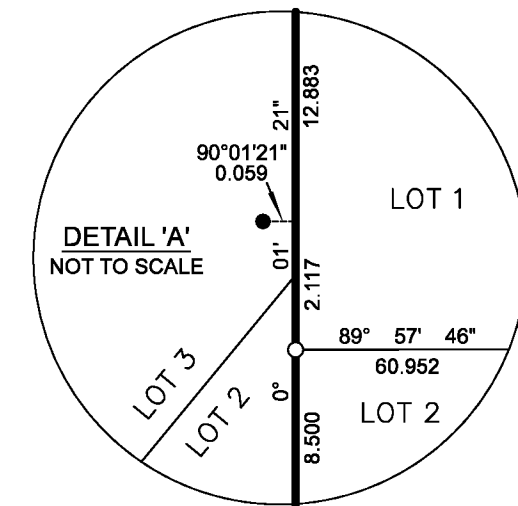
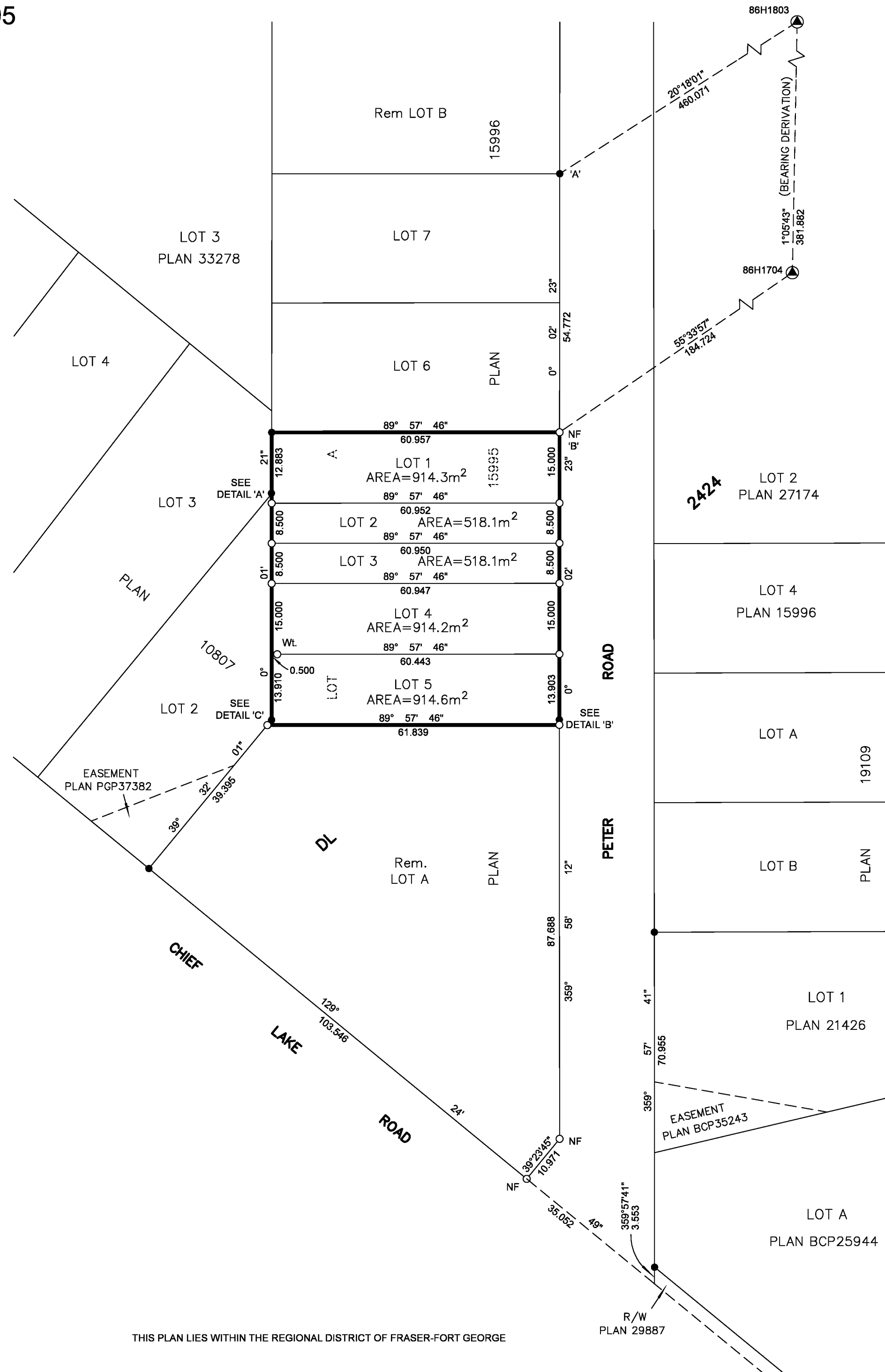
THE UTM COORDINATES AND ESTIMATED HORIZONTAL POSITIONAL ACCURACY ACHIEVED HAVE BEEN DERIVED FROM MASCOT PUBLISHED COORDINATES AND STANDARD DEVIATIONS FOR GEODETIC CONTROL MONUMENT 86H1704.

NOTE:
THIS PLAN SHOWS ONE OR MORE WITNESS POSTS WHICH ARE NOT SET ON THE TRUE CORNER(S).
SOME POSTS ARE EXAGGERATED FOR CLARITY.

LEGEND

SYMBOLS		DESCRIPTION
FOUND	PLACED	
		CONTROL MONUMENT
		STANDARD IRON POST

GEOREFERENCING POSITIONS UTM COORDINATES, ZONE 10, NAD 83 (CSRS), 4.0.0.BC.1			
STATION	NORTHING	EASTING	ESTIMATED HORIZONTAL POSITIONAL ACCURACY
Fd.IP'A'	5984287.05	512879.59	0.05m
Pl.IP'B'	5984232.31	512879.55	0.05m



THIS PLAN LIES WITHIN THE JURISDICTION OF THE APPROVING OFFICER FOR THE CITY OF PRINCE GEORGE.
CPG FILE: SD100492

THE FIELD SURVEY REPRESENTED BY THIS PLAN WAS COMPLETED ON THE 8TH DAY OF JULY, 2016
SHAUNA C. GOERTZEN, BCLS 798

THIS PLAN LIES WITHIN THE REGIONAL DISTRICT OF FRASER-FORT GEORGE

McElhanney
McELHANNEY ASSOCIATES
LAND SURVEYING LTD.
Suite 12
556 North Nechako Road
Prince George BC
Canada V2K 1A1
Tel 250 561 2229
File No. 2341-6464-S