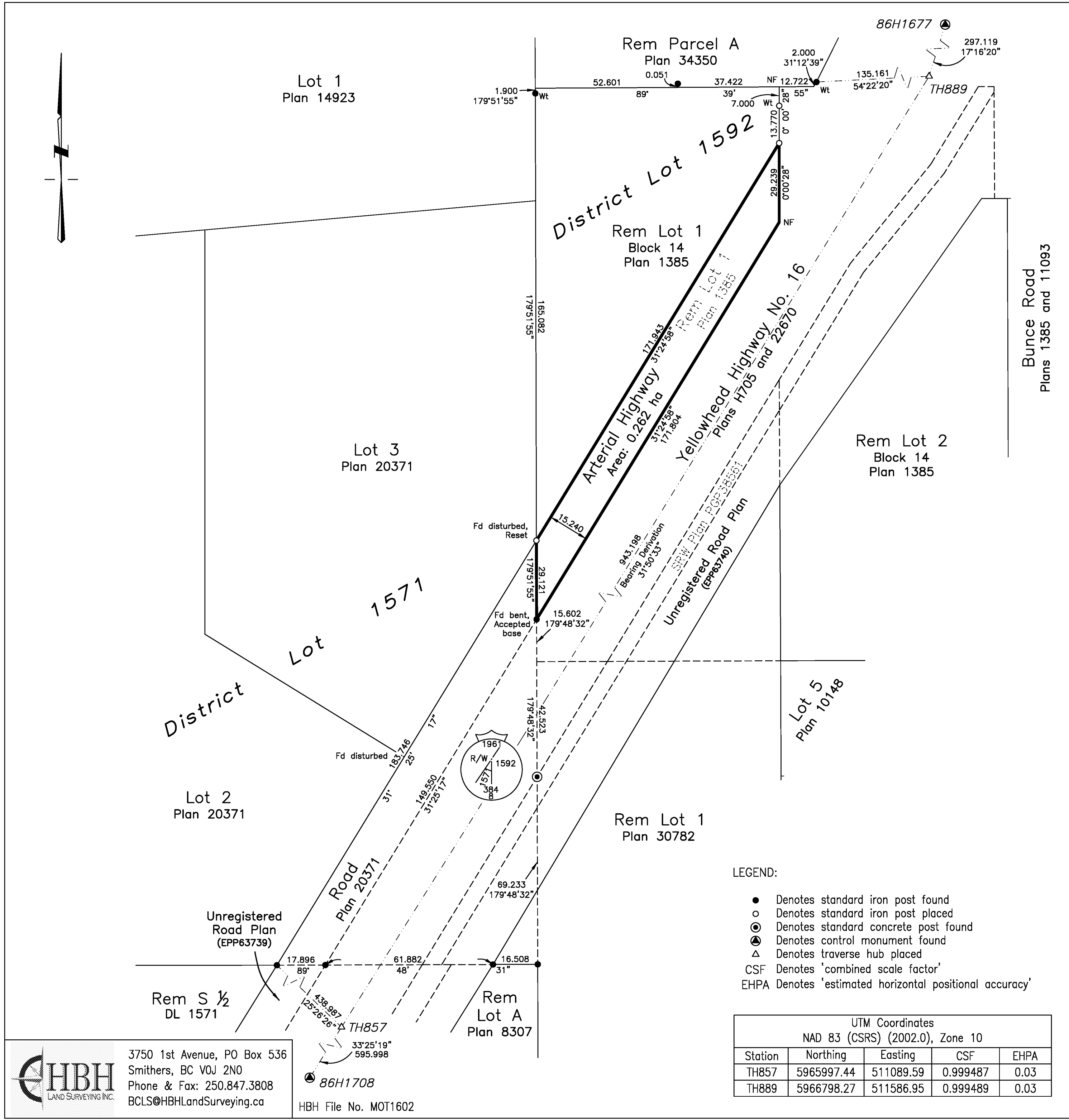


PLAN EPP63742



REFERENCE PLAN

Of Part of Lot 1 Block 14 District Lot 1592 Cariboo District Plan 1385 Except Plans 22760 and 30782

Pursuant to Section 107 of the Land Title Act.

BCGS 93G.086

SCALE:



The intended plot size of this plan is 560mm in width by 432mm in height (C size) when plotted at a scale of 1:1000

BOOK OF REFERENCE:

Description	Area - Arterial Highway
Rem Lot 1 Block 14 Plan 1385	0.262 ha

Integrated Survey Area No. 39, Prince George, NAD 83 (CSRS) (2002.0)

The UTM coordinates and estimated horizontal positional accuracy achieved are derived from 7 hours of GNSS dual frequency observations processed using the Precise Point Positioning (PPP) service provided by Natural Resources Canada.

This plan shows horizontal ground-level distances unless otherwise specified. To compute grid distances, multiply ground-level distances by the average combined factor of 0.999481. The average combined factor has been determined based on an ellipsoidal elevation of 769 metres.

Grid bearings are derived from differential carrier phase GNSS observations and are referred to the central meridian of UTM Zone 10 North. To obtain local astronomic bearings referred to the meridian through TH889, add 0°08'32".

Note:  
This plan shows one or more witness posts which are not set on the true corner(s).

This plan dedicates arterial highway as authorized by the minister of transportation and infrastructure.

This plan lies within the City of Prince George.  
This plan lies within the Agricultural Land Reserve.  
This plan lies within the Regional District of Fraser-Fort George.

The field survey represented by this plan was completed on the 8th day of July, 2016.  
Mark Rossmann, BCLS 926

LEGEND:

- Denotes standard iron post found
- Denotes standard iron post placed
- ⊙ Denotes standard concrete post found
- ▲ Denotes control monument found
- △ Denotes traverse hub placed
- CSF Denotes 'combined scale factor'
- EHPA Denotes 'estimated horizontal positional accuracy'

UTM Coordinates				
NAD 83 (CSRS) (2002.0), Zone 10				
Station	Northing	Easting	CSF	EHPA
TH857	5965997.44	511089.59	0.999487	0.03
TH889	5966798.27	511586.95	0.999489	0.03

**HBH** LAND SURVEYING INC.  
 3750 1st Avenue, PO Box 536  
 Smithers, BC V0J 2N0  
 Phone & Fax: 250.847.3808  
 BCLS@HBHLandSurveying.ca

HBH File No. MOT1602