

PLAN EPP63740

CORRECTED THIS 3RD DAY OF MARCH, 2017
 ✓ SEE CA 5840954

REFERENCE PLAN

Of Part of Lot A Plan 8307, Part of Lot 1 Plan 17480, Part of Lot A Plan 16744 Except Plans 17480 and 26234, all of District Lot 1571; and of Part of Lot 1 District Lots 1571 and 1592 Plan 30782; and of Part of Lot 2 Block 14 District Lot 1592 Plan 1385 Except Plan 22760; all of Cariboo District

Pursuant to Section 107 of the Land Title Act.

BCGS 93G.086



The intended plot size of this plan is 864mm in width by 560mm in height (D size) when plotted at a scale of 1:1500

BOOK OF REFERENCE:

Description	Area - Arterial Highway
Lot A Plan 8307	444.1 m ²
Lot 1 Plan 17460	619.0 m ²
Rem Lot A Plan 16744	942.5 m ²
Lot 1 Plan 30782	0.488 ha
Rem Lot 2 Block 14 Plan 1385	0.331 ha
Total:	1.02 ha

LEGEND:

Integrated Survey Area No. 39, Prince George, NAD 83 (CSRS) (2002.0)

The UTM coordinates and estimated horizontal positional accuracy achieved are derived from 7 hours of GNSS dual frequency observations processed using the Precise Point Positioning (PPP) service provided by Natural Resources Canada.

This plan shows horizontal ground-level distances unless otherwise specified. To compute grid distances, multiply ground-level distances by the average combined factor of 0.999481. The average combined factor has been determined based on an ellipsoidal elevation of 769 metres.

Grid bearings are derived from differential carrier phase GNSS observations and are referred to the central meridian of UTM Zone 10 North. To obtain local astronomic bearings referred to the meridian through TH889, add 0°08'32".

- Denotes standard iron post found
- Denotes standard iron post placed
- ⊙ Denotes standard capped post found
- ⊚ Denotes standard concrete post found
- ⊛ Denotes control monument found
- △ Denotes traverse hub placed
- CSF Denotes 'combined scale factor'
- EHPA Denotes 'estimated horizontal positional accuracy'

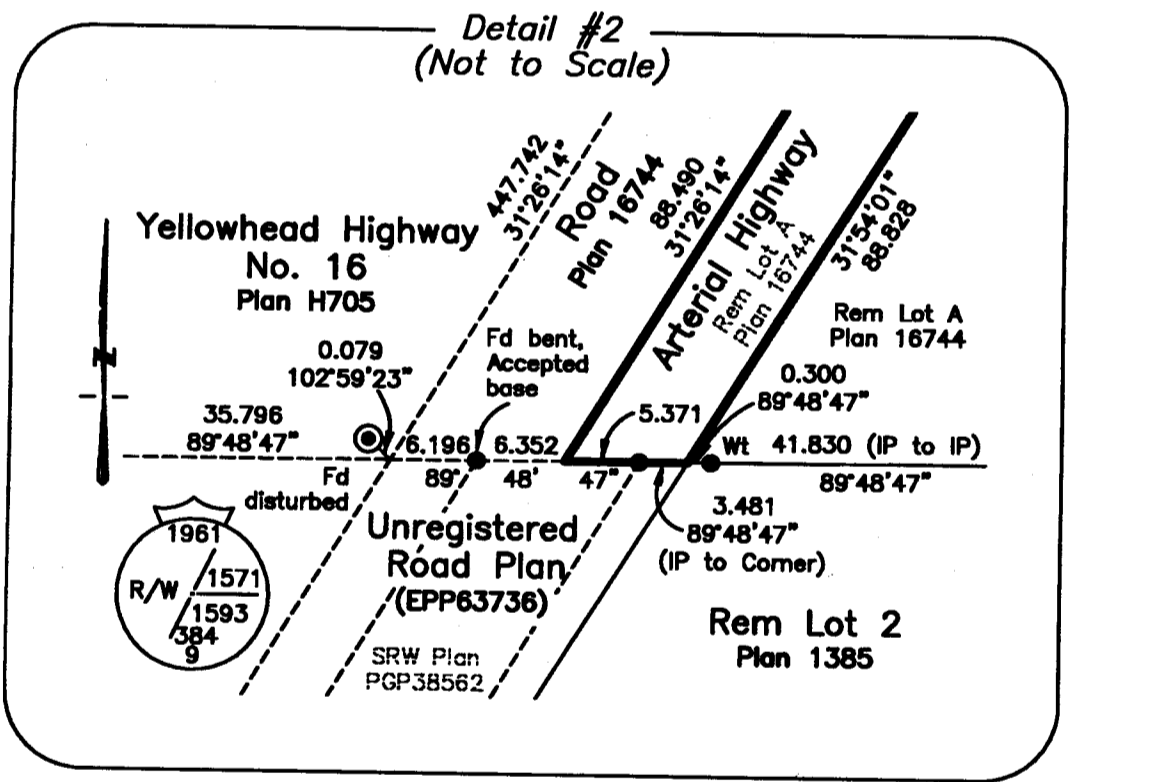
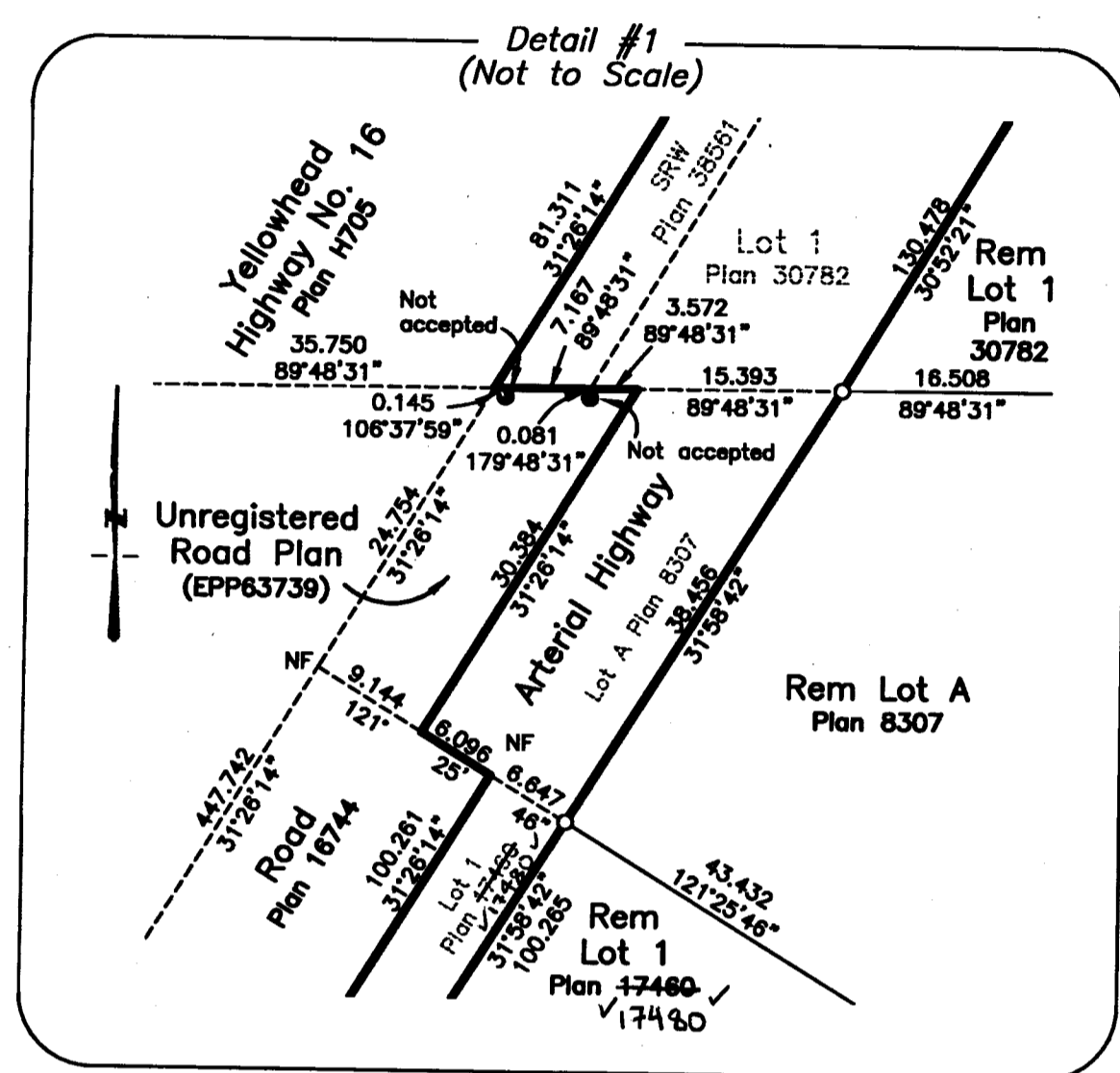
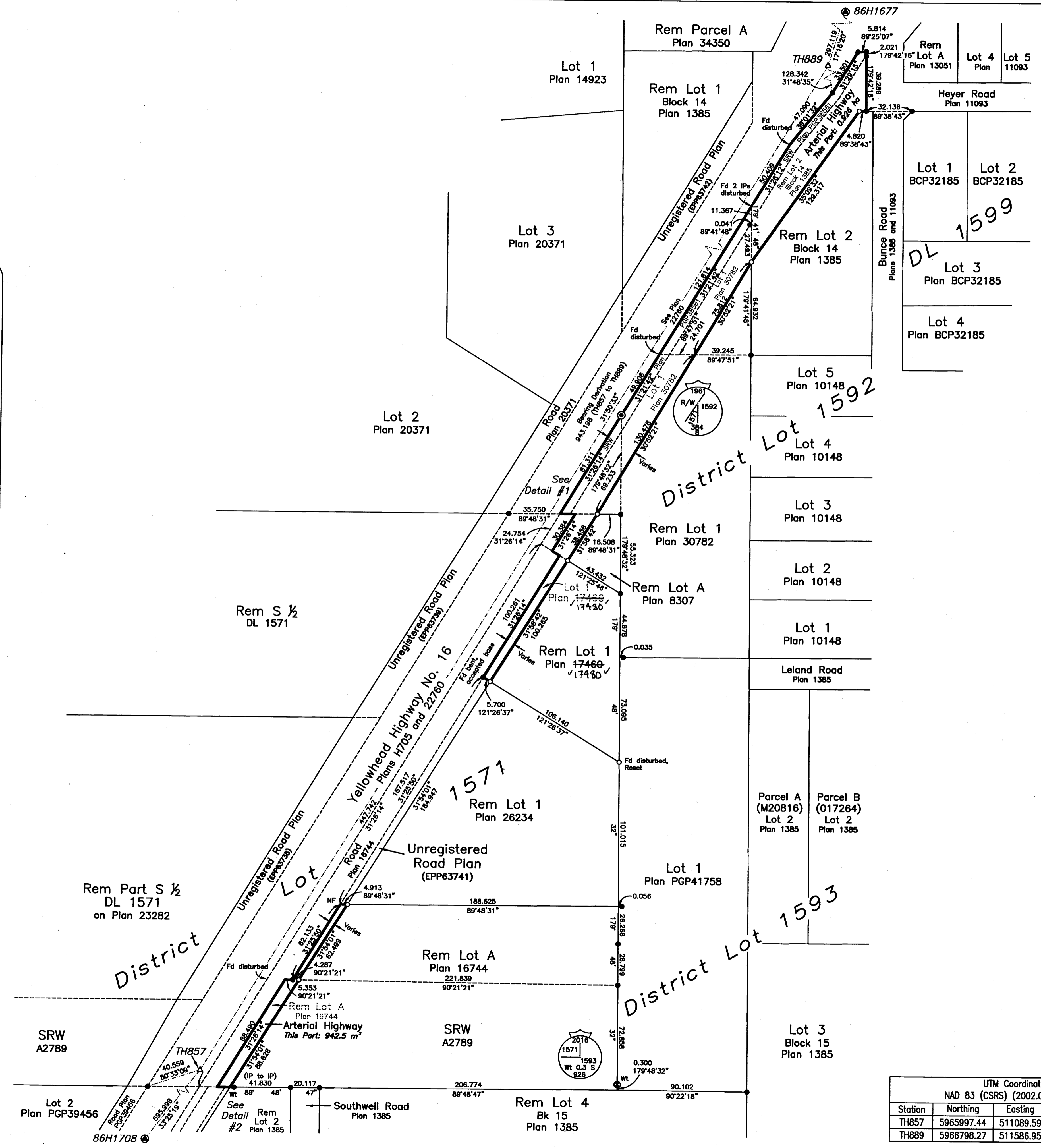
Note:
 This plan shows one or more witness posts which are not set on the true corner(s).

This plan dedicates arterial highway as authorized by the minister of transportation and infrastructure.

This plan lies within the City of Prince George. This plan lies within the Regional District of Fraser-Fort George.

The field survey represented by this plan was completed on the 8th day of July, 2016.
 Mark Rossmann, BCLS 926

Station	UTM Coordinates			
	NAD 83 (CSRS) (2002.0), Zone 10	Northing	Eastng	CSF
TH857	5965997.44	511089.59	0.999487	0.03
TH889	5966798.27	511586.95	0.999489	0.03



HBH LAND SURVEYING INC.
 3750 1st Avenue, PO Box 536
 Smithers, BC V0J 2N0
 Phone & Fax: 250.847.3808
 BCLS@HBHLandSurveying.ca

HBH File No. MOT1602