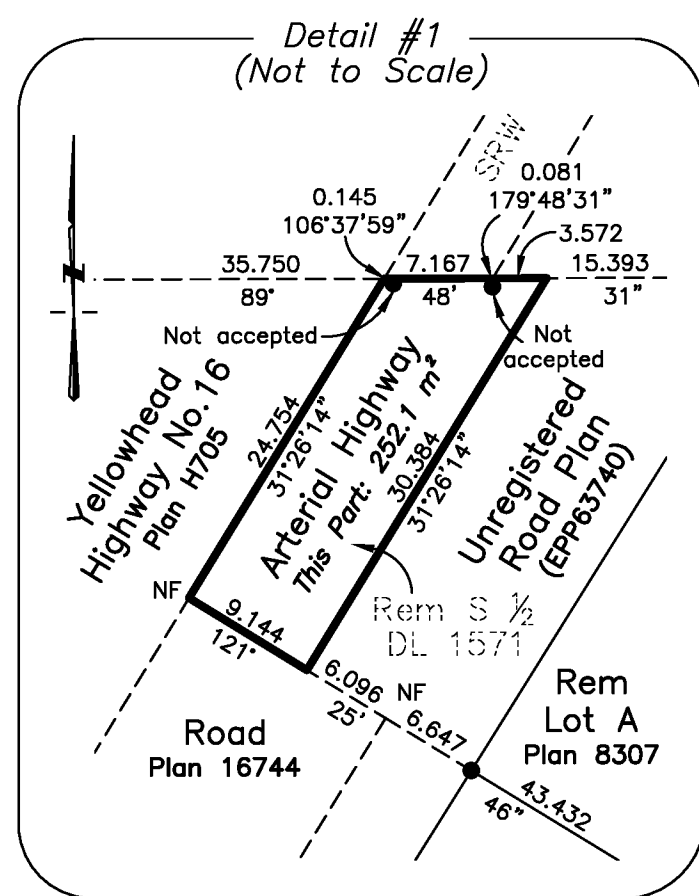


PLAN EPP63739



Lot 2
Plan 20371

Rem
Lot 1
Plan 30782

DL 1592

Rem South 1/2
DL 1571
District

Rem
Lot 1
Plan 17460

Rem
Lot 1
Plan 26234

Rem Part S 1/2
DL 1571
on Plan 23282

LEGEND:

- Denotes standard iron post found
- ⊙ Denotes control monument found
- △ Denotes traverse hub placed
- CSF Denotes 'combined scale factor'
- EHPA Denotes 'estimated horizontal positional accuracy'

UTM Coordinates NAD 83 (CSRS) (2002.0), Zone 10				
Station	Northing	Easting	CSF	EHPA
TH857	5965997.44	511089.59	0.999487	0.03
TH889	5966798.27	511586.95	0.999489	0.03

REFERENCE PLAN

Of Part of the South 1/2 of District Lot 1571
Cariboo District Except Plans 8307 16744
23282 and H705

Pursuant to Section 107 of the Land Title Act.

BCGS 93G.086

SCALE:



The intended plot size of this plan is 560mm in width by
432mm in height (C size) when plotted at a scale of 1:1000

BOOK OF REFERENCE:

Description	Area - Arterial Highway
Rem S 1/2 DL 1571 (W of Highway Plan H705)	0.265 ha
Rem S 1/2 DL 1571 (E of Highway Plan H705)	252.1 m ²
Total - Rem S 1/2 DL 1571	0.290 ha

Integrated Survey Area No. 39, Prince George, NAD 83
(CSRS) (2002.0)

The UTM coordinates and estimated horizontal positional
accuracy achieved are derived from 7 hours of GNSS dual
frequency observations processed using the Precise Point
Positioning (PPP) service provided by Natural Resources
Canada.

This plan shows horizontal ground-level distances unless
otherwise specified. To compute grid distances, multiply
ground-level distances by the average combined factor of
0.999481. The average combined factor has been
determined based on an ellipsoidal elevation of 769 metres.

Grid bearings are derived from differential carrier phase
GNSS observations and are referred to the central meridian
of UTM Zone 10 North. To obtain local astronomic bearings
referred to the meridian through TH889, add 0°08'32".

This plan dedicates arterial highway as authorized by the minister
of transportation and infrastructure.

This plan lies within the City of Prince George.
This plan lies within the Agricultural Land Reserve.
This plan lies within the Regional District of Fraser-Fort George.

The field survey represented by this plan was completed on the
5th day of July, 2016.
Mark Rossmann, BCLS 926

Ministry of Transportation and Infrastructure File Number: PS731801

HBH
LAND SURVEYING INC.

3750 1st Avenue, PO Box 536
Smithers, BC V0J 2N0
Phone & Fax: 250.847.3808
BCLS@HBHLandSurveying.ca

HBH File No. MOT1602