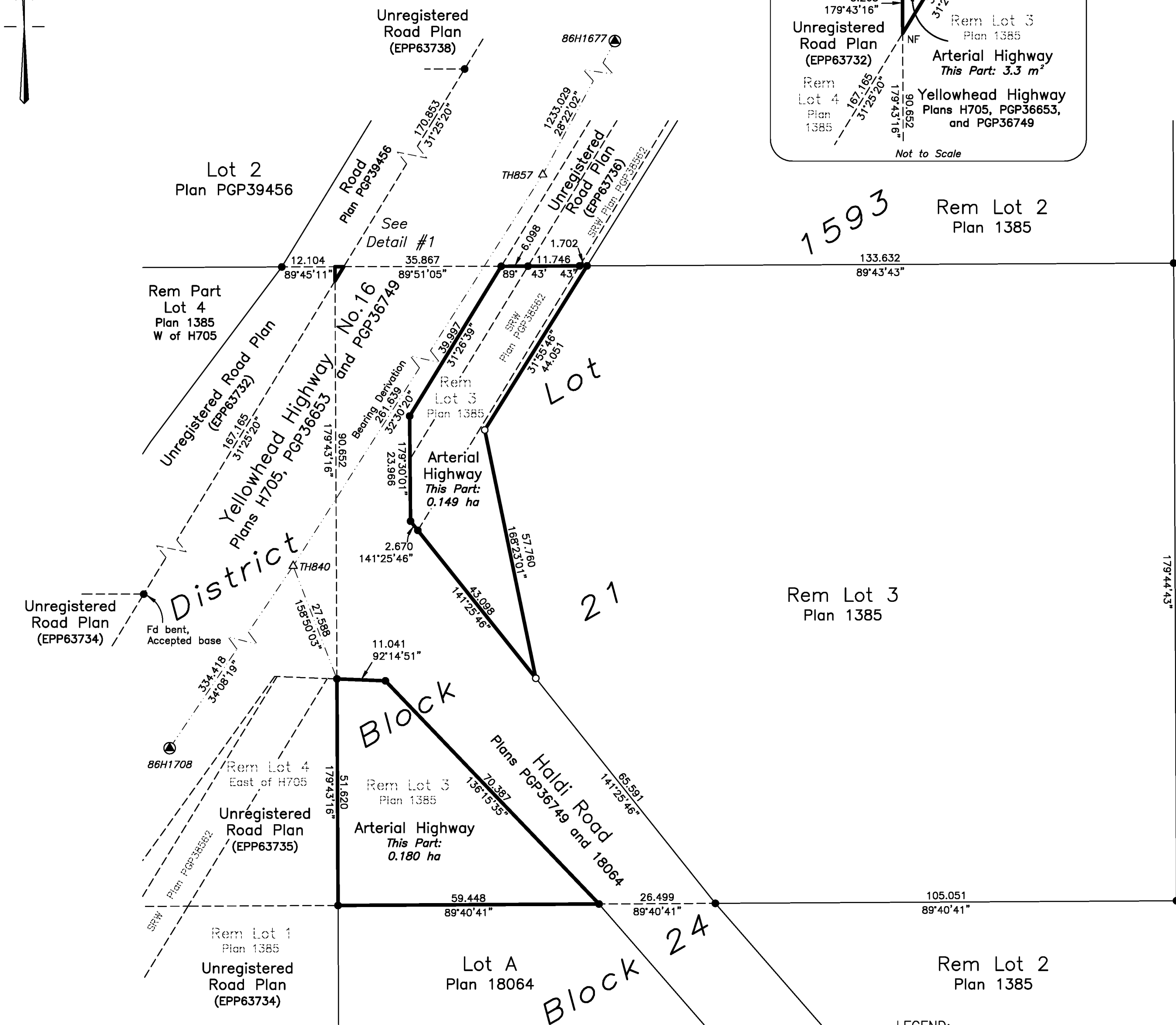
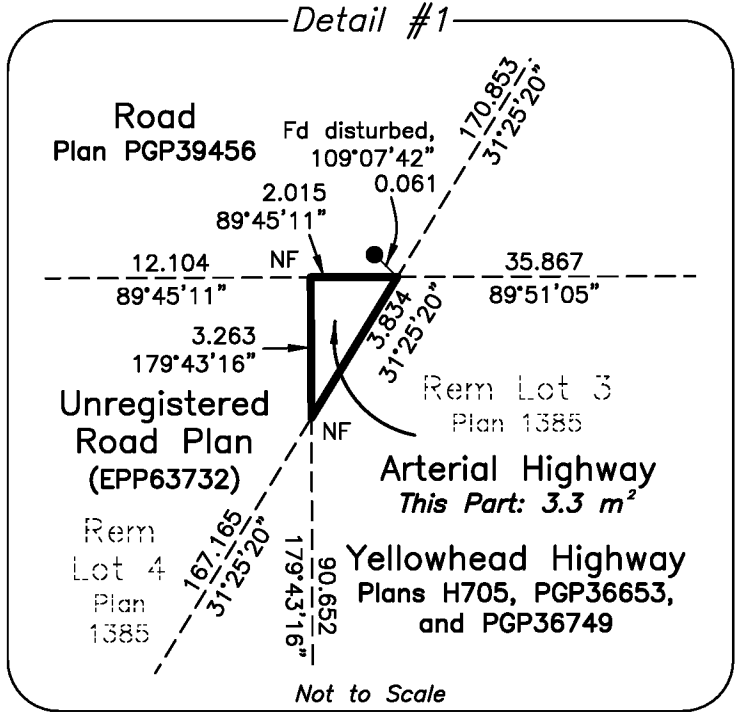


PLAN EPP63737



REFERENCE PLAN

Of Part of Lot 3 Block 21 District Lot 1593 Cariboo District Plan 1385 Except Plans H705 and PGP36749

Pursuant to Section 107 of the Land Title Act.

BCGS 93G.086

SCALE:



The intended plot size of this plan is 560mm in width by 432mm in height (C size) when plotted at a scale of 1:750

BOOK OF REFERENCE:

Description	Area – Arterial Highway
Rem Lot 3 (W of Highway Plan H705)	3.3 m ²
Rem Lot 3 (E of Highway Plan H705, N of Haldi Road)	0.149 ha
Rem Lot 3 (S of Haldi Road)	0.180 ha
Total – Rem Lot 3 Bk 21	0.329 ha

Integrated Survey Area No. 39, Prince George, NAD 83 (CSRS) (2002.0).

The UTM coordinates and estimated horizontal positional accuracy achieved are derived from 7 hours of GNSS dual frequency observations processed using the Precise Point Positioning (PPP) service provided by Natural Resources Canada.

This plan shows horizontal ground-level distances unless otherwise specified. To compute grid distances, multiply ground-level distances by the average combined factor of 0.999481. The average combined factor has been determined based on an ellipsoidal elevation of 769 metres.

Grid bearings are derived from differential carrier phase GNSS observations and are referred to the central meridian of UTM Zone 10 North. To obtain local astronomic bearings referred to the meridian through TH840, add 0°08'04”.

This plan dedicates arterial highway as authorized by the Minister of Transportation and Infrastructure.

This plan lies within the City of Prince George. This plan lies within the Regional District of Fraser-Fort George.

The field survey represented by this plan was completed on the 5th day of July, 2016. Mark Rossmann, BCLS 926

UTM Coordinates NAD 83 (CSRS) (2002.0), Zone 10				
Station	Northing	Easting	CSF	EHPA
TH840	5965776.90	510949.07	0.999486	0.03
TH857	5965997.44	511089.59	0.999487	0.03

LEGEND:

- Denotes standard iron post found
- Denotes standard iron post placed
- ⊙ Denotes control monument found
- △ Denotes traverse hub placed
- CSF Denotes 'combined scale factor'
- EHPA Denotes 'estimated horizontal positional accuracy'

HBH LAND SURVEYING INC.
 3750 1st Avenue, PO Box 536
 Smithers, BC V0J 2N0
 Phone & Fax: 250.847.3808
 BCLS@HBHLandSurveying.ca

HBH File No. MOT1602