

**REFERENCE PLAN OF LOT 57, DISTRICT LOT 1563,
CARIBOO DISTRICT, PLAN 916.**

PLAN EPP62203

PURSUANT TO SECTION 100(1)(a) OF THE LAND TITLE ACT.

BCGS 93G.087



THE INTENDED PLOT SIZE OF THIS PLAN IS 560 mm IN WIDTH BY 432 mm IN HEIGHT (C SIZE) WHEN PLOTTED AT A SCALE OF 1:1250.

ALL DISTANCES ARE IN METRES AND DECIMALS THEREOF.

GRID BEARINGS ARE DERIVED FROM DIFFERENTIAL DUAL FREQUENCY GNSS OBSERVATIONS AND ARE REFERRED TO THE CENTRAL MERIDIAN OF UTM ZONE 10 (123° WEST LONGITUDE).

THE UTM COORDINATES AND ESTIMATED HORIZONTAL POSITIONAL ACCURACY ACHIEVED ARE DERIVED FROM DUAL FREQUENCY GNSS OBSERVATIONS USING PRECISE POINT POSITIONING SERVICES OF NATURAL RESOURCES CANADA.

THIS PLAN SHOWS HORIZONTAL GROUND-LEVEL DISTANCES, UNLESS OTHERWISE SPECIFIED. TO COMPUTE GRID DISTANCES, MULTIPLY GROUND-LEVEL DISTANCES BY THE AVERAGE COMBINED FACTOR OF 0.9994998. THE AVERAGE COMBINED FACTOR HAS BEEN DETERMINED BASED ON AN ELLIPSOIDAL ELEVATION OF 669.9 METRES.

NOTE:
SOME POSTS ARE EXAGGERATED FOR CLARITY.

LEGEND

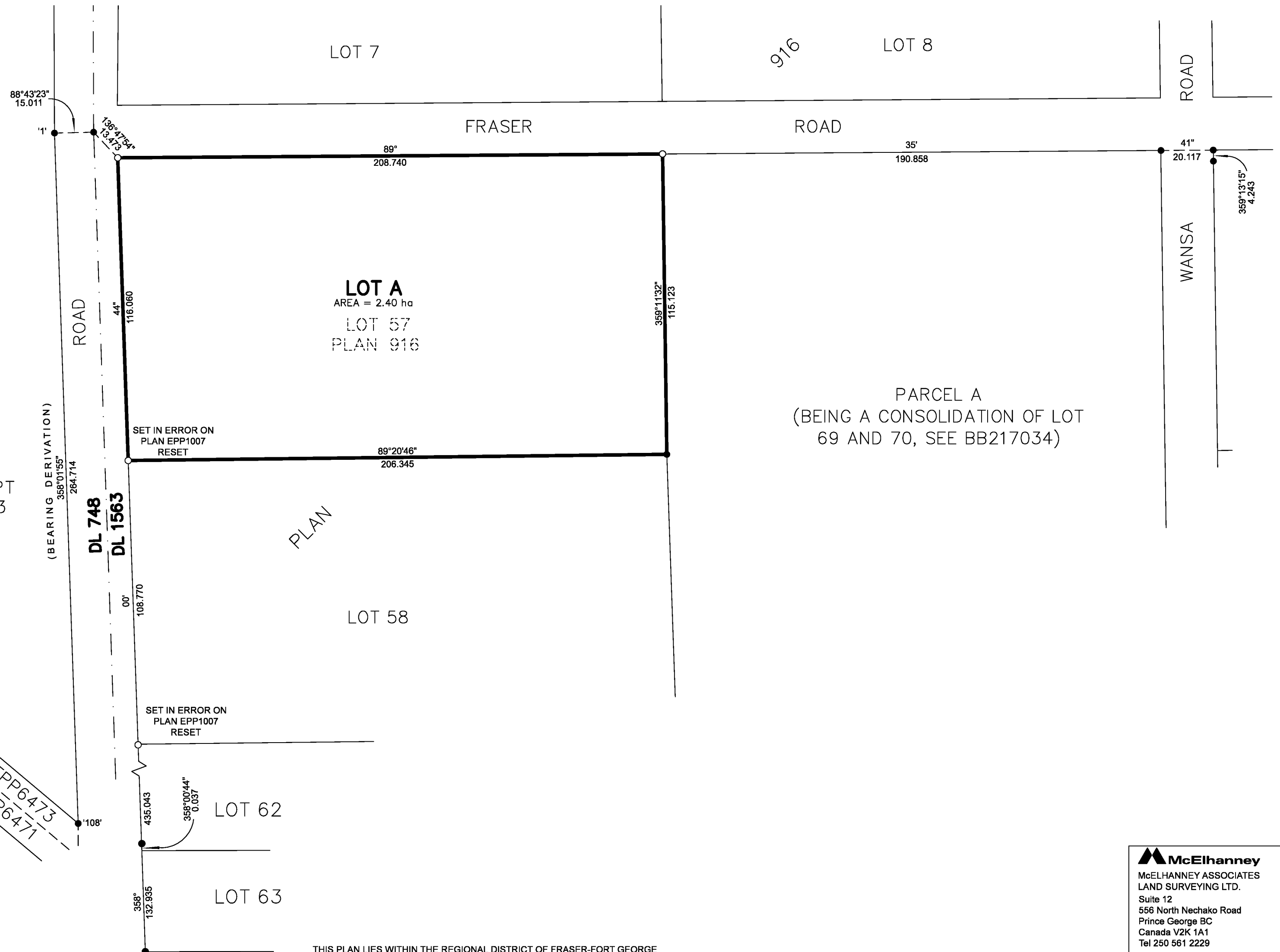
SYMBOLS	DESCRIPTION
FOUND PLACED	
● ○	STANDARD IRON POST

GEOREFERENCING POSITIONS UTM COORDINATES, ZONE 10, NAD 83 (CSRS), VERSION 2002.0			
STATION	NORTHING	EASTING	ESTIMATED HORIZONTAL POSITIONAL ACCURACY
FDIP '1'	5967817.85	519326.62	0.05
FDIP '108'	5967551.90	519315.51	0.05

BLOCK C EXCEPT
PLAN EPP6473



ROAD PLAN EPP6473
ROAD PLAN EPP6471



THIS PLAN IS PREPARED AS THE OFFICIAL PLAN OF THE LAND SHOWN HEREON FOR THE SURVEYOR GENERAL.

THE FIELD SURVEY REPRESENTED BY THIS PLAN WAS COMPLETED ON THE 16TH DAY OF MAY, 2016
SHAUNA C. GOERTZEN, BCLS 798

THIS PLAN LIES WITHIN THE REGIONAL DISTRICT OF FRASER-FORT GEORGE

McElhanney
McELHANNEY ASSOCIATES
LAND SURVEYING LTD.
Suite 12
556 North Nechako Road
Prince George BC
Canada V2K 1A1
Tel 250 561 2229
File No. 2341-6437