

**Subdivision Plan of Part of Lot 10, District Lot 1599,
Cariboo District Plan 11631.**

Plan EPP62096

BCGS 93G.086



All distances are horizontal ground level distances and decimals thereof unless otherwise denoted.

The intended plot size is 560mm in width by 864mm in height (D size) when plotted at a scale of 1:500.

Legend

- Found Placed
- ○ Denotes Standard Iron Post
 - ⊙ Denotes Control Monument

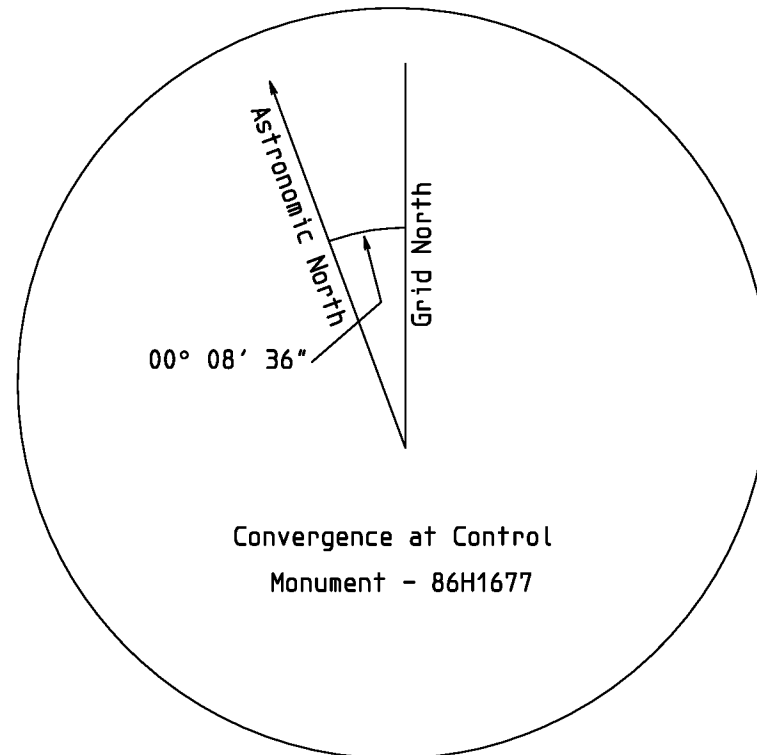


Integrated Survey Area No 39, Prince George (CSRS), Zone 10

Bearings are NAD83 (CSRS) Grid and are derived from Control Monuments 86H1677 and 86H1681 and are referred to the Central Meridian of UTM Zone 10.

The UTM coordinates and Estimated Network horizontal accuracy are derived from the MASCO published coordinates and standard deviations for the Geodetic Control Monuments 86H1677 and 86H1681.

This Plan shows horizontal ground-level distances. To compute grid distances, multiply ground level distances by the average combined factor of 0.9994885. The combined scale factor has been determined based on an ellipsoidal elevation of 738.28 metres at Control Monument 86H1677.



Control Monument 86H1677
Datum NAD83 (CSRS) (2002) UTM Zone 10
UTM Northing 5967081.961
UTM Easting 511675.062
Combined Scale Factor 0.9994885
Estimated Network Horizontal Accuracy 0.06m

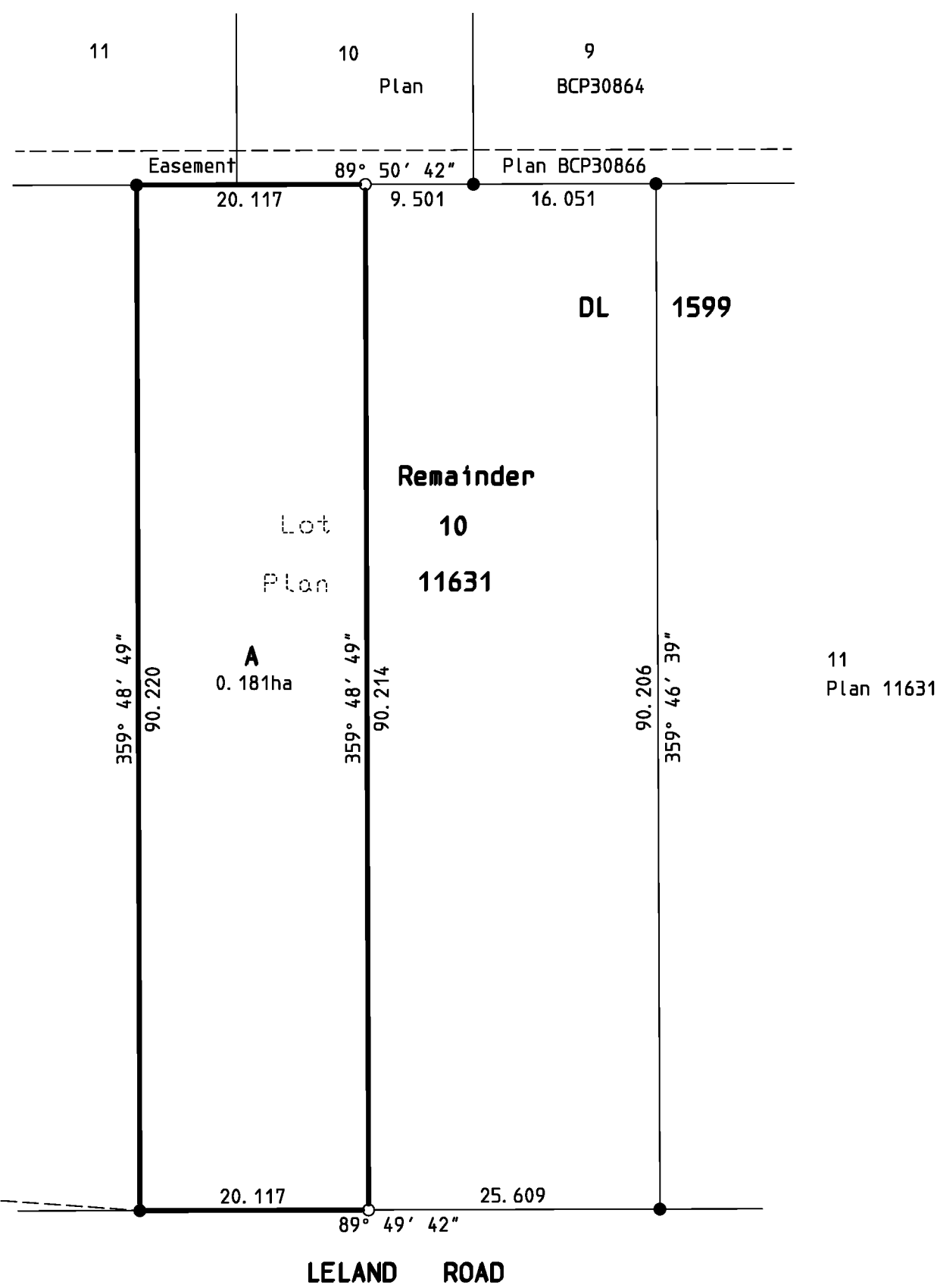
Control Monument 86H1677

Control Monument 86H1681

Control Monument
Datum NAD83 (CSRS) (2002) UTM Zone 10
UTM Northing 5966335.883
UTM Easting 511271.505
Combined Scale Factor 0.9994885
Estimated Network Horizontal Accuracy 0.06m

(bearing derivation)
28° 24' 32"
846.652

572.558
94° 01' 31"



This Plan lies within jurisdiction of the Approving Officer for the City of Prince George.
File No. SD100501

The field survey represented by this plan was completed on the 3rd day of May, 2016 by Richard Cindric, BCLS (625).

This Plan lies within the Fraser Fort-George Regional District.

Cindric Surveying
British Columbia Land Surveyor
Civic address: Suite C-331 St. Laurent Ave.
Mail address: PO Box 4165
Quesnel BC V2J 2J9
Phone: 250-992-2265
email: cindricsurv@shaw.ca File: 1695