

# EXPLANATORY PLAN OF EASEMENT OVER PART OF LOT B, DISTRICT LOT 4048, CARIBOO DISTRICT, PLAN EPP50760.

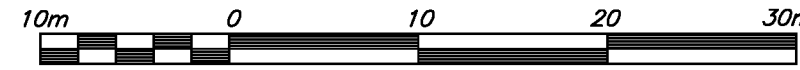
PLAN EPP61367

PURSUANT TO SECTION 99(1)(e) OF THE LAND TITLE ACT.

**BCGS 93G.096**

INTEGRATED SURVEY AREA No. 39, PRINCE GEORGE, NAD83 (CSRS) 4.0.0.BC.1

THE INTENDED PLOT SIZE OF THIS PLAN IS 560mm IN WIDTH BY 432mm IN HEIGHT (C SIZE) WHEN PLOTTED AT A SCALE OF 1:400



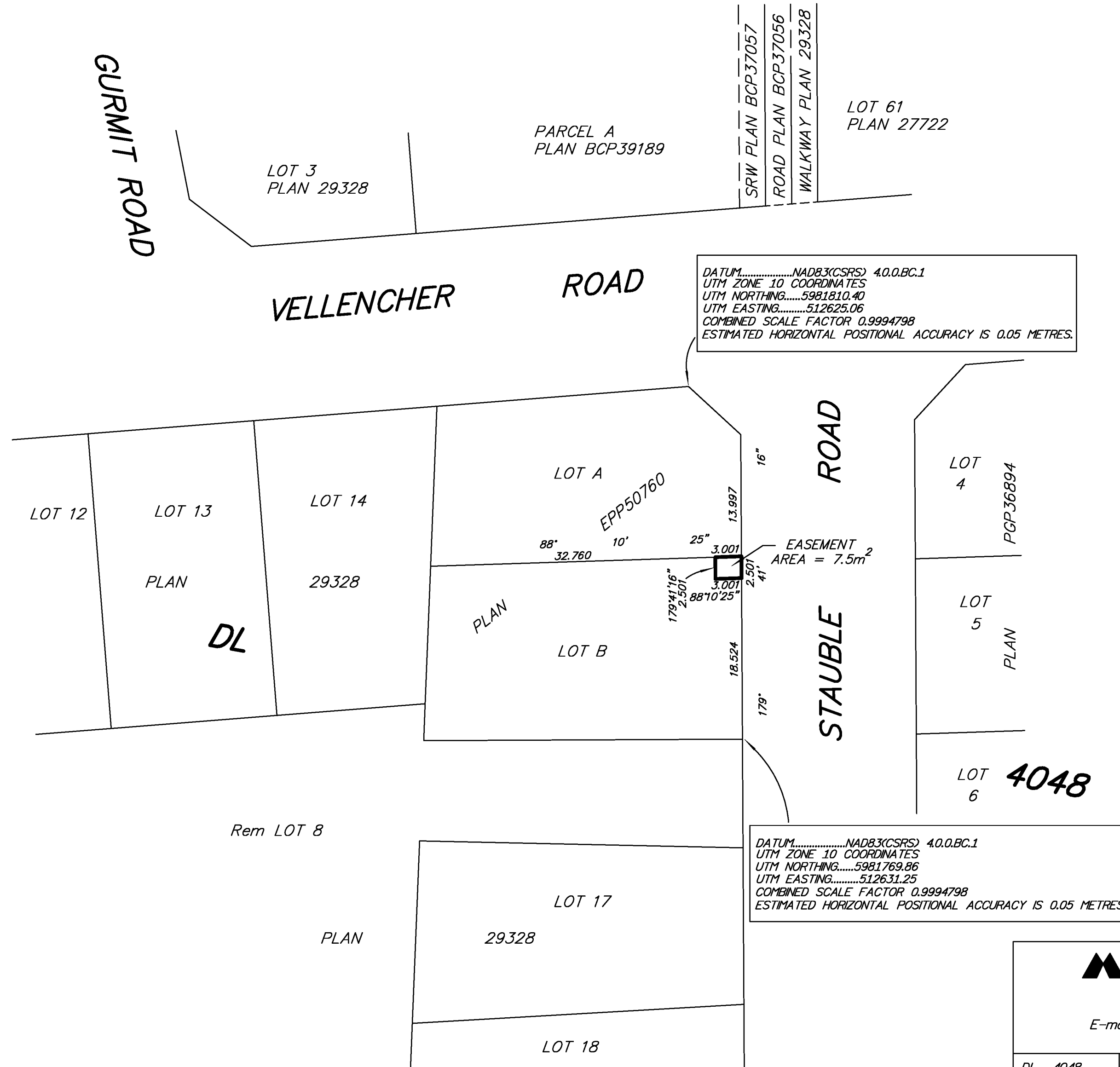
ALL DISTANCES ARE HORIZONTAL GROUND-LEVEL AND ARE SHOWN IN METRES AND DECIMALS THEREOF, UNLESS OTHERWISE INDICATED.

**LEGEND**

GRID BEARINGS ARE DERIVED FROM PREVIOUSLY INTEGRATED PLAN EPP50760.

THE UTM COORDINATES AND ESTIMATED HORIZONTAL POSITIONAL ACCURACY ARE DERIVED FROM PLAN EPP50760.

THIS PLAN SHOWS HORIZONTAL GROUND-LEVEL DISTANCES, UNLESS OTHERWISE SPECIFIED. TO COMPUTE GRID DISTANCES, MULTIPLY GROUND-LEVEL DISTANCES BY THE COMBINED FACTOR OF 0.9994798 WHICH HAS BEEN DERIVED FROM PLAN EPP50760.



THIS PLAN IS BASED ON THE FOLLOWING LAND TITLE AND SURVEY AUTHORITY OF BC RECORDS: PLAN EPP50760  
 DARREN KENT, BCLS 904  
 12th DAY OF JULY, 2016

THIS PLAN LIES WITHIN THE REGIONAL DISTRICT OF FRASER – FORT GEORGE.

**McElhanney**  
 McElhanney Associates  
 Land Surveying Ltd.  
 Prince George, B.C.  
 E-mail: pgmals@mcElhanney.com  
 Ph: (250) 561-2229

DL - 4048	File No. - 6308-E2
-----------	--------------------