

SUBDIVISION PLAN OF LOTS 1, 2, AND 3, DISTRICT LOT 2425, CARIBOO DISTRICT, PLAN 13794

PLAN EPP61363

PURSUANT TO SECTION 67 OF LAND TITLE ACT

BCGS 93J.006



THE INTENDED PLOT SIZE OF THIS PLAN IS 560 mm IN WIDTH BY 432 mm IN HEIGHT (C SIZE) WHEN PLOTTED AT A SCALE OF 1:750.

ALL DISTANCES ARE IN METRES AND DECIMALS THEREOF.

GRID BEARINGS ARE DERIVED FROM DIFFERENTIAL DUAL FREQUENCY GNSS OBSERVATIONS AND ARE REFERRED TO THE CENTRAL MERIDIAN OF UTM ZONE 10 NORTH.

THE UTM COORDINATES AND ESTIMATED HORIZONTAL POSITIONAL ACCURACY ACHIEVED ARE DERIVED FROM DUAL FREQUENCY GNSS OBSERVATIONS PROCESSED USING NRCAN'S PRECISE POINT POSITIONING SERVICE.

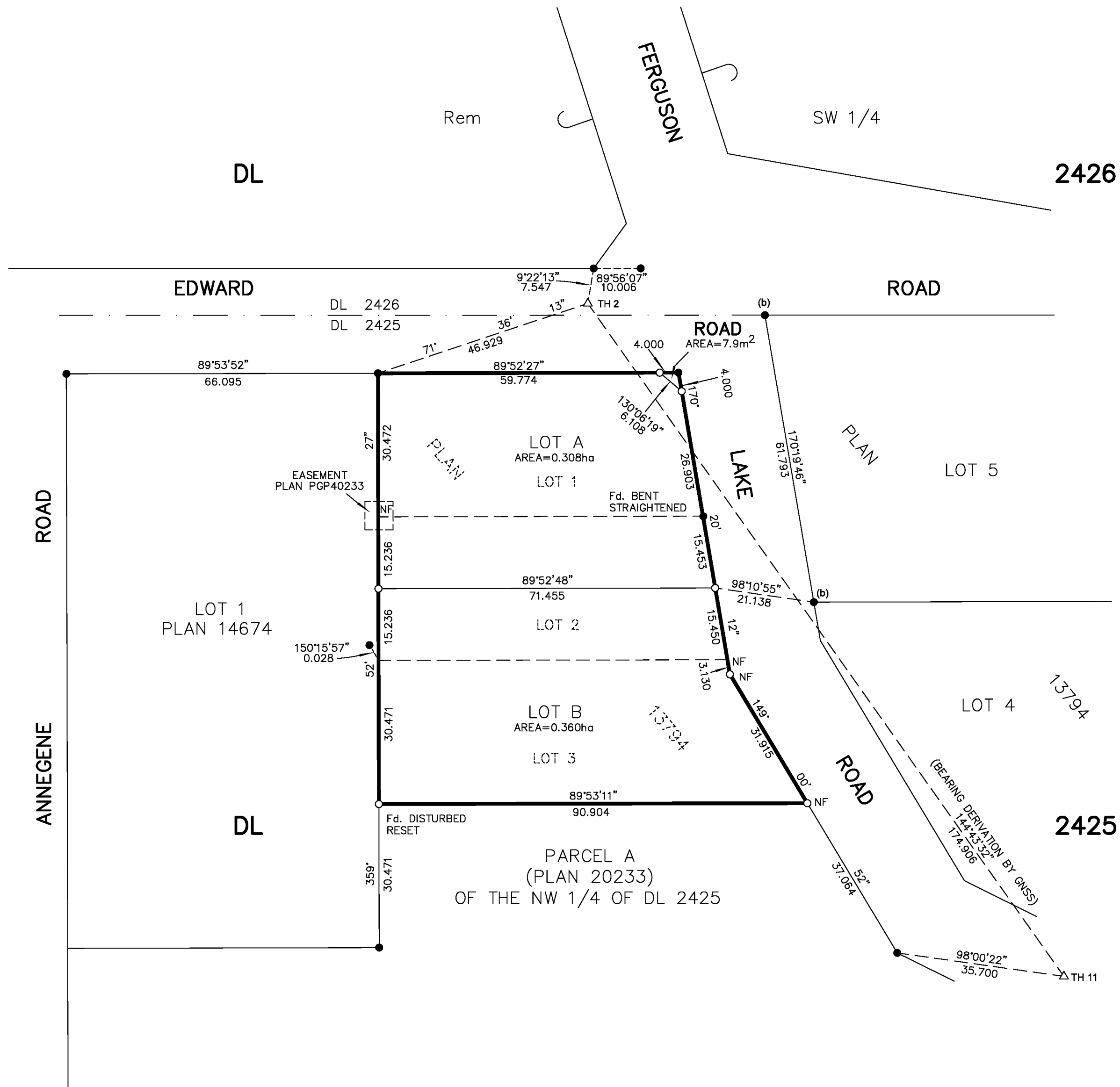
THIS PLAN SHOWS HORIZONTAL GROUND-LEVEL DISTANCES UNLESS OTHERWISE SPECIFIED. TO COMPUTE GRID DISTANCES, MULTIPLY GROUND-LEVEL DISTANCES BY THE AVERAGE COMBINED FACTOR OF 0.99948559. THE AVERAGE COMBINED FACTOR HAS BEEN DETERMINED BASED ON AN ELLIPSOIDAL ELEVATION OF 740.95 METRES.

LEGEND:

SYMBOLS		DESCRIPTION
FOUND	PLACED	
●	○	STANDARD IRON POST
△		TRAVERSE HUB
(b)		BURIED

NOTE: SOME POSTS AND LINES HAVE BEEN EXAGGERATED FOR CLARITY.

GEOREFERENCING POSITIONS			
UTM COORDINATES, ZONE 10, NAD83(CSRS) 2002.0			
STATION	NORTHING	EASTING	ESTIMATED HORIZONTAL POSITIONAL ACCURACY
TH 2	5986331.49	512114.09	0.07
TH 11	5986188.77	512215.05	0.07



THIS PLAN LIES WITHIN THE JURISDICTION OF THE APPROVING OFFICER FOR THE CITY OF PRINCE GEORGE. CPG FILE No.: SD100510

THE FIELD SURVEY REPRESENTED BY THIS PLAN WAS COMPLETED ON THE 26th DAY OF MAY, 2016. DARREN KENT, BCLS 904

THIS PLAN LIES WITHIN THE REGIONAL DISTRICT OF FRASER-FORT GEORGE

McElhanney
 McELHANNEY ASSOCIATES
 LAND SURVEYING LTD.
 Suite 12
 556 North Nechako Road
 Prince George BC
 Canada V2K 1A1
 Tel 250 561 2229

File No. 6430-S
 CPG FILE No.: SD100510