

REFERENCE PLAN OF ROAD THROUGH PART OF LOT A DISTRICT LOT 343, CARIBOO DISTRICT, PLAN EPP61360.

PLAN EPP61362

PURSUANT TO SECTION 107 OF THE LAND TITLE ACT.

INTEGRATED SURVEY AREA No. 39 PRINCE GEORGE, BC

BCGS 93G.097



THE INTENDED PLOT SIZE OF THIS PLAN IS 560 mm IN WIDTH BY 432 mm IN HEIGHT (C SIZE) WHEN PLOTTED AT A SCALE OF 1:1000.

ALL DISTANCES ARE IN METRES AND DECIMALS THEREOF.

GRID BEARINGS ARE DERIVED FROM OBSERVATIONS BETWEEN GEODETIC CONTROL MONUMENTS 85H1105 AND 85H1066.

THE UTM COORDINATES AND ESTIMATED HORIZONTAL POSITIONAL ACCURACY ACHIEVED HAVE BEEN DERIVED FROM MASCOT PUBLISHED COORDINATES AND STANDARD DEVIATIONS FOR GEODETIC CONTROL MONUMENTS 85H1105 AND 85H1066.

THIS PLAN SHOWS HORIZONTAL GROUND-LEVEL DISTANCES UNLESS OTHERWISE SPECIFIED. TO COMPUTE GRID DISTANCES, MULTIPLY GROUND-LEVEL DISTANCES BY THE AVERAGE COMBINED FACTOR OF 0.9995126 WHICH HAS BEEN DERIVED FROM CONTROL MONUMENTS 85H1105 AND 85H1066.

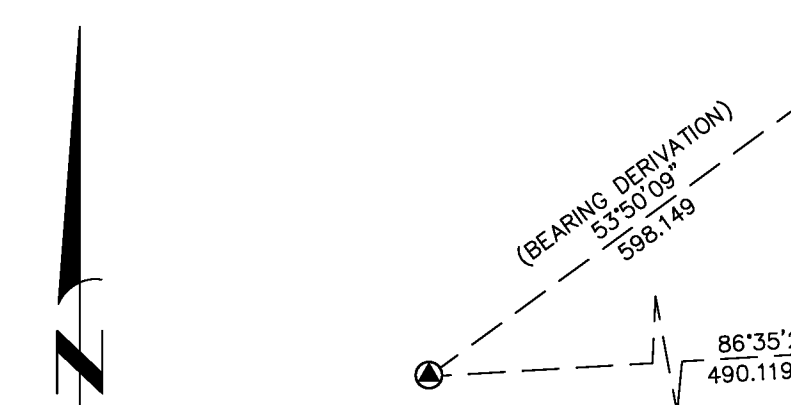
LEGEND:

SYMBOLS		DESCRIPTION
●	○	CONTROL MONUMENT
○	○	STANDARD IRON POST
■	■	LEAD PLUG
■	■	SIP
■	■	SHORT IRON POST

NOTE:
THIS PLAN SHOWS ONE OR MORE WITNESS POSTS WHICH ARE NOT SET ON THE TRUE CORNER(S).

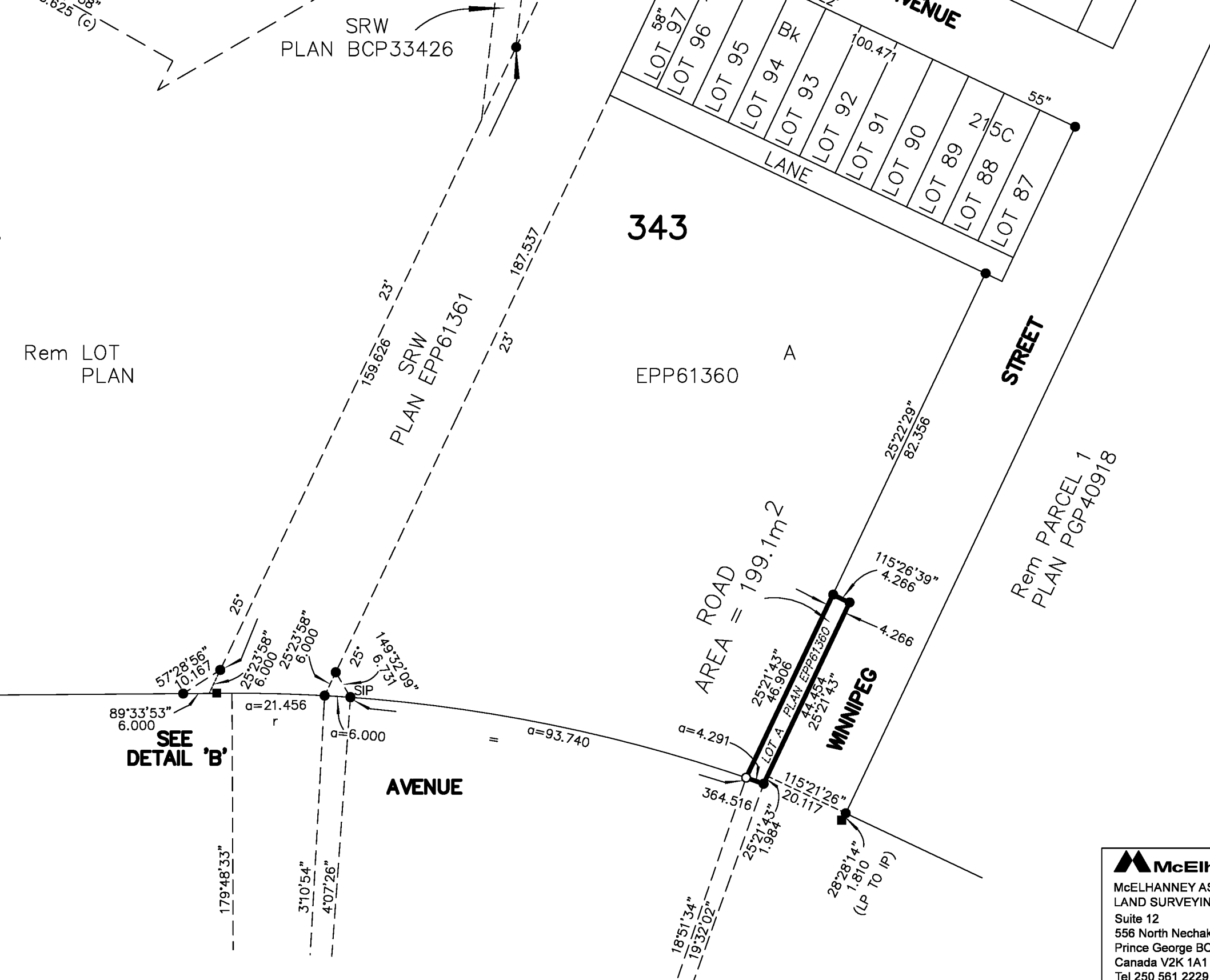
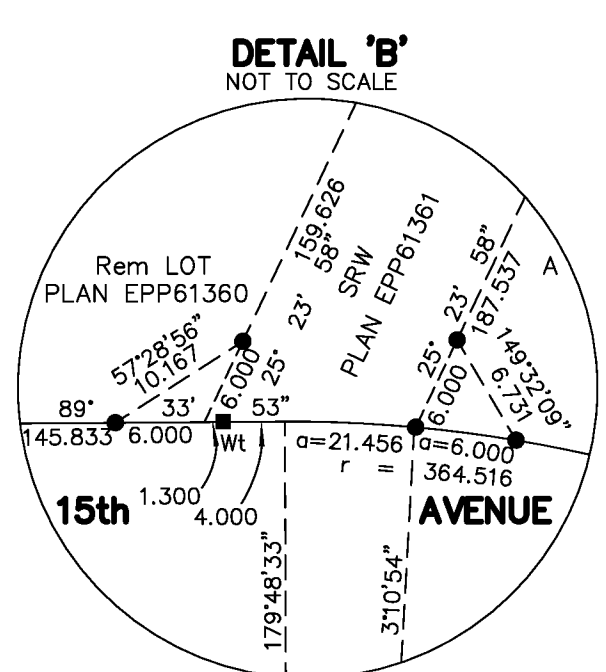
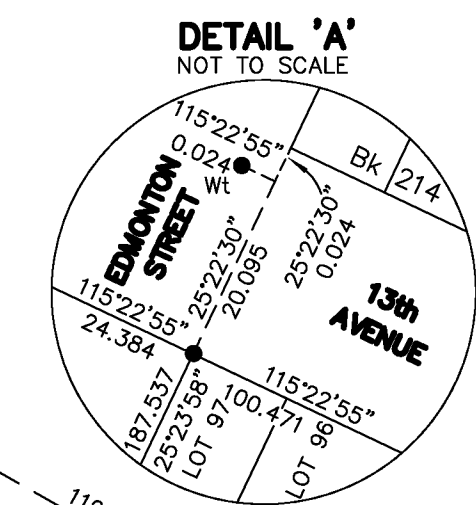
NOTE:
SOME POSTS AND LINES HAVE BEEN EXAGGERATED FOR CLARITY.

GEOREFERENCING POSITIONS UTM COORDINATES, ZONE 10, NAD83(CSR)S 4.0.0.BC.1			
STATION	NORTHING	EASTING	ESTIMATED HORIZONTAL POSITIONAL ACCURACY
85H1105	5973559.82	514864.84	0.05
85H1066	5973912.62	515347.51	0.05



THE FIELD SURVEY REPRESENTED BY THIS PLAN WAS COMPLETED ON THE 20th DAY OF MAY, 2016
DARREN KENT, BCLS 904

THIS PLAN LIES WITHIN THE REGIONAL DISTRICT OF FRASER-FORT GEORGE



McElhanney
MCELHANNEY ASSOCIATES
LAND SURVEYING LTD.
Suite 12
556 North Nechako Road
Prince George BC
Canada V2K 1A1
Tel 250 561 2229

File No. 2341-6401-RD