

# SUBDIVISION PLAN OF LOT 7 AND PART OF LOT 6, BLOCK 110, DISTRICT LOT 343, CARIBOO DISTRICT, PLAN 1268.

PLAN EPP60907

PURSUANT TO SECTION 67 OF THE LAND TITLE ACT  
INTEGRATED SURVEY AREA No. 39 PRINCE GEORGE, BC  
BCGS 93G.097



THE INTENDED PLOT SIZE OF THIS PLAN IS 560 mm IN WIDTH BY 432 mm IN HEIGHT (C SIZE) WHEN PLOTTED AT A SCALE OF 1:500.

ALL DISTANCES ARE IN METRES AND DECIMALS THEREOF.

GRID BEARINGS ARE DERIVED FROM OBSERVATIONS BETWEEN GEODETIC CONTROL MONUMENTS 85H1338 AND 85H1078.

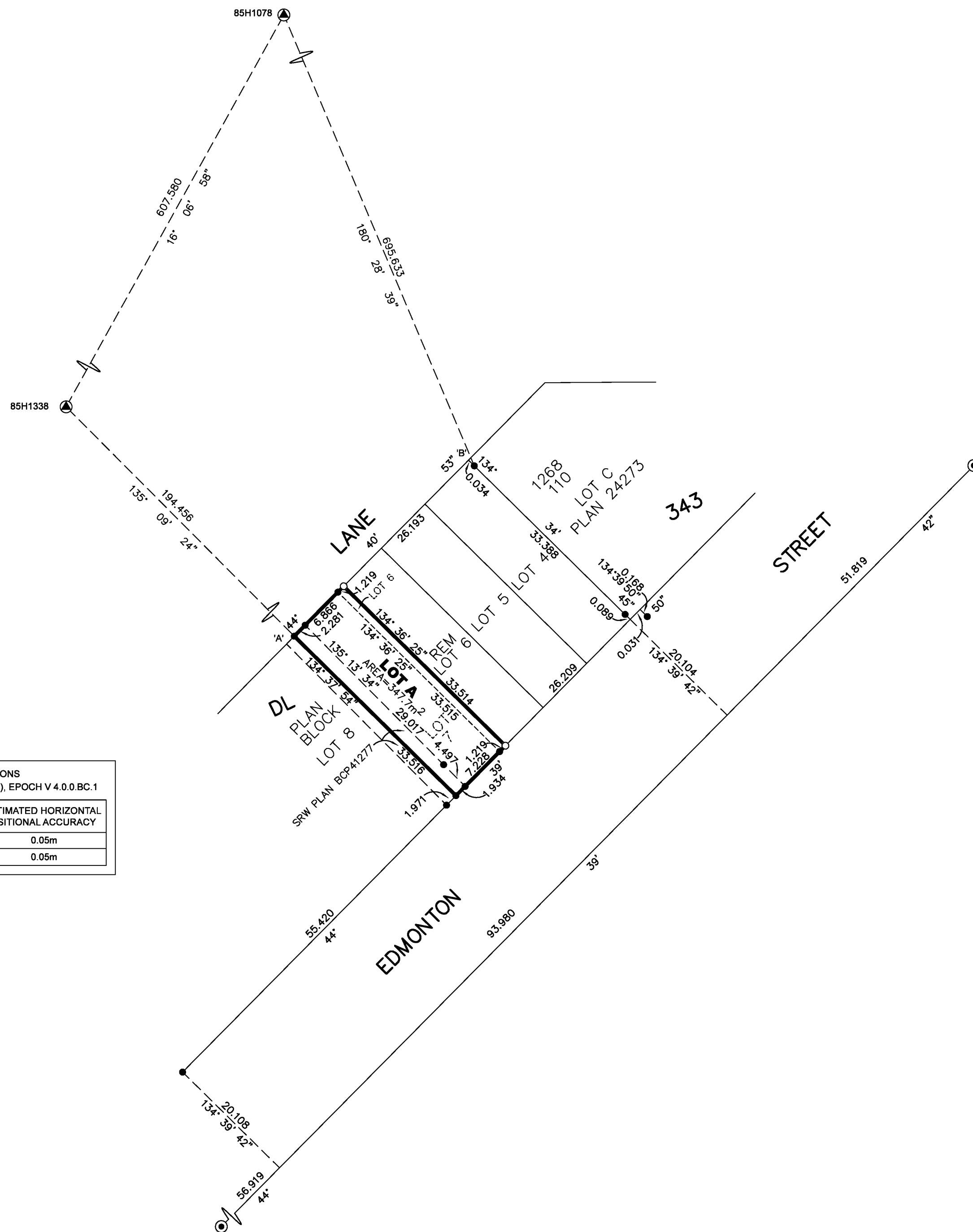
THIS PLAN SHOWS HORIZONTAL GROUND-LEVEL DISTANCES UNLESS OTHERWISE SPECIFIED. TO COMPUTE GRID DISTANCES, MULTIPLY GROUND-LEVEL DISTANCES BY THE AVERAGE COMBINED FACTOR OF 0.9995129 WHICH HAS BEEN DERIVED FROM GEODETIC CONTROL MONUMENTS 85H1338 AND 85H1078.

THE UTM COORDINATES AND ESTIMATED HORIZONTAL POSITIONAL ACCURACY ACHIEVED HAVE BEEN DERIVED FROM MASCOT PUBLISHED COORDINATES AND STANDARD DEVIATIONS FOR GEODETIC CONTROL MONUMENT 85H1338.

### LEGEND:

SYMBOLS		DESCRIPTION
FOUND	PLACED	
⊙	⊙	CONTROL MONUMENT
⊙	⊙	STANDARD CONCRETE POST
●	○	STANDARD IRON POST

NOTE:  
SOME POSTS AND LINE ARE EXAGGERATED FOR CLARITY.



GEOREFERENCING POSITIONS			
UTM COORDINATES, ZONE 10, NAD83(CSRS), EPOCH V 4.0.0.BC.1			
STATION	NORTHING	EASTING	ESTIMATED HORIZONTAL POSITIONAL ACCURACY
Fd.IP'A'	5973422.26	515301.38	0.05m
Fd.IP'B'	5973448.22	515327.10	0.05m

THIS PLAN LIES WITHIN THE JURISDICTION OF THE APPROVING OFFICER FOR THE CITY OF PRINCE GEORGE

THE FIELD SURVEY REPRESENTED BY THIS PLAN WAS COMPLETED ON THE 28th DAY OF MARCH, 2016.  
SHAUNA C. GOERTZEN, BCLS 798

THIS PLAN LIES WITHIN THE REGIONAL DISTRICT OF FRASER-FORT GEORGE

**McElhanney**  
McELHANNEY ASSOCIATES  
LAND SURVEYING LTD.  
Suite 12  
556 North Nechako Road  
Prince George BC  
Canada V2K 1A1  
Tel 250 561 2229

File No. 2341-6424-SD  
ECR No. 184989