

**SUBDIVISION PLAN OF PART OF LOT 1,  
DISTRICT LOT 2425, CARIBOO DISTRICT,  
PLAN 15214.**

**PLAN EPP60830**

PURSUANT TO SECTION 67 OF THE LAND TITLE ACT  
INTEGRATED SURVEY AREA No. 39 PRINCE GEORGE, BC  
BCGS 93J.006



THE INTENDED PLOT SIZE OF THIS PLAN IS 432 mm IN WIDTH BY 560 mm IN HEIGHT (C SIZE) WHEN PLOTTED AT A SCALE OF 1:500.

ALL DISTANCES ARE IN METRES AND DECIMALS THEREOF.

GRID BEARINGS ARE DERIVED FROM OBSERVATIONS BETWEEN GEODETIC CONTROL MONUMENTS 86H1804 AND 86H1803.

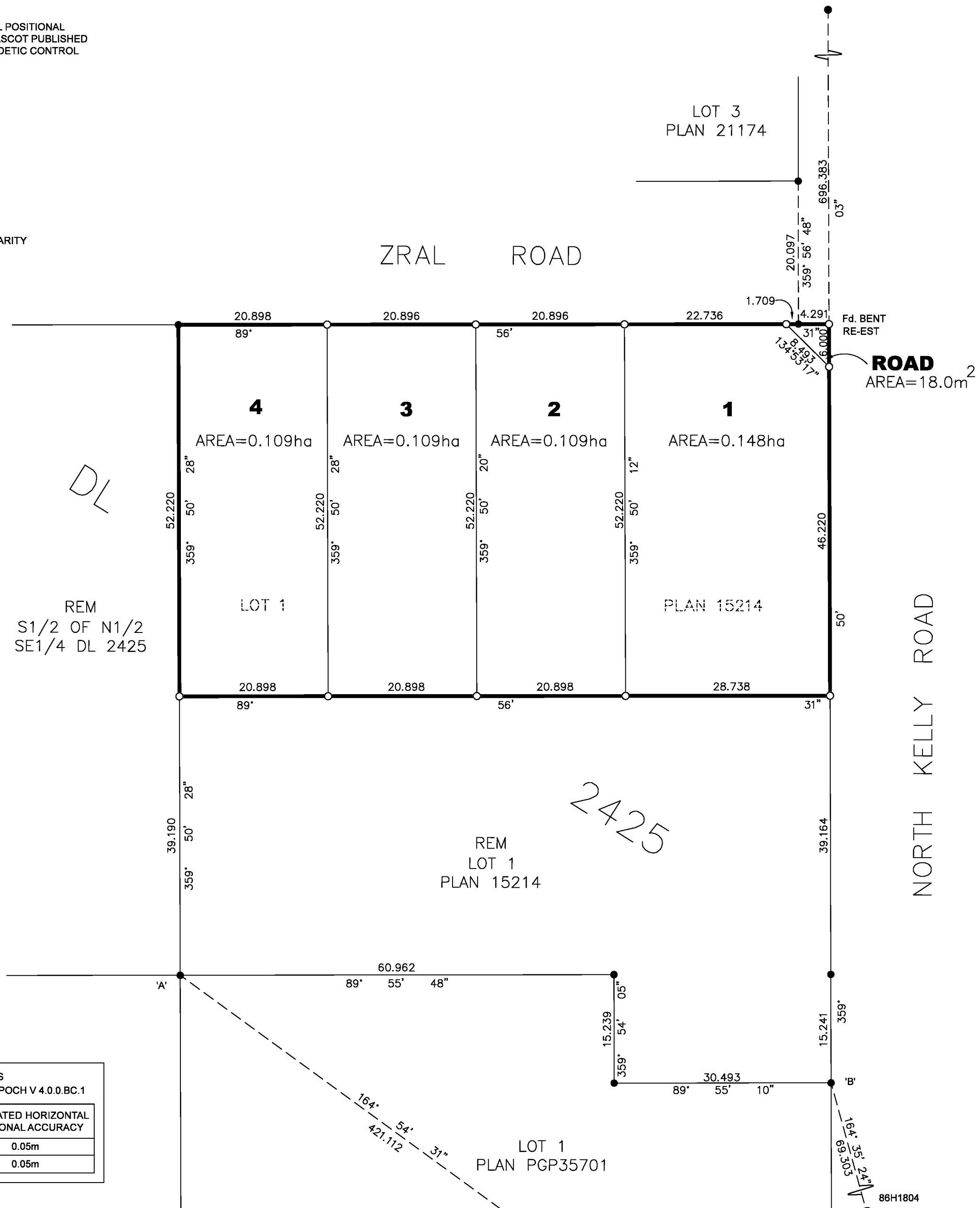
THIS PLAN SHOWS HORIZONTAL GROUND-LEVEL DISTANCES UNLESS OTHERWISE SPECIFIED. TO COMPUTE GRID DISTANCES, MULTIPLY GROUND-LEVEL DISTANCES BY THE AVERAGE COMBINED FACTOR OF 0.9994858 WHICH HAS BEEN DERIVED FROM GEODETIC CONTROL MONUMENTS 86H1804 AND 86H1803.

THE UTM COORDINATES AND ESTIMATED HORIZONTAL POSITIONAL ACCURACY ACHIEVED HAVE BEEN DERIVED FROM MASCOT PUBLISHED COORDINATES AND STANDARD DEVIATIONS FOR GEODETIC CONTROL MONUMENT 86H1804.

**LEGEND:**

SYMBOLS		DESCRIPTION
FOUND	PLACED	
		CONTROL MONUMENT
		STANDARD IRON POST

NOTE: SOME LINES MAY BE EXAGGERATED FOR CLARITY



GEOREFERENCING POSITIONS			
UTM COORDINATES, ZONE 10, NAD83(CSRs), EPOCH V 4.0.0.BC.1			
STATION	NORTHING	EASTING	ESTIMATED HORIZONTAL POSITIONAL ACCURACY
Fd.IP'A'	5985124.70	512929.54	0.05m
Fd.IP'B'	5985109.59	513020.96	0.05m

THIS PLAN LIES WITHIN THE JURISDICTION OF THE APPROVING OFFICER FOR THE CITY OF PRINCE GEORGE  
FILE No.: SD100509

THE FIELD SURVEY REPRESENTED BY THIS PLAN WAS COMPLETED ON THE 22nd DAY OF MARCH, 2016.  
SHAUNA C. GOERTZEN, BCLS 798

THIS PLAN LIES WITHIN THE REGIONAL DISTRICT OF FRASER-FORT GEORGE

**McElhanney**  
McELHANNEY ASSOCIATES  
LAND SURVEYING LTD.  
Suite 12  
556 North Nechako Road  
Prince George BC  
Canada V2K 1A1  
Tel 250 561 2229

File No. 2341-6421-SD  
ECR No. 184926