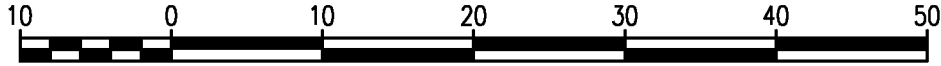


Subdivision Plan of Part of Lot 22, District Lot 3971, Cariboo District, Plan 20430.

Plan EPP6078

BCGS 93B.098

Scale 1:1000



All distances are in metres and decimals thereof unless otherwise indicated.

13

The intended plot size of this plan is 280mm in width by 432mm in height when plotted at a scale of 1:1000 (use B size sheet).

LEGEND:

Bearings are astronomic, derived from the westerly boundary of Lot 22, DL 3971, Plan 20430 - N 74°00' W ~ 172°13'00"

- Standard Iron Post Found
- Standard Iron Post Placed
- + Unmarked Measured Point

Plan

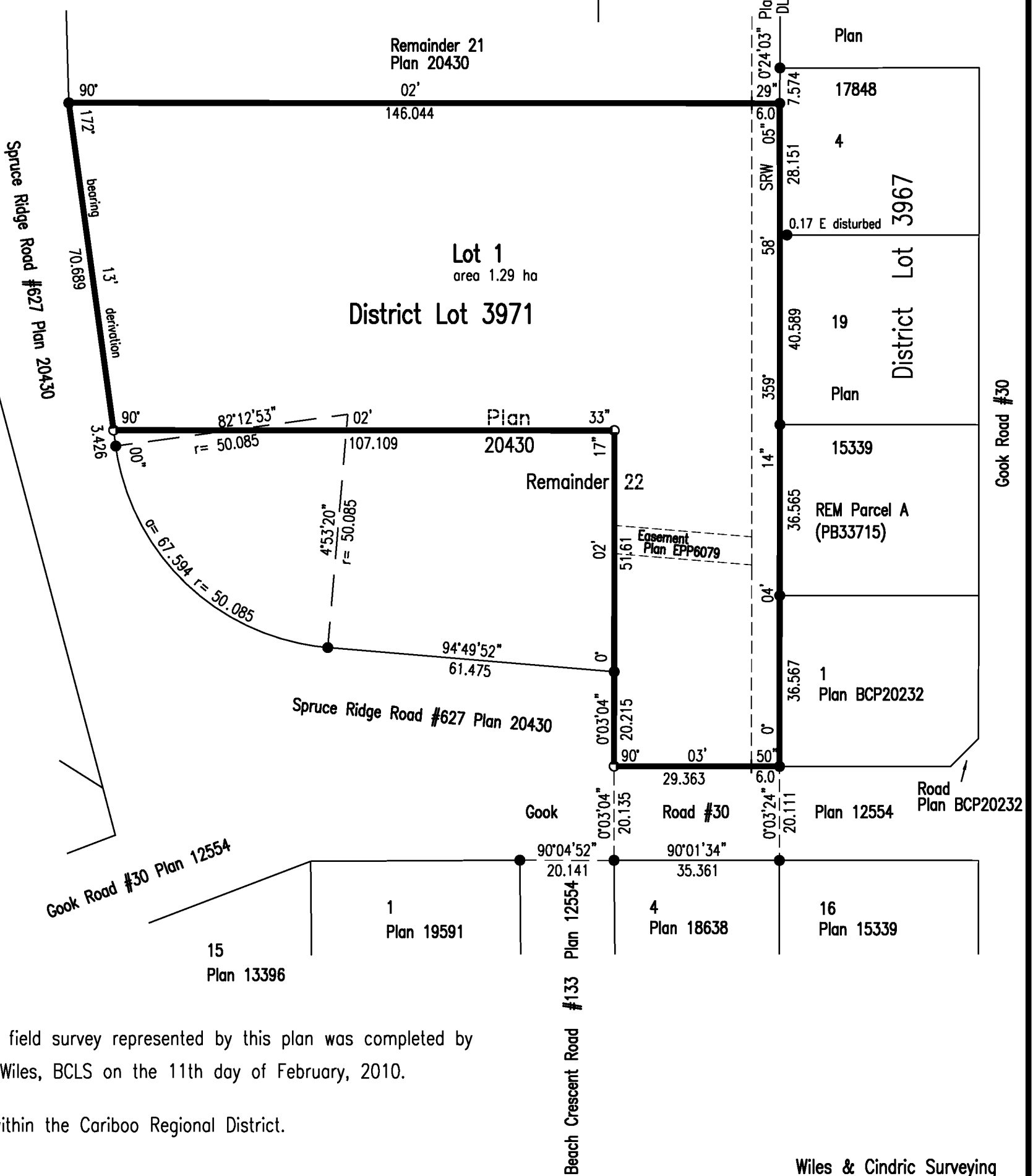
12

11

20430

10

9



This field survey represented by this plan was completed by BR Wiles, BCLS on the 11th day of February, 2010.

This plan lies within the Cariboo Regional District.

This plan lies within the jurisdiction of the Provincial Approving Officer.

File No. 2009-06307

Wiles & Cindric Surveying
 British Columbia Land Surveyors
 Civic - 2308 Blackwater Road
 Mail - 2323 Claymine Road
 Quesnel, BC V2J 7C5
 tel 250-992-2265 file 1493-4
 email wilcinsurv@telus.net