

REFERENCE PLAN OF CONSOLIDATION OF BLOCK C,
DISTRICT LOT 748, EXCEPT PLAN EPP6473 AND EPP46674
AND CLOSED ROAD AS SHOWN ON PLAN EPP59527,
CARIBOO DISTRICT.

PURSUANT TO SECTION 100(1)(b) OF THE LAND TITLE ACT.

INTEGRATED SURVEY AREA No. 39 PRINCE GEORGE, BC

BCGS 93G.087



Metric
THE INTENDED PLOT SIZE OF THIS PLAN IS 864 mm IN WIDTH BY 560 mm IN HEIGHT (D SIZE) WHEN PLOTTED AT A SCALE OF 1:2000.

ALL DISTANCES ARE IN METRES AND DECIMALS THEREOF.

GRID BEARINGS ARE DERIVED FROM OBSERVATIONS BETWEEN GEODETIC CONTROL MONUMENTS 86H1724 AND 86H1758.

THIS PLAN SHOWS HORIZONTAL GROUND-LEVEL DISTANCES UNLESS OTHERWISE SPECIFIED. TO COMPUTE GRID DISTANCES, MULTIPLY GROUND-LEVEL DISTANCES BY THE COMBINED FACTOR OF 0.9995014 WHICH HAS BEEN DERIVED BY SINGLE POINT POSITIONING TECHNIQUES USING THE PRECISE POINT POSITIONING (PPP) SERVICE OF NATURAL RESOURCES CANADA.

THE UTM COORDINATES AND ESTIMATED HORIZONTAL POSITIONAL ACCURACY ACHIEVED HAVE BEEN DERIVED FROM MASCOT PUBLISHED COORDINATES AND STANDARD DEVIATIONS FOR GEODETIC CONTROL MONUMENT 86H1724.

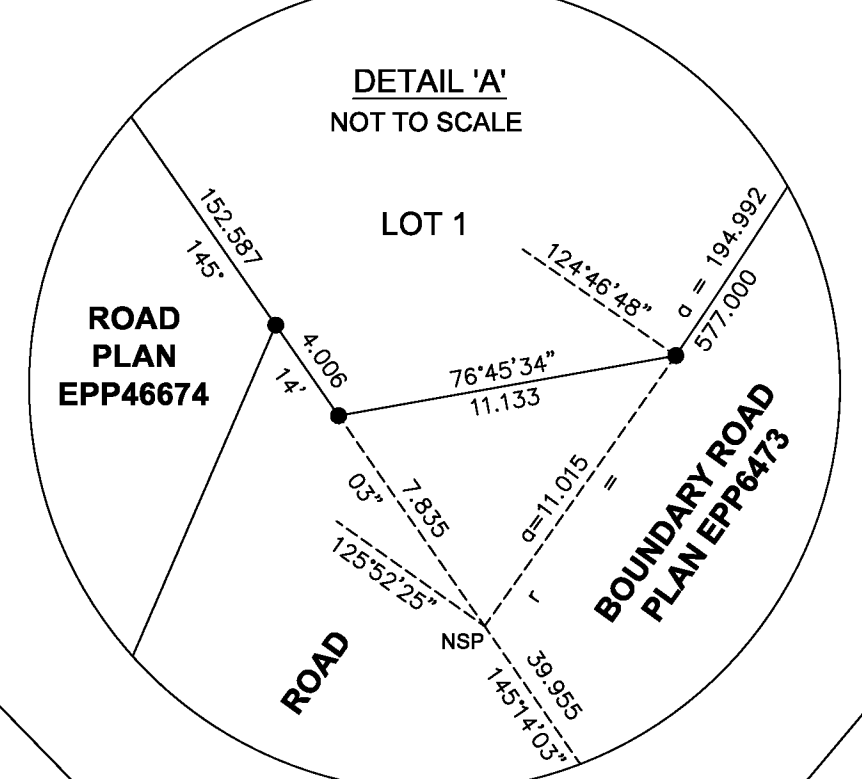
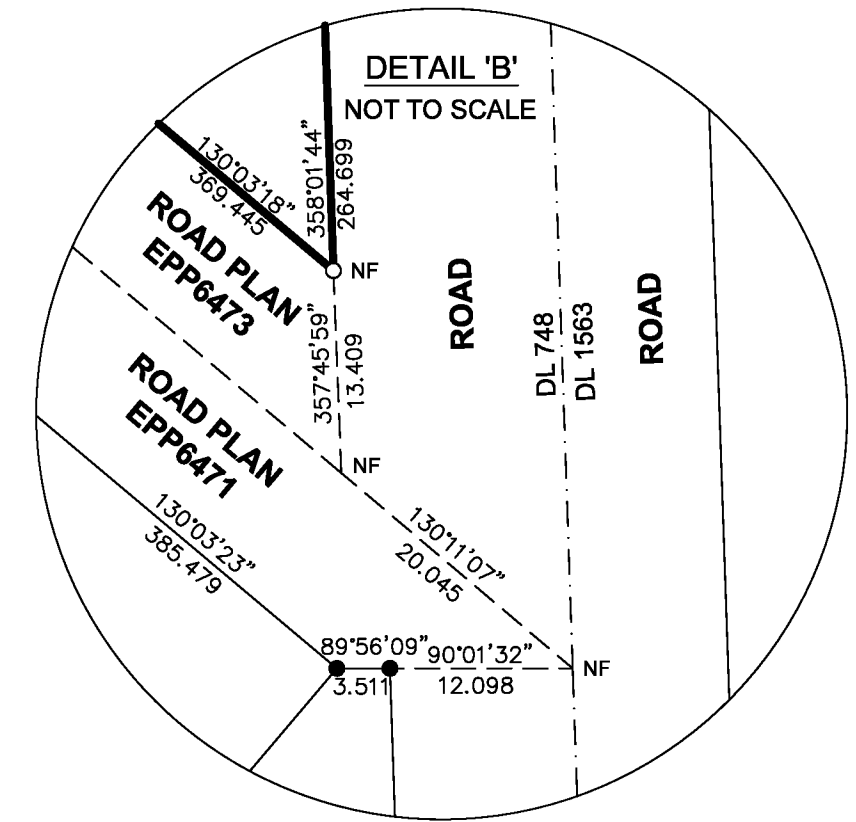
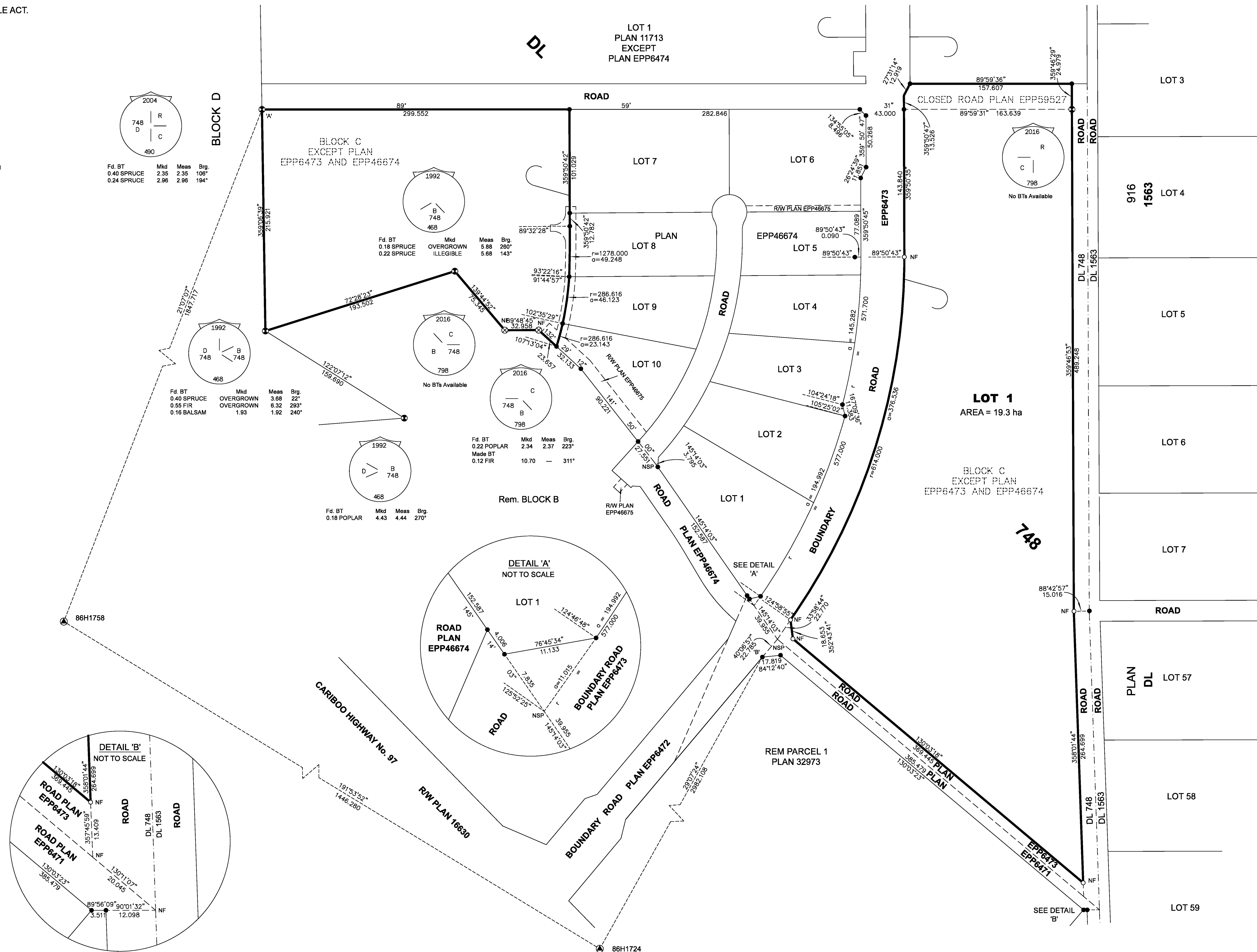
LEGEND:

SYMBOLS DESCRIPTION

- | FOUND | PLACED | DESCRIPTION |
|-------|--------|----------------------|
| ⊙ | ⊙ | CONTROL MONUMENT |
| ⊗ | ⊗ | STANDARD CAPPED POST |
| ● | ○ | STANDARD IRON POST |

NOTE:
BEARINGS TO BEARING TREES ARE MAGNETIC.
SOME POSTS ARE EXAGGERATED FOR CLARITY.

GEOREFERENCING POSITIONS			
UTM COORDINATES, ZONE 10, NAD83(CSR8), EPOCH V 4.0.0.BC.1			
POINT	NORTHING (m)	EASTING (m)	ESTIMATED HORIZONTAL POSITIONAL ACCURACY
Fd.CP 'A'	5968306.82	518535.99	0.05m
Fd.IP 'B'	5967773.36	519023.21	0.05m



THE FIELD SURVEY REPRESENTED BY THIS PLAN WAS COMPLETED ON THE 12TH DAY OF APRIL, 2016
SHAUNA C. GOERTZEN, BOLS 798

THIS PLAN LIES WITHIN THE REGIONAL DISTRICT OF FRASER-FORT GEORGE.

McElhanney
McELHANNAY ASSOCIATES
LAND SURVEYING LTD.
Suite 12
558 North Nechako Road
Prince George BC
Canada V2K 1A1
Tel 250 561 2229
File No. 2341-6402-CON

Filed PG EPP60445 EPP60445 146-672-0273 RC/V/D:2017-02-10 ROST:2017-02-23 03:10 PRINCE GEORGE ASSESSMENT AUTHORITY - MARTIN NEWBY CONSULTING LTD. (MNC)