

STATUTORY RIGHT OF WAY PLAN OVER PART OF LOT A, DISTRICT LOT 754, CARIBOO DISTRICT, PLAN EPP53689.

PLAN EPP60139

PURSUANT TO SECTION 113 OF THE LAND TITLE ACT.

INTEGRATED SURVEY AREA No. 39 PRINCE GEORGE, BC
BCGS 93G.087



THE INTENDED PLOT SIZE OF THIS PLAN IS 432MM IN WIDTH BY 280MM IN HEIGHT (B SIZE) WHEN PLOTTED AT A SCALE OF 1:100.

ALL DISTANCES ARE IN METRES AND DECIMALS THEREOF.

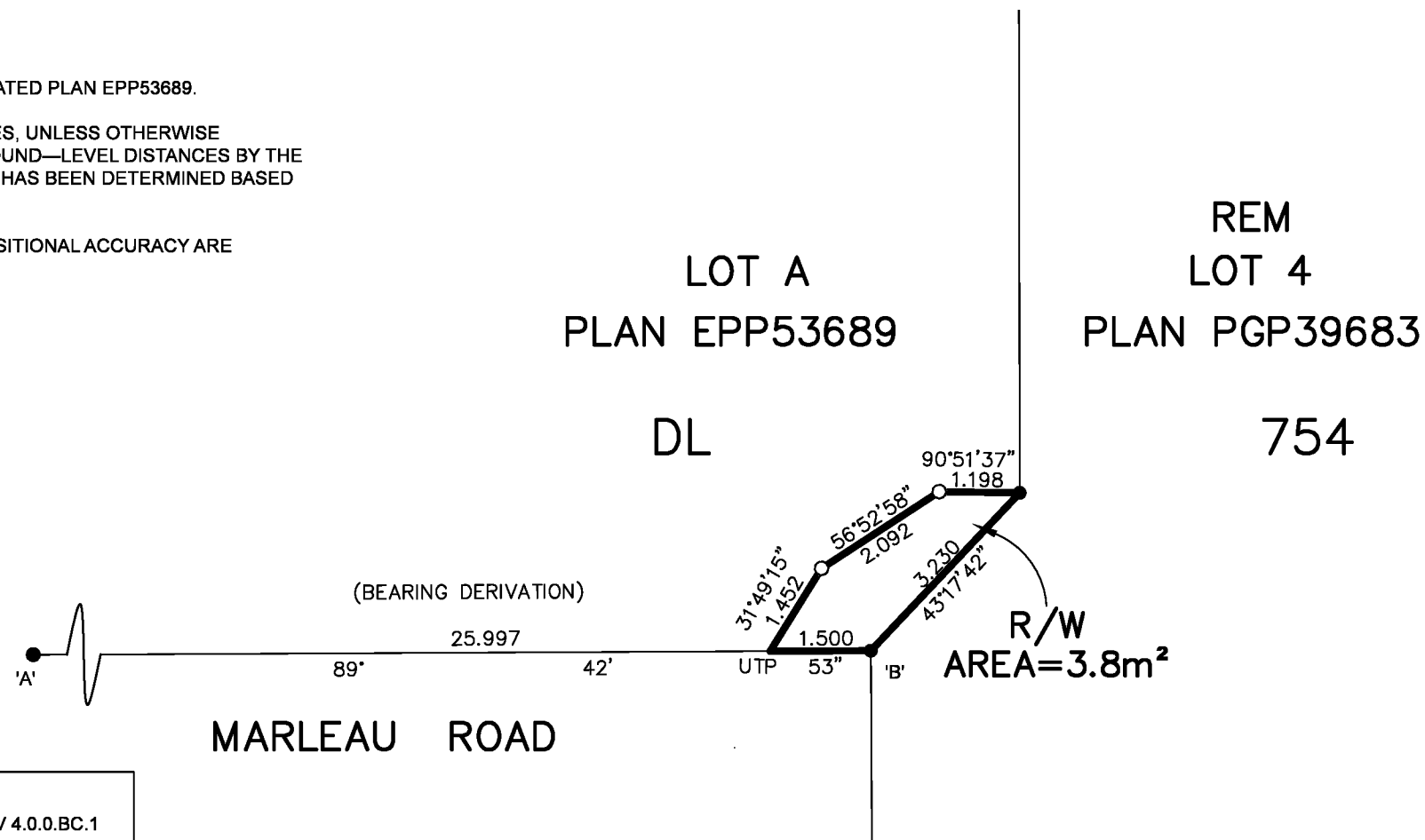
GRID BEARINGS ARE DERIVED FROM PREVIOUSLY INTEGRATED PLAN EPP53689.

THIS PLAN SHOWS HORIZONTAL GROUND-LEVEL DISTANCES, UNLESS OTHERWISE SPECIFIED. TO COMPUTE GRID DISTANCES, MULTIPLY GROUND-LEVEL DISTANCES BY THE COMBINED FACTOR OF 0.9995089. THE COMBINED FACTOR HAS BEEN DETERMINED BASED ON PLAN EPP53689.

THE UTM COORDINATES AND ESTIMATED HORIZONTAL POSITIONAL ACCURACY ARE DERIVED FROM PLAN EPP53689.

LEGEND:

SYMBOLS		DESCRIPTION
FOUND	PLACED	
●	○	STANDARD IRON POST
UTP		UNSUITABLE TO POST



GEOREFERENCING POSITIONS			
UTM COORDINATES, ZONE 10, NAD83(CSRS), EPOCH V 4.0.0.BC.1			
STATION	NORTHING	EASTING	ESTIMATED HORIZONTAL POSITIONAL ACCURACY
Fd.IP'A'	5968206.69	515170.73	0.05m
Fd.IP'B'	5968206.83	515198.21	0.05m

THE FIELD SURVEY REPRESENTED BY THIS PLAN WAS COMPLETED ON THE 25th DAY OF FEBRUARY, 2016.
SHAUNA C. GOERTZEN, BCLS 798

THIS PLAN LIES WITHIN THE REGIONAL DISTRICT OF FRASER-FORT GEORGE

McElhanney
McELHANNEY ASSOCIATES
LAND SURVEYING LTD.
Suite 12
556 North Nechako Road
Prince George BC
Canada V2K 1A1
Tel 250 561 2229

File No. 2341-6016-2012-RW
ECR No. 184140