

# REFERENCE PLAN OF CONSOLIDATION OF LOT 1 AND LOT 6, BLOCK 2, DISTRICT LOT 2611, CARIBOO DISTRICT, PLAN 1437.

PLAN EPP59666

PURSUANT TO SECTION 100(1)(b) OF THE LAND TITLE ACT.

INTEGRATED SURVEY AREA No. 39 PRINCE GEORGE, BC

BCGS 93G.097



THE INTENDED PLOT SIZE OF THIS PLAN IS 560 mm IN WIDTH BY 432 mm IN HEIGHT (C SIZE) WHEN PLOTTED AT A SCALE OF 1500.

ALL DISTANCES ARE IN METRES AND DECIMALS THEREOF.

GRID BEARINGS ARE DERIVED FROM OBSERVATIONS BETWEEN GEODETIC CONTROL MONUMENTS 85H1188 AND 85H1169.

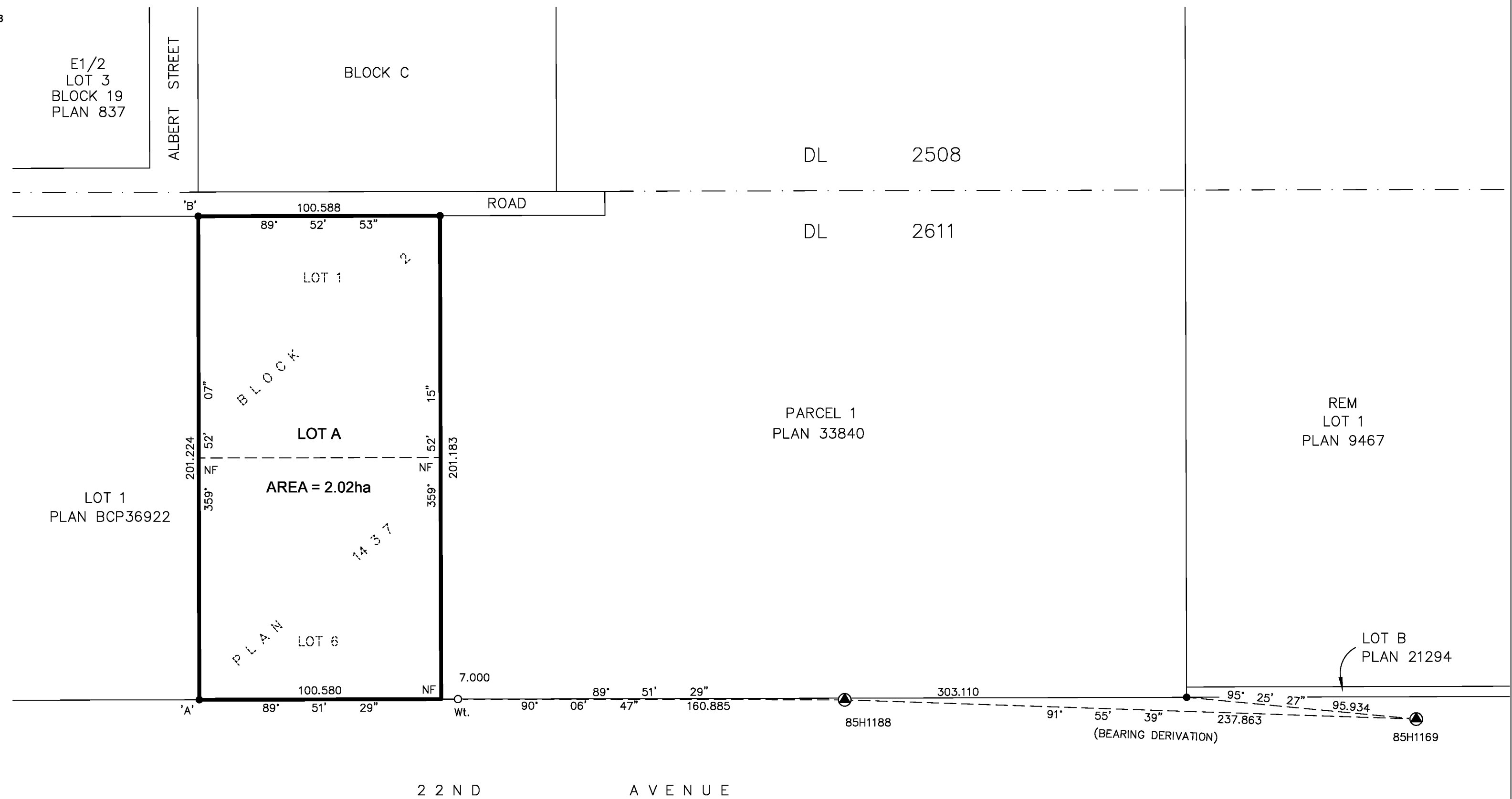
THIS PLAN SHOWS HORIZONTAL GROUND-LEVEL DISTANCES UNLESS OTHERWISE SPECIFIED. TO COMPUTE GRID DISTANCES, MULTIPLY GROUND-LEVEL DISTANCES BY THE AVERAGE COMBINED FACTOR OF 0.9995097 WHICH HAS BEEN DERIVED FROM CONTROL MONUMENTS 85H1188 AND 85H1169.

THE UTM COORDINATES AND ESTIMATED HORIZONTAL POSITIONAL ACCURACY ACHIEVED HAVE BEEN DERIVED FROM MASCOT PUBLISHED COORDINATES AND STANDARD DEVIATIONS FOR GEODETIC CONTROL MONUMENT 85H1188.

### LEGEND:

SYMBOLS		DESCRIPTION
FOUND	PLACED	
		CONTROL MONUMENT
		STANDARD IRON POST

NOTE:  
THIS PLAN SHOWS ONE OR MORE WITNESS POSTS WHICH ARE NOT SET ON THE TRUE CORNER(S).



GEOREFERENCING POSITIONS			
UTM COORDINATES, ZONE 10, NAD83(CSRS), EPOCH V 4.0.0.BC.1			
STATION	NORTHING	EASTING	ESTIMATED HORIZONTAL POSITIONAL ACCURACY
Fd.IP 'A'	5972757.99	512726.56	0.05m
Fd.IP 'B'	5972556.87	512727.02	0.05m

THE FIELD SURVEY REPRESENTED BY THIS PLAN WAS COMPLETED ON THE 1ST DAY OF FEBRUARY, 2016  
SHAUNA C. GOERTZEN, BCLS 798

THIS PLAN LIES WITHIN THE REGIONAL DISTRICT OF FRASER-FORT GEORGE

**McElhanney**  
McELHANNEY ASSOCIATES  
LAND SURVEYING LTD.  
Suite 12  
556 North Nechako Road  
Prince George BC  
Canada V2K 1A1  
Tel 250 561 2229

File No. 2341-6404-C  
ECR No. 183606