

REFERENCE PLAN OF PART OF LOT 1, DISTRICT LOT 748, CARIBOO DISTRICT, PLAN 11713, EXCEPT PLAN EPP6474.

PLAN EPP59528

PURSUANT TO SECTION 107 OF THE LAND TITLE ACT.
FOR ROAD DEDICATION

INTEGRATED SURVEY AREA No. 39 PRINCE GEORGE, BC
BCGS 093G.087



THE INTENDED PLOT SIZE OF THIS PLAN IS 560 mm IN WIDTH BY 432 mm IN HEIGHT (C SIZE) WHEN PLOTTED AT A SCALE OF 1:750.

ALL DISTANCES ARE IN METRES AND DECIMALS THEREOF.

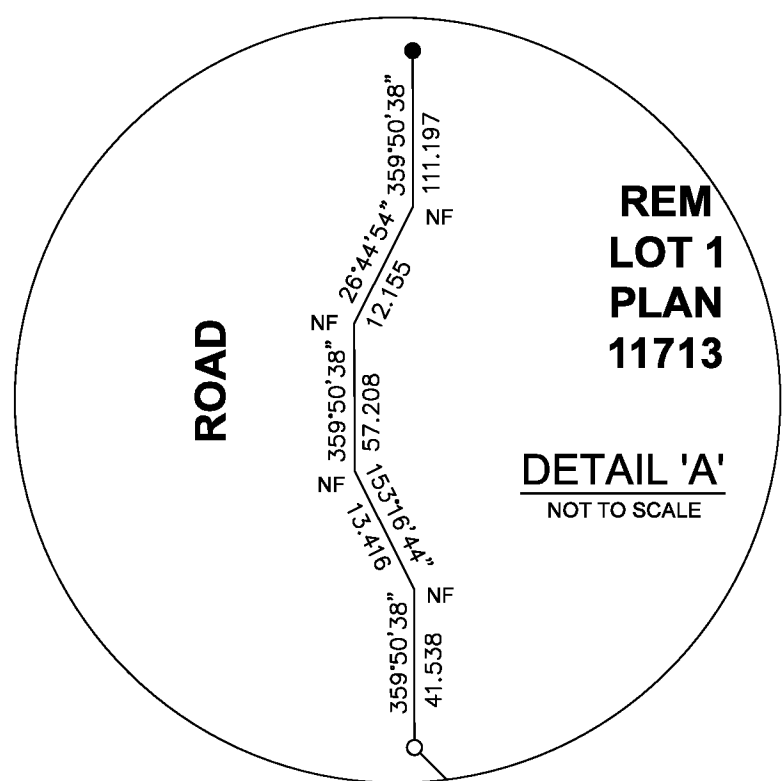
GRID BEARINGS ARE DERIVED FROM OBSERVATIONS BETWEEN GEODETIC CONTROL MONUMENTS 86H1724 AND 86H1758.

THIS PLAN SHOWS HORIZONTAL GROUND-LEVEL DISTANCES UNLESS OTHERWISE SPECIFIED. TO COMPUTE GRID DISTANCES, MULTIPLY GROUND-LEVEL DISTANCES BY THE COMBINED FACTOR OF 0.9995014 WHICH HAS BEEN DERIVED BY SINGLE POINT POSITIONING TECHNIQUES USING THE PRECISE POINT POSITIONING (PPP) SERVICE OF NATURAL RESOURCES CANADA.

THE UTM COORDINATES AND ESTIMATED HORIZONTAL POSITIONAL ACCURACY ACHIEVED HAVE BEEN DERIVED FROM MASCOT PUBLISHED COORDINATES AND STANDARD DEVIATIONS FOR GEODETIC CONTROL MONUMENT 86H1724.

LEGEND:

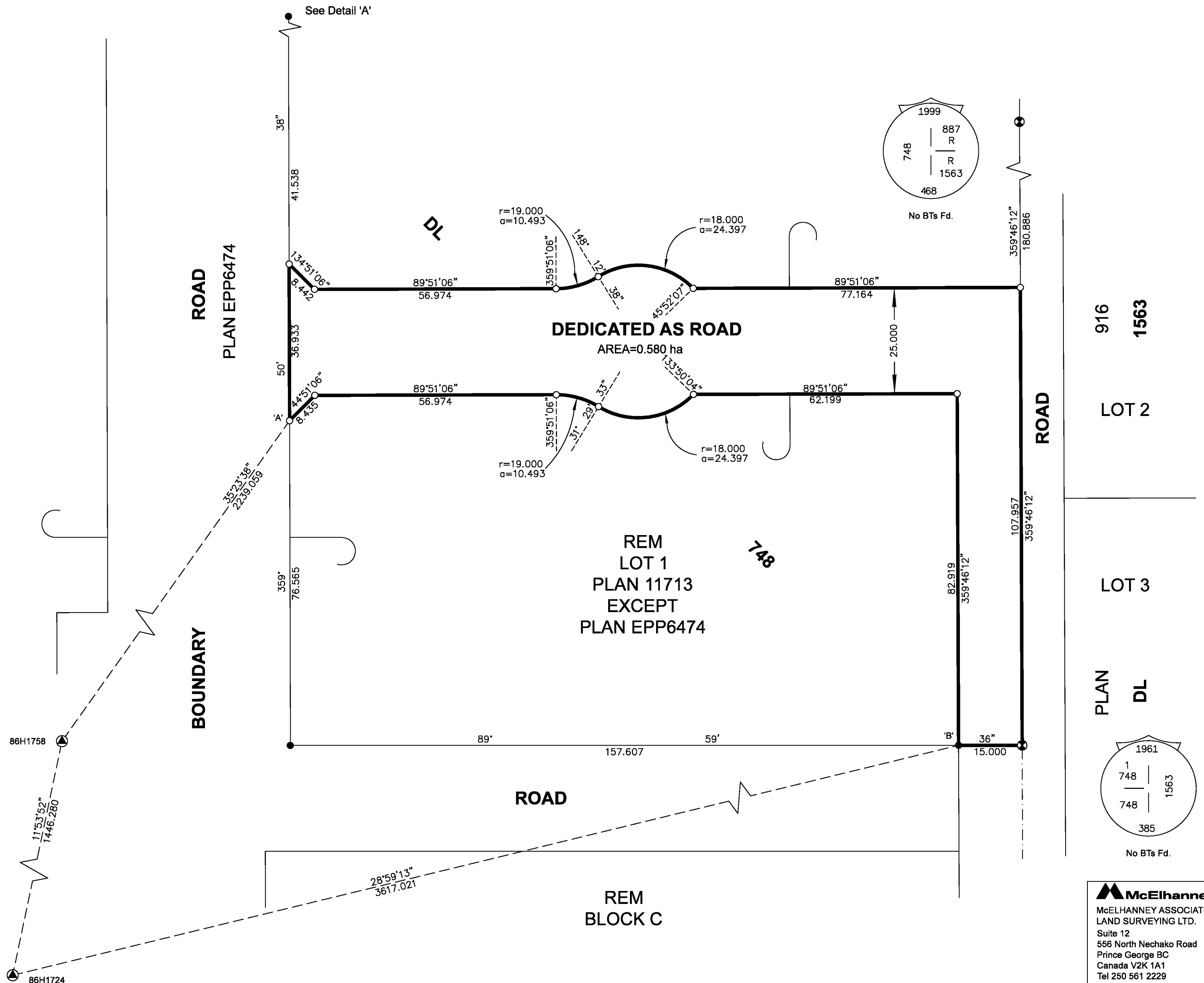
SYMBOLS	DESCRIPTION
FOUND	PLACED
	CONTROL MONUMENT
	STANDARD CAPPED POST
	STANDARD IRON POST



GEOREFERENCING POSITIONS			
UTM COORDINATES, ZONE 10, NAD83(CSRS), EPOCH V 4.0.0.BC.1			
POINT	NORTHING (m)	EASTING (m)	ESTIMATED HORIZONTAL POSITIONAL ACCURACY
Fd.IP'A'	5968408.41	519166.80	0.05m
Fd.IP'B'	5968331.90	519324.54	0.05m

THE FIELD SURVEY REPRESENTED BY THIS PLAN WAS COMPLETED ON THE 23rd DAY OF FEBRUARY, 2016.
SHAUNA C. GOERTZEN, BCLS 798

THIS PLAN LIES WITHIN THE JURISDICTION OF THE APPROVING OFFICER FOR THE CITY OF PRINCE GEORGE.



916
1563

LOT 2

LOT 3

PLAN
DL

McElhanney
McELHANNEY ASSOCIATES
LAND SURVEYING LTD.
Suite 12
556 North Nechako Road
Prince George BC
Canada V2K 1A1
Tel 250 561 2229

File No. 2341-6402-RD
ECR No. 184044

THIS PLAN LIES WITHIN THE REGIONAL DISTRICT OF FRASER-FORT GEORGE