

PLAN EPP59003

EXPLANATORY PLAN OF EASEMENT OVER PART OF LOT 3, DISTRICT LOT 753, CARIBOO DISTRICT, PLAN 11766, EXCEPT PLAN 21569.

PURSUANT TO SECTION 99(1)(e) OF THE LAND TITLE ACT.
FOR EASEMENT PURPOSES

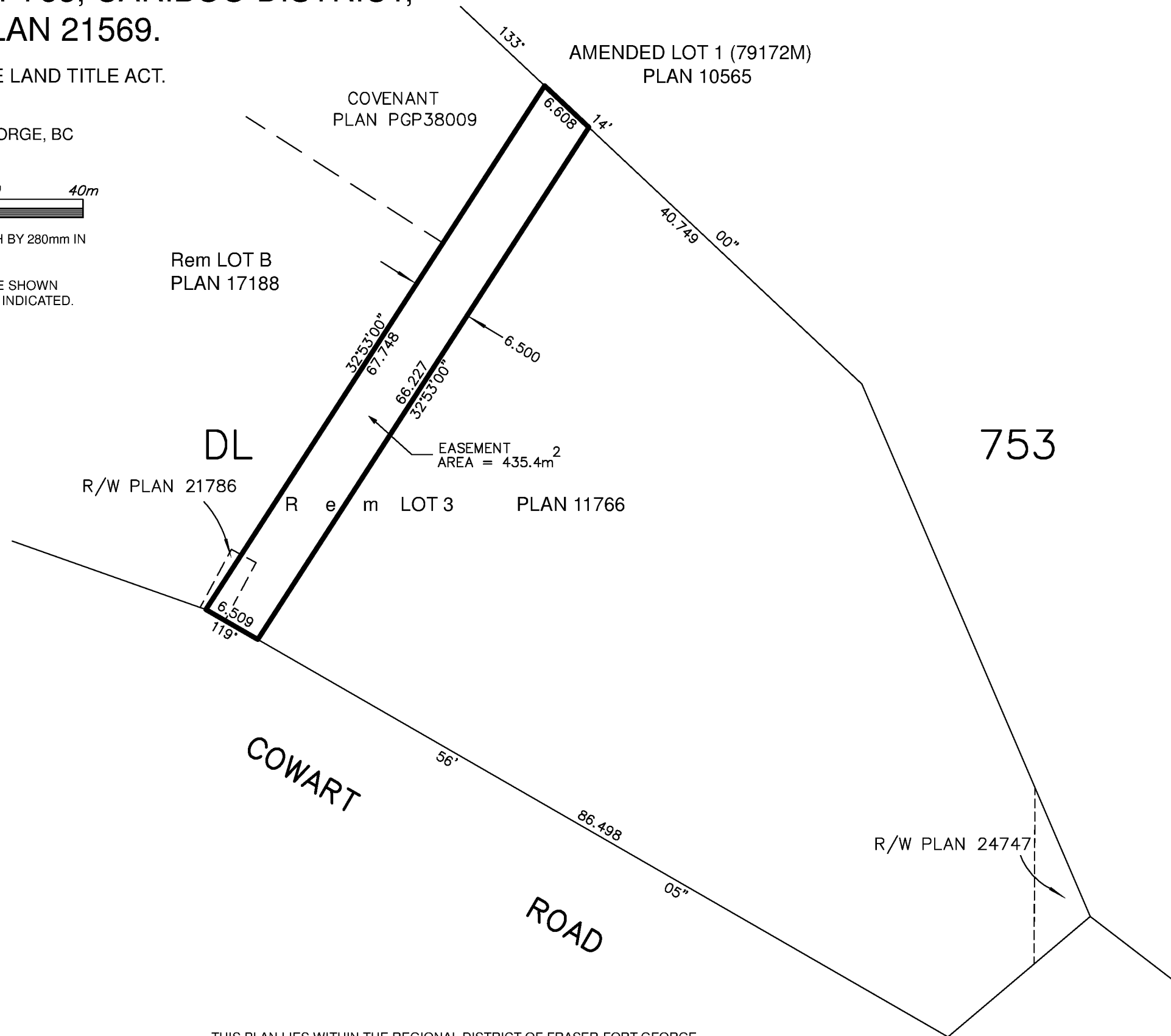
INTEGRATED SURVEY AREA No. 39 PRINCE GEORGE, BC
BCGS 93G.087



THE INTENDED PLOT SIZE OF THIS PLAN IS 432mm IN WIDTH BY 280mm IN HEIGHT (B SIZE) WHEN PLOTTED AT A SCALE OF 1:500.

ALL DISTANCES ARE HORIZONTAL GROUND-LEVEL AND ARE SHOWN IN METRES AND DECIMALS THEREOF, UNLESS OTHERWISE INDICATED.

BEARINGS ARE ASTRONOMIC DERIVED FROM PLAN 11766.



THIS PLAN IS BASED ON THE FOLLOWING LAND TITLE AND SURVEY AUTHORITY OF BC RECORDS:
PLAN 21569
PLAN 11766

DARREN KENT, BCLS 904
5th DAY OF APRIL, 2016.

THIS PLAN LIES WITHIN THE REGIONAL DISTRICT OF FRASER-FORT GEORGE

McElhanney
McELHANNEY ASSOCIATES
LAND SURVEYING LTD.
Suite 12
556 North Nechako Road
Prince George BC
Canada V2K 1A1
Tel 250 561 2229

File No. 2341-6419-E