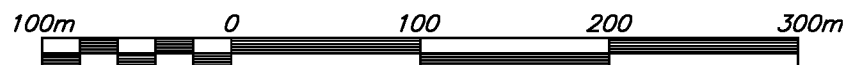


# REFERENCE PLAN OF CONSOLIDATION OF LOT 13 AND LOT 14, BLOCK 5, PLAN 1153 AND LOT A, PLAN EPP58995, ALL IN DISTRICT LOT 3683, CARIBOO DISTRICT.

PLAN EPP58996

PURSUANT TO SECTION 100(1)(b) OF THE LAND TITLE ACT.  
BCGS 936.096

THE INTENDED PLOT SIZE OF THIS PLAN IS 432mm IN WIDTH BY 560mm IN HEIGHT (C SIZE) WHEN PLOTTED AT A SCALE OF 1:4000



ALL DISTANCES ARE SHOWN IN METRES AND DECIMALS THEREOF, UNLESS OTHERWISE INDICATED.

**LEGEND**

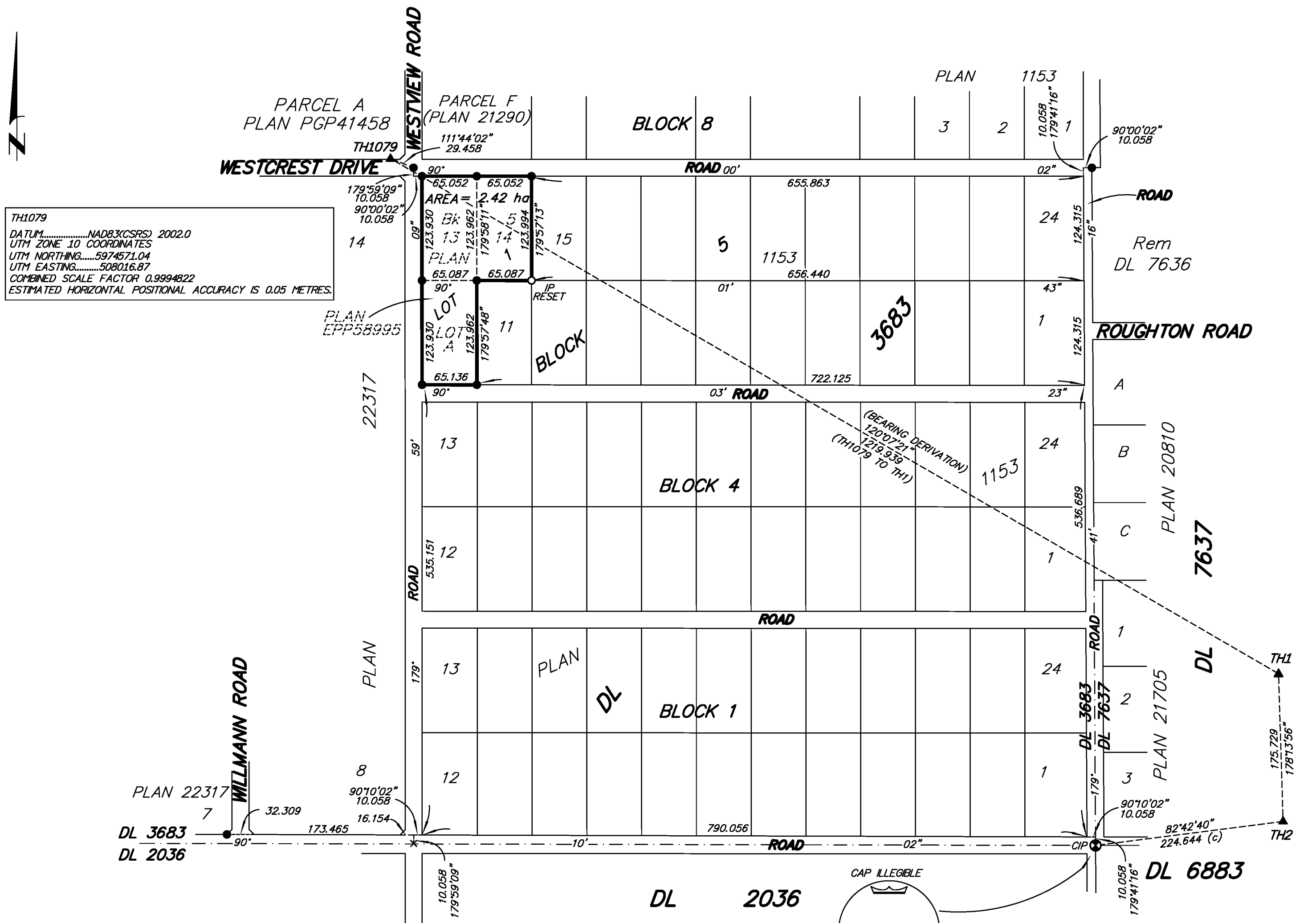
- ⊗ DENOTES STANDARD CAPPED POST FOUND
- DENOTES STANDARD IRON POST FOUND
- DENOTES STANDARD IRON POST PLACED
- × DENOTES CALCULATED POINT
- ▲ DENOTES TRAVERSE HUB FOUND (TH #)

BEARINGS TO BEARING TREES ARE MAGNETIC.

THIS PLAN SHOWS HORIZONTAL GROUND-LEVEL DISTANCES, UNLESS OTHERWISE SPECIFIED. TO COMPUTE GRID DISTANCES, MULTIPLY GROUND-LEVEL DISTANCES BY THE AVERAGE COMBINED FACTOR OF 0.9994822. THE AVERAGE COMBINED FACTOR HAS BEEN DETERMINED BASED ON AN ELLIPSOIDAL ELEVATION OF 756.27 METRES.

GRID BEARINGS ARE DERIVED FROM GNSS DUAL FREQUENCY OBSERVATIONS AND ARE REFERRED TO THE CENTRAL MERIDIAN OF UTM ZONE 10.

THE UTM COORDINATES AND ESTIMATED HORIZONTAL POSITIONAL ACCURACY ACHIEVED ARE DERIVED FROM GNSS DUAL FREQUENCY OBSERVATIONS PROCESSED USING NATURAL RESOURCES CANADA'S PRECISE POINT POSITIONING SERVICE.



TH1079  
DATUM.....NAD83(CSRS) 2002.0  
UTM ZONE 10 COORDINATES  
UTM NORTHING.....5974571.04  
UTM EASTING.....508016.87  
COMBINED SCALE FACTOR 0.9994822  
ESTIMATED HORIZONTAL POSITIONAL ACCURACY IS 0.05 METRES.

TH2  
DATUM.....NAD83(CSRS) 2002.0  
UTM ZONE 10 COORDINATES  
UTM NORTHING.....5973783.58  
UTM EASTING.....509076.94  
COMBINED SCALE FACTOR 0.9994776  
ESTIMATED HORIZONTAL POSITIONAL ACCURACY IS 0.05 METRES.

Fd. BTs	Mkd. Meas
0.30 SPRUCE	9° 10.54 10.54
0.13 ALDER	56° 5.22 5.22
0.28 BRCH	214° 6.72 6.70

THE FIELD SURVEY REPRESENTED BY THIS PLAN WAS COMPLETED ON THE 22nd DAY OF JANUARY, 2016.  
DARREN KENT, BCLS 904

THIS PLAN LIES WITHIN THE REGIONAL DISTRICT OF FRASER - FORT GEORGE.

**McElhanney**  
McElhanney Associates  
Land Surveying Ltd.  
Prince George, B.C.  
E-mail: pgmats@mcelhanney.com  
Ph: (250) 561-2229

DL - 3683	File No. - 6387-C
FILE No. 7409790	