

REFERENCE PLAN OF LOT 12, BLOCK 5, DISTRICT LOT 3683, CARIBOO DISTRICT, PLAN 1153.

PLAN EPP58995

PURSUANT TO SECTION 100(1)(a) OF THE LAND TITLE ACT.

BCGS 936.096

THE INTENDED PLOT SIZE OF THIS PLAN IS 432mm IN WIDTH BY 560mm IN HEIGHT (C SIZE) WHEN PLOTTED AT A SCALE OF 1:4000



ALL DISTANCES ARE SHOWN IN METRES AND DECIMALS THEREOF, UNLESS OTHERWISE INDICATED.

LEGEND

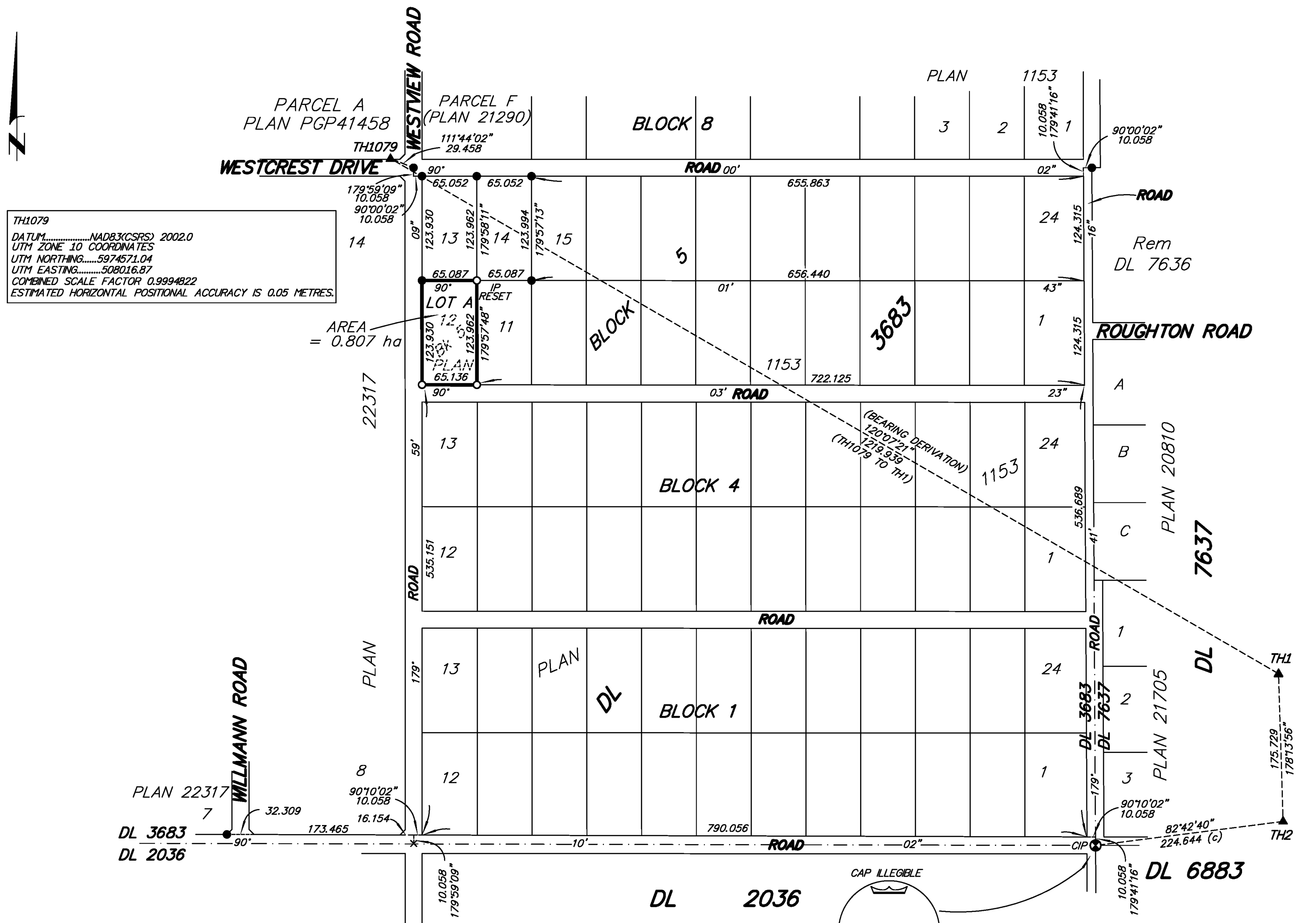
- ⊗ DENOTES STANDARD CAPPED POST FOUND
- DENOTES STANDARD IRON POST FOUND
- DENOTES STANDARD IRON POST PLACED
- x DENOTES CALCULATED POINT
- ▲ DENOTES TRAVERSE HUB FOUND (TH #)

BEARINGS TO BEARING TREES ARE MAGNETIC.

THIS PLAN SHOWS HORIZONTAL GROUND-LEVEL DISTANCES, UNLESS OTHERWISE SPECIFIED. TO COMPUTE GRID DISTANCES, MULTIPLY GROUND-LEVEL DISTANCES BY THE AVERAGE COMBINED FACTOR OF 0.9994822. THE AVERAGE COMBINED FACTOR HAS BEEN DETERMINED BASED ON AN ELLIPSOIDAL ELEVATION OF 756.27 METRES.

GRID BEARINGS ARE DERIVED FROM GNSS DUAL FREQUENCY OBSERVATIONS AND ARE REFERRED TO THE CENTRAL MERIDIAN OF UTM ZONE 10.

THE UTM COORDINATES AND ESTIMATED HORIZONTAL POSITIONAL ACCURACY ACHIEVED ARE DERIVED FROM GNSS DUAL FREQUENCY OBSERVATIONS PROCESSED USING NATURAL RESOURCES CANADA'S PRECISE POINT POSITIONING SERVICE.



TH1079
 DATUM.....NAD83(CSRS) 2002.0
 UTM ZONE 10 COORDINATES
 UTM NORTHING.....5974571.04
 UTM EASTING.....508016.87
 COMBINED SCALE FACTOR 0.9994822
 ESTIMATED HORIZONTAL POSITIONAL ACCURACY IS 0.05 METRES.

TH2
 DATUM.....NAD83(CSRS) 2002.0
 UTM ZONE 10 COORDINATES
 UTM NORTHING.....5973783.58
 UTM EASTING.....508076.94
 COMBINED SCALE FACTOR 0.9994776
 ESTIMATED HORIZONTAL POSITIONAL ACCURACY IS 0.05 METRES.

Fd. BTs	Mkd. Meas
0.30 SPRUCE 9°	10.54 10.54
0.13 ALDER 56°	5.22 5.22
0.28 BRCH 21°	6.72 6.70

THIS PLAN IS PREPARED AS THE OFFICIAL PLAN OF THE LANDS SHOWN HEREON FOR THE SURVEYOR GENERAL

THE FIELD SURVEY REPRESENTED BY THIS PLAN WAS COMPLETED ON THE 22nd DAY OF JANUARY, 2016. DARREN KENT, BCLS 904

THIS PLAN LIES WITHIN THE REGIONAL DISTRICT OF FRASER - FORT GEORGE.

McElhanney
 McElhanney Associates
 Land Surveying Ltd.
 Prince George, B.C.
 E-mail: pgmats@mcelhanney.com
 Ph: (250) 561-2229

DL - 3683	File No. - 6387-REF
FILE No. 7409790	