

# REFERENCE PLAN OF EASEMENT OVER PART OF LOTS 24 AND 25, DISTRICT LOT 4377, CARIBOO DISTRICT, PLAN 1329

## PLAN EPP58501

PURSUANT TO SECTION 99(1)(e) OF THE LAND TITLE ACT  
INTEGRATED SURVEY AREA NUMBER 39, PRINCE GEORGE, NAD83(CSRS)

BCGS 93G.097



THE INTENDED PLOT SIZE OF THIS PLAN IS 432mm IN WIDTH BY 560mm IN HEIGHT (C SIZE) WHEN PLOTTED AT A SCALE OF 1:750

ALL DISTANCES ARE HORIZONTAL GROUND-LEVEL AND ARE SHOWN IN METRES AND DECIMALS THEREOF, UNLESS OTHERWISE INDICATED.

GRID BEARINGS ARE DERIVED FROM GNSS OBSERVATIONS BETWEEN GEODETTIC CONTROL MONUMENTS 86H1568 AND 86H1527

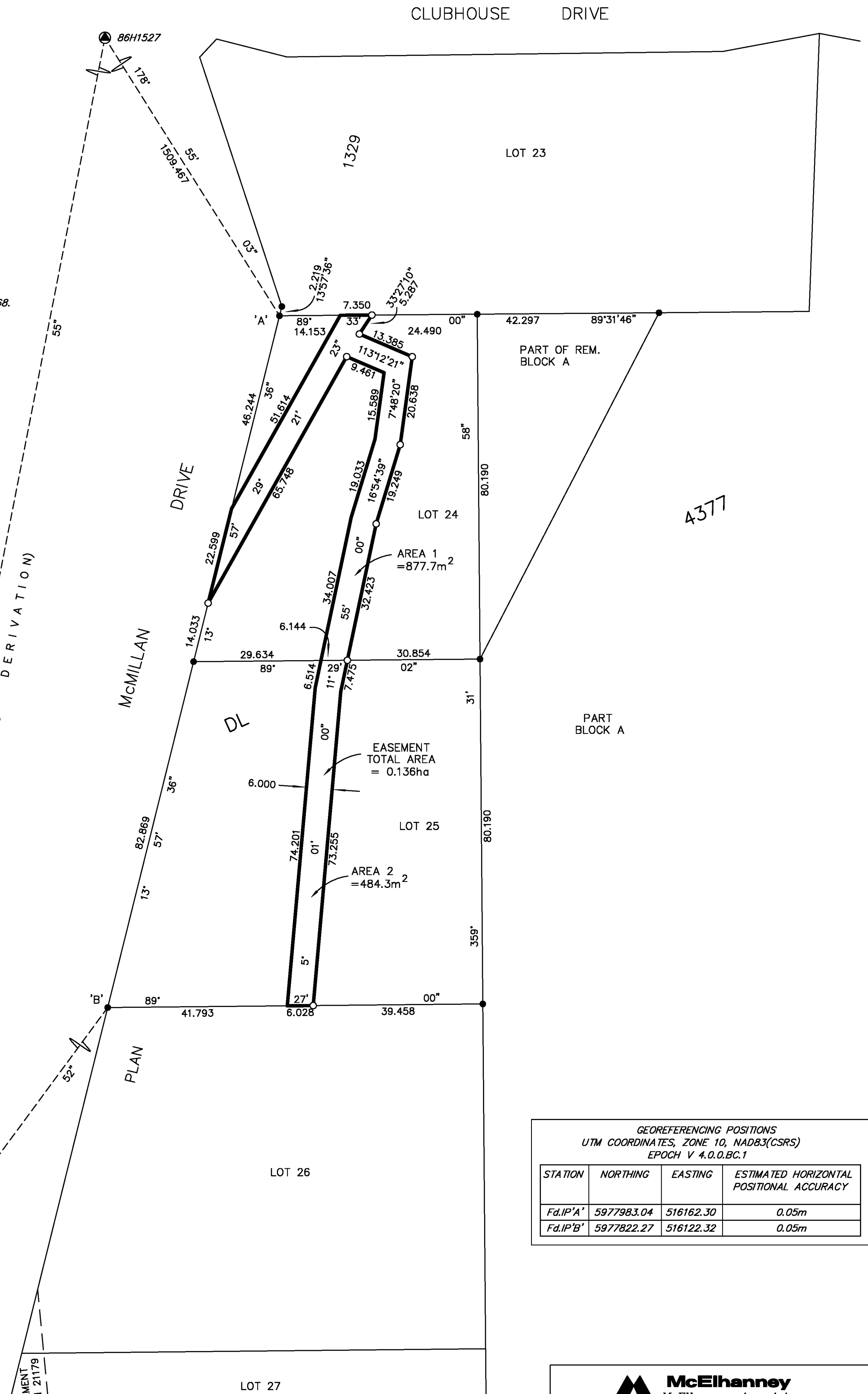
THIS PLAN SHOWS HORIZONTAL GROUND-LEVEL DISTANCES UNLESS OTHERWISE SPECIFIED. TO COMPUTE GRID DISTANCES, MULTIPLY GROUND-LEVEL DISTANCES BY THE AVERAGE COMBINED FACTOR OF 0.9995043. THE AVERAGE COMBINED FACTOR HAS BEEN DERIVED FROM GEODETTIC CONTROL MONUMENTS 86H1568 AND 86H1527.

THE UTM COORDINATES AND ESTIMATED HORIZONTAL POSITIONAL ACCURACY ARE DERIVED FROM THE MASCOT PUBLISHED COORDINATES AND STANDARD DEVIATIONS FOR GEODETTIC CONTROL MONUMENT 86H1568.

### LEGEND

- GEODETTIC CONTROL MONUMENT
- STANDARD IRON POST FOUND
- STANDARD IRON POST PLACED

BOOK OF REFERENCE	
DESCRIPTION	AREA
LOT 24, PLAN 1329	877.7m <sup>2</sup>
LOT 25, PLAN 1329	484.3m <sup>2</sup>
TOTAL	0.136ha



GEOREFERENCING POSITIONS UTM COORDINATES, ZONE 10, NAD83(CSRS) EPOCH V 4.0.0.BC.1			
STATION	NORTHING	EASTING	ESTIMATED HORIZONTAL POSITIONAL ACCURACY
Fd.IP'A'	5977983.04	516162.30	0.05m
Fd.IP'B'	5977822.27	516122.32	0.05m

THE FIELD SURVEY REPRESENTED BY THIS PLAN  
WAS COMPLETED ON THE 23rd DAY OF DECEMBER, 2015.  
SHAUNA C. GOERTZEN, BCLS 798

**McElhanney**  
McElhanney Associates  
Land Surveying Ltd.  
Prince George, B.C.  
E-mail: pgmats@mcelhanney.com  
Ph: (250) 561-2229