

# REFERENCE PLAN OF EASEMENT OVER PART OF LOT 23, EXCEPT PLAN EPP4750, LOTS 24, 25 AND 26, ALL IN DISTRICT LOT 4377, CARIBOO DISTRICT, PLAN 1329

PLAN EPP58500

PURSUANT TO SECTION 99(1)(e) OF THE LAND TITLE ACT  
INTEGRATED SURVEY AREA NUMBER 39, PRINCE GEORGE, NAD83(CSRS)

BCGS 93G.097



THE INTENDED PLOT SIZE OF THIS PLAN IS 432mm IN WIDTH BY 560mm IN HEIGHT (C SIZE) WHEN PLOTTED AT A SCALE OF 1:750

ALL DISTANCES ARE HORIZONTAL GROUND-LEVEL AND ARE SHOWN IN METRES AND DECIMALS THEREOF, UNLESS OTHERWISE INDICATED.

GRID BEARINGS ARE DERIVED FROM GNSS OBSERVATIONS BETWEEN GEODETIC CONTROL MONUMENTS 86H1568 AND 86H1527

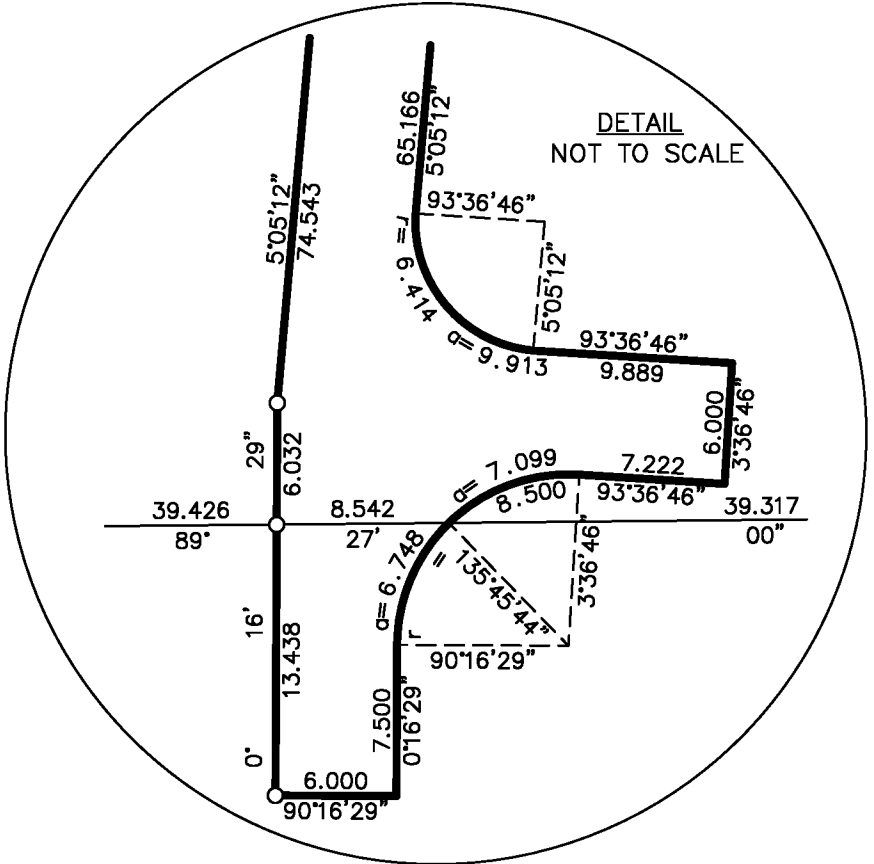
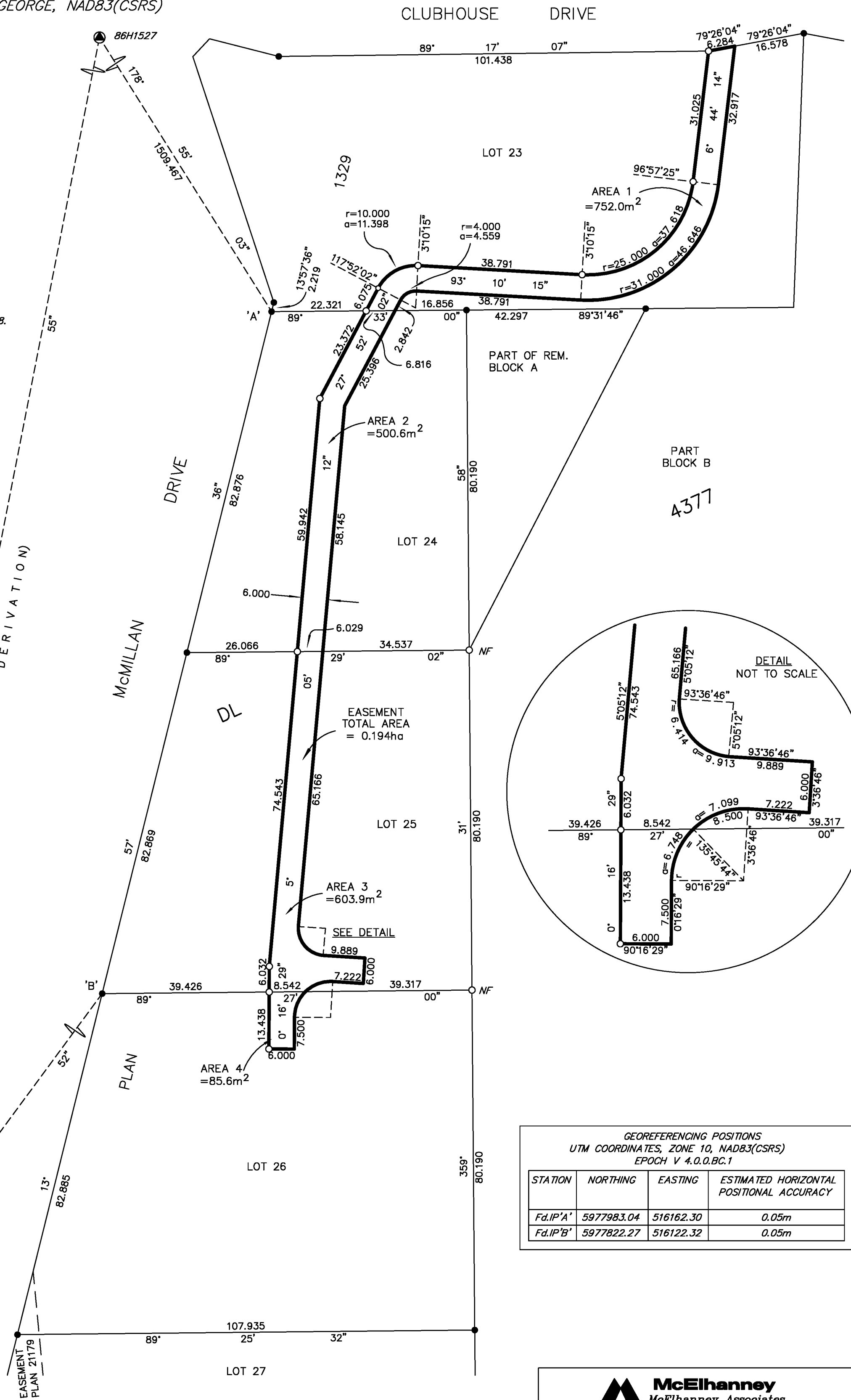
THIS PLAN SHOWS HORIZONTAL GROUND-LEVEL DISTANCES UNLESS OTHERWISE SPECIFIED. TO COMPUTE GRID DISTANCES, MULTIPLY GROUND-LEVEL DISTANCES BY THE AVERAGE COMBINED FACTOR OF 0.9995043. THE AVERAGE COMBINED FACTOR HAS BEEN DERIVED FROM GEODETIC CONTROL MONUMENTS 86H1568 AND 86H1527.

THE UTM COORDINATES AND ESTIMATED HORIZONTAL POSITIONAL ACCURACY ARE DERIVED FROM THE MASCOT PUBLISHED COORDINATES AND STANDARD DEVIATIONS FOR GEODETIC CONTROL MONUMENT 86H1568.

**LEGEND**

- GEODETIC CONTROL MONUMENT
- STANDARD IRON POST FOUND
- STANDARD IRON POST PLACED

BOOK OF REFERENCE	
DESCRIPTION	AREA
LOT 23, PLAN 1329 EXCEPT PLAN EPP4750	752.0m <sup>2</sup>
LOT 24, PLAN 1329	500.6m <sup>2</sup>
LOT 25, PLAN 1329	603.9m <sup>2</sup>
LOT 26, PLAN 1329	85.6m <sup>2</sup>
TOTAL	0.194ha



GEOREFERENCING POSITIONS  
UTM COORDINATES, ZONE 10, NAD83(CSRS)  
EPOCH V 4.0.0.BC.1

STATION	NORTHING	EASTING	ESTIMATED HORIZONTAL POSITIONAL ACCURACY
Fd.IP'A'	5977983.04	516162.30	0.05m
Fd.IP'B'	5977822.27	516122.32	0.05m

**McElhanney**  
McElhanney Associates  
Land Surveying Ltd.  
Prince George, B.C.  
E-mail: pgmals@mcElhanney.com  
Ph: (250) 561-2229

THE FIELD SURVEY REPRESENTED BY THIS PLAN WAS COMPLETED ON THE 23rd DAY OF DECEMBER, 2015.  
SHAUNA C. GOERTZEN, BCLS 798

THIS PLAN LIES WITHIN THE REGIONAL DISTRICT OF FRASER-FORT GEORGE.