

SUBDIVISION PLAN OF PART OF THE MOST SOUTHERLY 15 CHAINS OF BLOCK B AS MEASURED ALONG THE EASTERLY BOUNDARY THEREOF DISTRICT LOT 4376 CARIBOO DISTRICT PLAN 1160 EXCEPT PLAN 20750

PLAN EPP58499

✓ CORRECTED THIS 30TH DAY OF SEPTEMBER, 2016 ✓
SEE CA5543516

PURSUANT TO SECTION 67 OF THE LAND TITLE ACT

BCGS 93G.097

INTEGRATED SURVEY AREA No. 39, PRINCE GEORGE, NAD83 (CSRS)

THE INTENDED PLOT SIZE OF THIS PLAN IS 560mm IN WIDTH BY 864mm IN HEIGHT (D SIZE) WHEN PLOTTED AT A SCALE OF 1:1000



ALL DISTANCES ARE SHOWN IN METRES AND DECIMALS THEREOF, UNLESS OTHERWISE INDICATED.

GRID BEARINGS ARE DERIVED FROM DIFFERENTIAL DUAL FREQUENCY GNSS OBSERVATIONS TO GEODETIC CONTROL MONUMENTS 86H1809 AND 86H1759 AND ARE REFERRED TO THE CENTRAL MERIDIAN OF UTM ZONE 10.

THIS PLAN SHOWS HORIZONTAL GROUND-LEVEL DISTANCES UNLESS OTHERWISE SPECIFIED. TO COMPUTE GRID DISTANCES, MULTIPLY GROUND-LEVEL DISTANCES BY THE COMBINED FACTOR OF 0.9992087. THE COMBINED FACTOR HAS BEEN DERIVED FROM GEODETIC CONTROL MONUMENTS 86H1809 AND 86H1759.

THE UTM COORDINATES AND ESTIMATED NETWORK HORIZONTAL POSITIONAL ACCURACY ACHIEVED ARE DERIVED FROM THE MASCOIT PUBLISHED COORDINATES AND STANDARD DEVIATIONS TO GEODETIC CONTROL MONUMENT 86H1759.

LEGEND

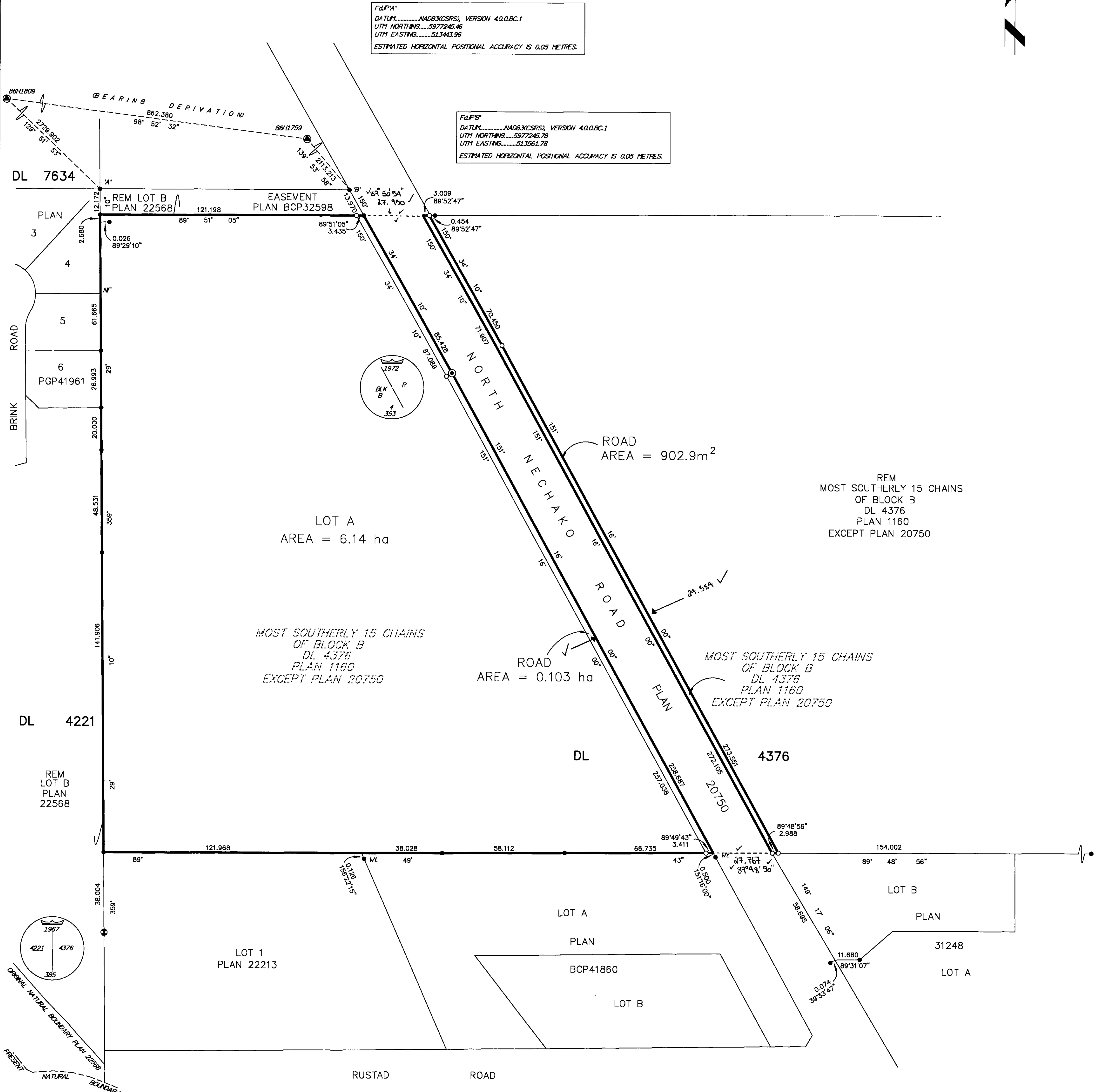
- CONTROL MONUMENT FOUND
- STANDARD CONCRETE POST FOUND
- STANDARD CAPPED POST FOUND
- STANDARD IRON POST FOUND
- STANDARD IRON POST PLACED

SOME LINES AND POSTS MAY BE SHOWN EXAGGERATED FOR CLARITY

NOTE: THIS PLAN SHOWS ONE OR MORE WITNESS POSTS WHICH ARE NOT SET ON THE TRUE CORNER(S).

FLIP#1
DATUM: NAD83(CSRS), VERSION 4.0.0.BC.1
UTM NORTHING: 5977245.46
UTM EASTING: 513443.96
ESTIMATED HORIZONTAL POSITIONAL ACCURACY IS 0.05 METRES.

FLIP#2
DATUM: NAD83(CSRS), VERSION 4.0.0.BC.1
UTM NORTHING: 5977245.78
UTM EASTING: 513561.78
ESTIMATED HORIZONTAL POSITIONAL ACCURACY IS 0.05 METRES.



REM MOST SOUTHERLY 15 CHAINS OF BLOCK B DL 4376 PLAN 1160 EXCEPT PLAN 20750

MOST SOUTHERLY 15 CHAINS OF BLOCK B DL 4376 PLAN 1160 EXCEPT PLAN 20750

MOST SOUTHERLY 15 CHAINS OF BLOCK B DL 4376 PLAN 1160 EXCEPT PLAN 20750

THIS PLAN LIES WITHIN THE JURISDICTION OF THE APPROVING OFFICER FOR THE CITY OF PRINCE GEORGE. CPG File: SD100498

THE FIELD SURVEY REPRESENTED BY THIS PLAN WAS COMPLETED ON THE 28th DAY OF FEBRUARY, 2016. SHAINA C. ODERTZEN, BCLS 798

THIS PLAN LIES WITHIN THE REGIONAL DISTRICT OF FRASER - FORT GEORGE.

McElhanney
McElhanney Associates
Land Surveying Ltd.
Prince George, B.C.
E-mail: pgmals@mcclhanney.com
Ph: (250) 561-2229

DL - 4376	File No. 2341-6322SD-2
CPG File No. SD100498	