

**SUBDIVISION PLAN OF LOT 3, PLAN 31887  
EXCEPT PLAN BCP33260 AND LOT B, PLAN  
BCP33260, DISTRICT LOT 343, CARIBOO  
DISTRICT**

**PLAN EPP57712**

PURSUANT TO SECTION 67 OF THE LAND TITLE ACT.  
INTEGRATED SURVEY AREA No. 39 PRINCE GEORGE BC

BCGS 93G.097  
SCALE 1 : 1250



ALL DISTANCES ARE IN METRES AND DECIMALS THEREOF

THE INTENDED PLOT SIZE OF THIS PLAN IS 560 mm IN WIDTH BY  
432 mm IN HEIGHT (C-SIZE) WHEN PLOTTED AT A SCALE OF 1:1250

GRID BEARINGS ARE DERIVED FROM OBSERVATIONS BETWEEN GEODETIC  
CONTROL MONUMENTS 85H1043 AND 79H8445.

THIS PLAN SHOWS HORIZONTAL GROUND-LEVEL DISTANCES UNLESS  
OTHERWISE SPECIFIED. TO COMPUTE GRID DISTANCES, MULTIPLY  
GROUND-LEVEL DISTANCES BY THE AVERAGE COMBINED FACTOR OF  
0.9995146 WHICH HAS BEEN DERIVED FROM CONTROL MONUMENTS 85H1043  
AND 79H8445

THE UTM COORDINATES AND ESTIMATED HORIZONTAL POSITIONAL  
ACCURACY ACHIEVED HAVE BEEN DERIVED FROM MASCOT PUBLISHED  
COORDINATES AND STANDARD DEVIATIONS FOR GEODETIC CONTROL  
MONUMENT 85H1043.

**LEGEND:**

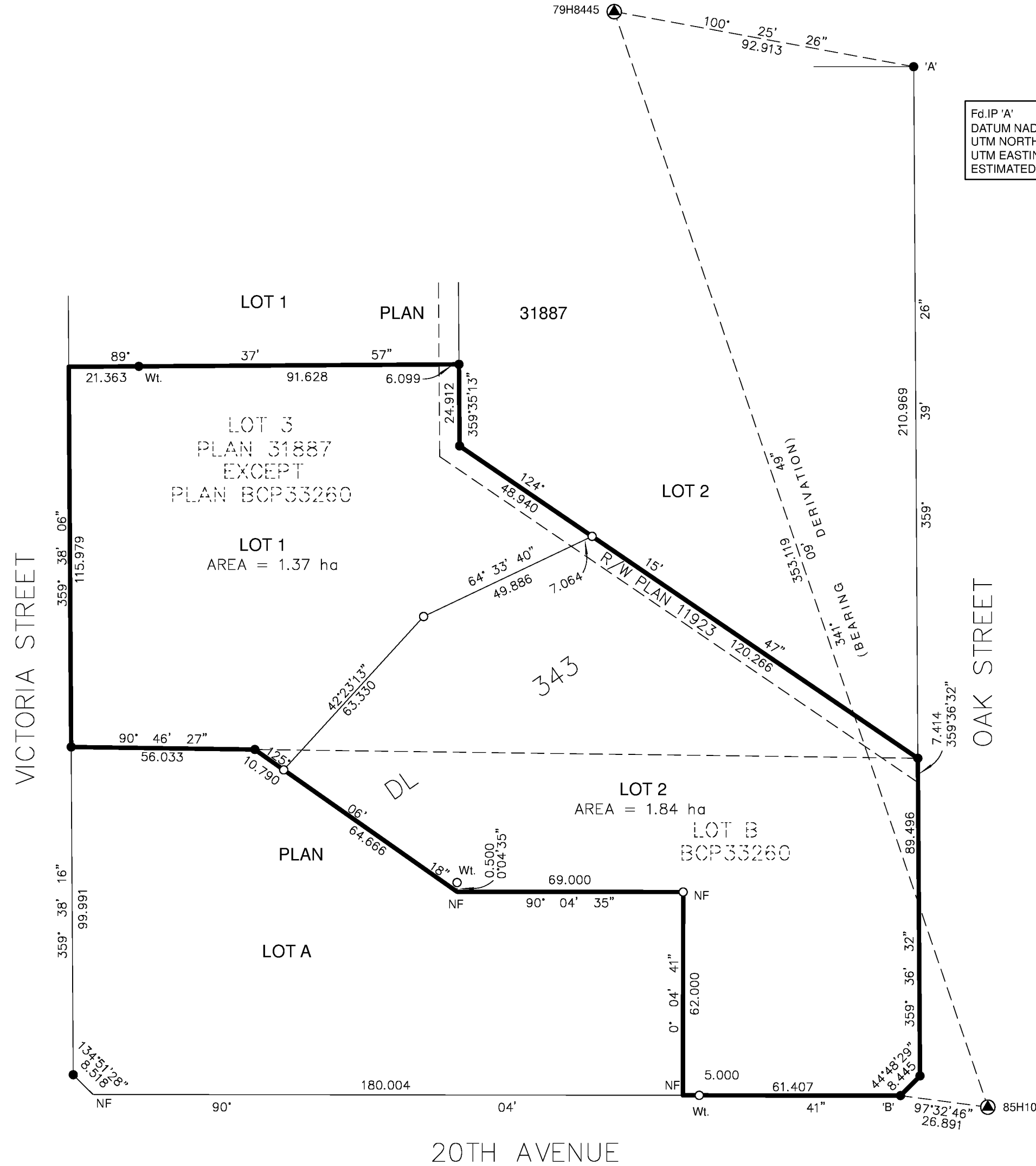
- ▲ CONTROL MONUMENT FOUND
- STANDARD IRON POST FOUND
- STANDARD IRON POST PLACED

SOME POSTS ARE EXAGGERATED FOR CLARITY.

NOTE: THIS PLAN SHOWS ONE OR MORE WITNESS POSTS WHICH  
ARE NOT SET ON THE TRUE CORNER(S).

Fd.IP 'A'  
DATUM NAD83(CSRS) V 4.0.0.BC.1 UTM ZONE 10  
UTM NORTHING.....5973354.22  
UTM EASTING.....516358.42  
ESTIMATED HORIZONTAL POSITIONAL ACCURACY 0.05m

Fd.IP 'B'  
DATUM NAD83(CSRS) V 4.0.0.BC.1 UTM ZONE 10  
UTM NORTHING.....5973040.50  
UTM EASTING.....516354.38  
ESTIMATED HORIZONTAL POSITIONAL ACCURACY 0.05m



THIS PLAN LIES WITHIN THE JURISDICTION OF THE  
APPROVING OFFICER FOR THE CITY OF PRINCE GEORGE

THE FIELD SURVEY REPRESENTED BY THIS PLAN WAS COMPLETED  
ON THE 20TH DAY OF NOVEMBER, 2015  
SHAUNA GOERTZEN, BCLS 798

THIS PLAN LIES WITHIN THE REGIONAL DISTRICT OF FRASER-FORT GEORGE



McELHANNEY ASSOCIATES  
LAND SURVEYING LTD.  
Suite 12  
556 North Nechako Road  
Prince George BC  
Canada V2K 1A1  
Tel 250 561 2229

Dwg No. 2341-6384-S  
ECR No. 181790