

# REFERENCE PLAN OF PATHWAY DEDICATION OVER PART OF LOT 1, DISTRICT LOT 3050, CARIBOO DISTRICT, PLAN 18026

PLAN EPP57709

PURSUANT TO SECTION 107 OF THE LAND TITLE ACT.

BCGS 93G.097

INTEGRATED SURVEY AREA No. 39, PRINCE GEORGE, NAD83 (CSRS)

THE INTENDED PLOT SIZE OF THIS PLAN IS 560mm IN WIDTH BY 432mm IN HEIGHT (C SIZE) WHEN PLOTTED AT A SCALE OF 1:750



ALL DISTANCES ARE HORIZONTAL GROUND-LEVEL AND ARE SHOWN IN METRES AND DECIMALS THEREOF, UNLESS OTHERWISE INDICATED.

GRID BEARINGS ARE DERIVED FROM GNSS OBSERVATIONS BETWEEN GEODETIC CONTROL MONUMENTS 86H1809 AND 86H1759.

THIS PLAN SHOWS HORIZONTAL GROUND-LEVEL DISTANCES, UNLESS OTHERWISE SPECIFIED, TO COMPUTE GRID DISTANCES, MULTIPLY GROUND-LEVEL DISTANCES BY THE AVERAGE COMBINED FACTOR OF 0.9995087 WHICH HAS BEEN DERIVED FROM 86H1809 AND 86H1759.

THE UTM COORDINATES AND ESTIMATED NETWORK HORIZONTAL POSITIONAL ACCURACY ACHIEVED ARE DERIVED FROM CONTROL MONUMENT 86H1759.

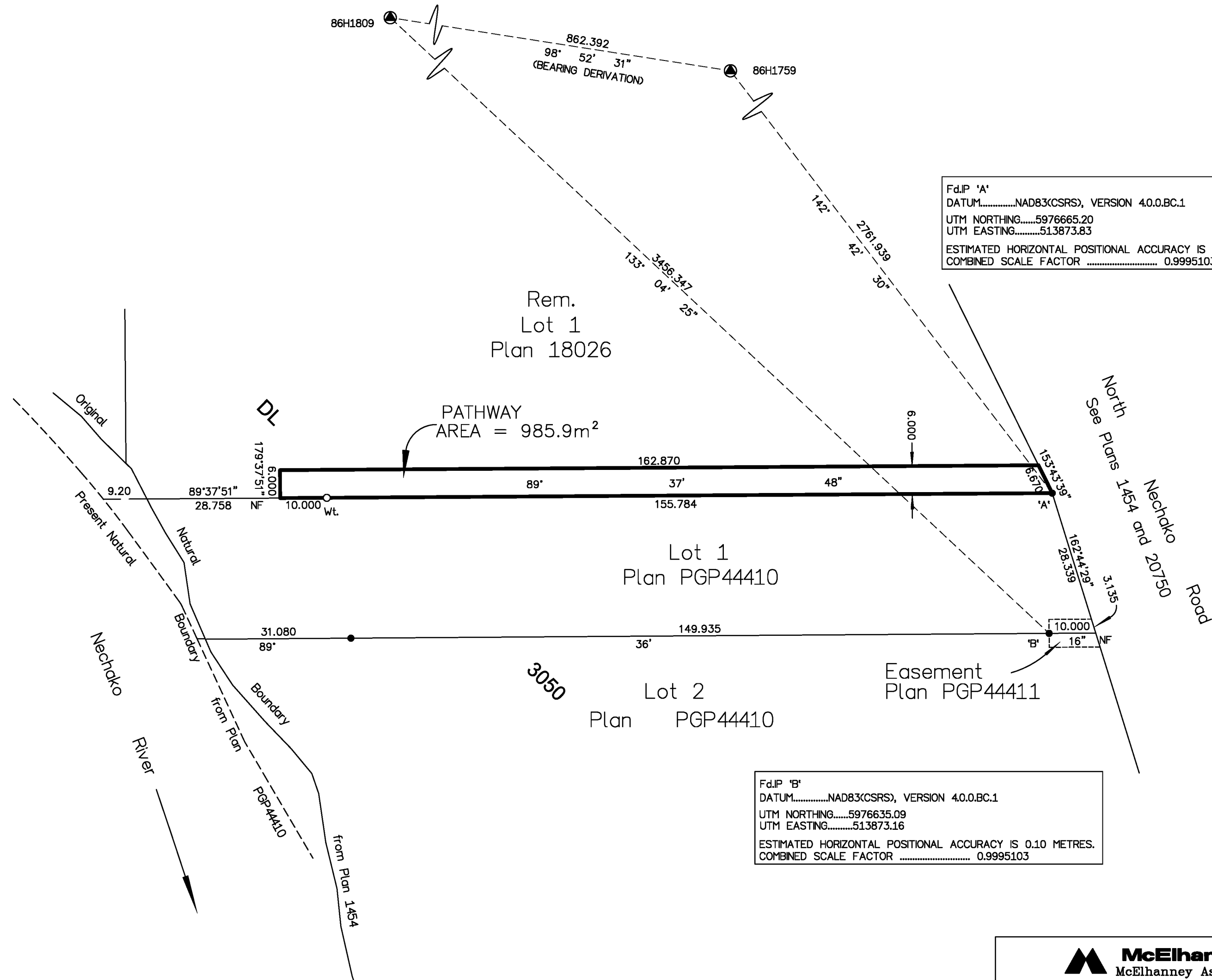
NOTE:  
THIS PLAN SHOWS ONE OR MORE WITNESS POSTS WHICH ARE NOT SET ON THE TRUE CORNERS.

**LEGEND**

- STANDARD IRON POST FOUND
- STANDARD IRON POST PLACED
- ⊙ CONTROL MONUMENT FOUND

Fd.P 'A'  
 DATUM.....NAD83(CSRS), VERSION 4.0.0.BC.1  
 UTM NORTHING.....5976665.20  
 UTM EASTING.....513873.83  
 ESTIMATED HORIZONTAL POSITIONAL ACCURACY IS 0.10 METRES.  
 COMBINED SCALE FACTOR ..... 0.9995103

Fd.P 'B'  
 DATUM.....NAD83(CSRS), VERSION 4.0.0.BC.1  
 UTM NORTHING.....5976635.09  
 UTM EASTING.....513873.16  
 ESTIMATED HORIZONTAL POSITIONAL ACCURACY IS 0.10 METRES.  
 COMBINED SCALE FACTOR ..... 0.9995103



North  
See Plans 1454 and 20750  
Nechako Road

THE ASSOCIATION OF BC LAND SURVEYORS HAS GRANTED RELIEF FROM COMPLIANCE WITH GSI RULE 5-4(2) FOR THIS SURVEY SINCE THE STANDARD DEVIATIONS OF THE ISA MONUMENTS DO NOT MEET THE REQUIREMENTS OF SAID RULE.

THE FIELD SURVEY REPRESENTED BY THIS PLAN WAS COMPLETED ON THE 20th DAY OF OCTOBER, 2016. SHAUNA GOERTZEN, BCLS 798

THIS PLAN LIES WITHIN THE REGIONAL DISTRICT OF FRASER - FORT GEORGE.

**McElhanney**  
 McElhanney Associates  
 Land Surveying Ltd.  
 Prince George, B.C.  
 E-mail: pgmals@mcelhanney.com  
 Ph: (250) 561-2229

File No. 2341-6504-RD