

STATUTORY RIGHT OF WAY PLAN OVER PART OF LOT A, PLAN 28628, EXCEPT PLANS 34009, PGP40584, PGP40845, PGP41652 AND EPP56988; AND PART OF LOT 7, PLAN EPP56988, BOTH WITHIN DISTRICT LOT 4039, CARIBOO DISTRICT

PLAN EPP57612

Pursuant to Section 113 of the Land Title Act
BCGS 93G.097



The intended plot size of this plan is 560mm in width by 432mm in height (C size) when plotted at a scale of 1:1000.

All distances are in metres and decimals thereof.

Integrated Survey Area No. 39, Prince George, NAD83 (CSRS) 4.0.0.BC.1.

Grid bearings are derived from observations between geodetic control monuments 86H1592 and 86H1605

The UTM coordinates and estimated horizontal positional accuracy achieved are derived from MASCOT published coordinates and standard deviations for geodetic control monuments 86H1592 and 86H1605.

This plan shows horizontal ground-level distances unless otherwise specified. To compute grid distances, multiply ground-level distances by the average combined factor of 0.9994949 which has been derived from geodetic control monuments 86H1592 and 86H1605.

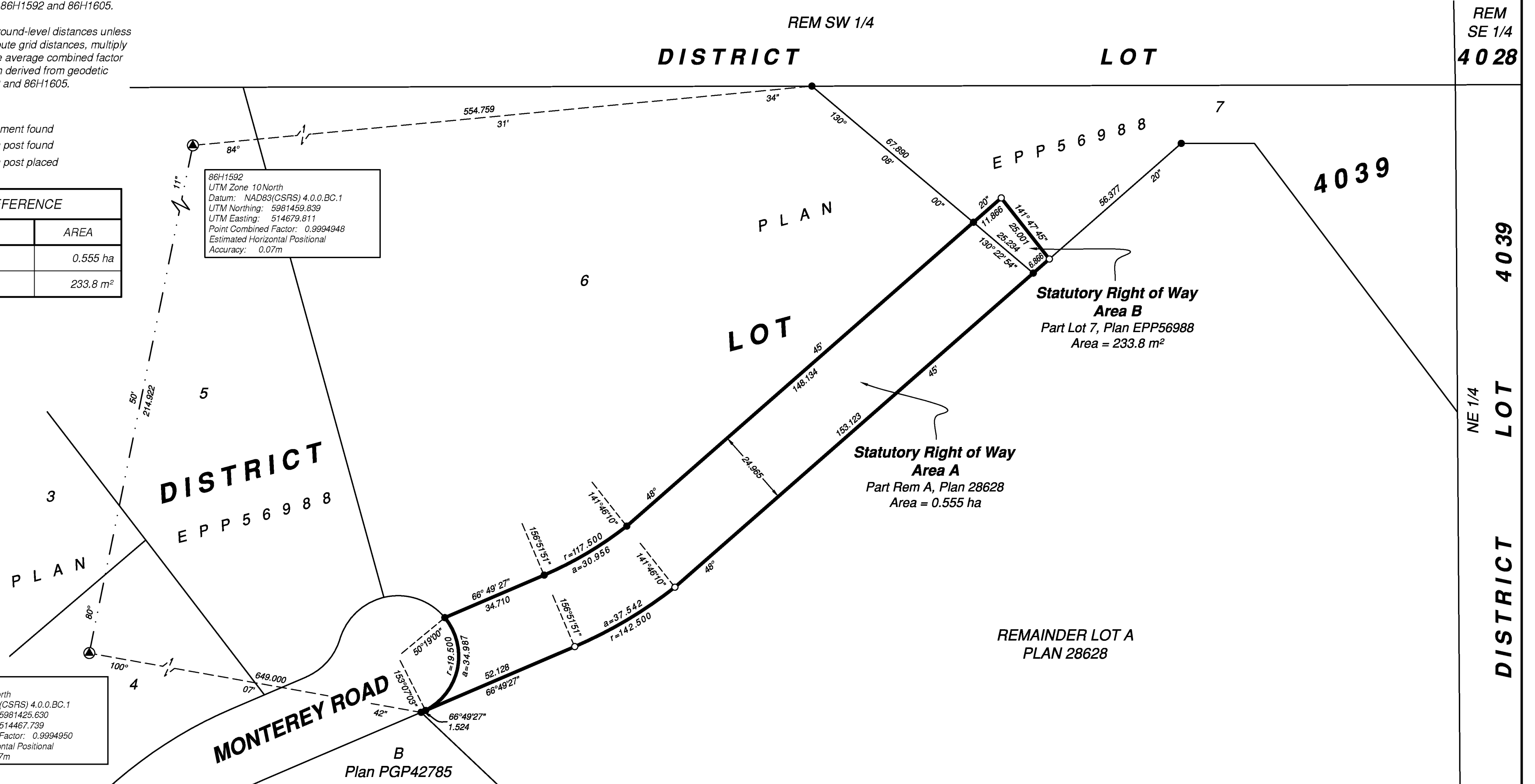
LEGEND

- denotes control monument found
- denotes standard iron post found
- denotes standard iron post placed

BOOK OF REFERENCE	
PART OF	AREA
REM LOT A, PLAN 28628	0.555 ha
LOT 7, PLAN EPP56988	233.8 m ²

86H1592
UTM Zone 10North
Datum: NAD83(CSRS) 4.0.0.BC.1
UTM Northing: 5981459.839
UTM Easting: 514679.811
Point Combined Factor: 0.9994948
Estimated Horizontal Positional Accuracy: 0.07m

86H1605
UTM Zone 10North
Datum: NAD83(CSRS) 4.0.0.BC.1
UTM Northing: 5981425.630
UTM Easting: 514467.739
Point Combined Factor: 0.9994950
Estimated Horizontal Positional Accuracy: 0.07m



This plan lies within the Regional District of Fraser-Fort George

The field survey represented by this plan was completed on the 14th day of October, 2015.

Tracey Peet, BCLS 936

ECR# 181209



WSP Surveys (BC) Limited Partnership
780-3rd Avenue, Prince George, BC

PROJECT REF./DRAWING No.
010053912-SDRW02-R00