

STATUTORY RIGHT OF WAY PLAN OVER PART OF LOT 6, DISTRICT LOT 4377, CARIBOO DISTRICT, PLAN EPP56990

PLAN EPP56991

Pursuant to Section 113 of the Land Title Act
BCGS 93J.007



The intended plot size of this plan is 280mm in width by 432mm in height (B size) when plotted at a scale of 1:1000.

All distances are in metres and decimals thereof.

Integrated Survey Area No. 39, Prince George, NAD83 (CSRS) 4.0.0.BC.1.

Grid bearings are derived from observations between geodetic control monuments 86H1550 and 86H1594.

The UTM coordinates and estimated horizontal positional accuracy achieved are derived from MASCOT published coordinates and standard deviations for geodetic control monuments 86H1550 and 86H1594.

This plan shows horizontal ground-level distances unless otherwise specified. To compute grid distances, multiply ground-level distances by the average combined factor of 0.9994973 which has been derived from geodetic control monuments 86H1550 and 86H1594.

This plan shows one or more witness posts which are not set on the true corner(s).

LEGEND

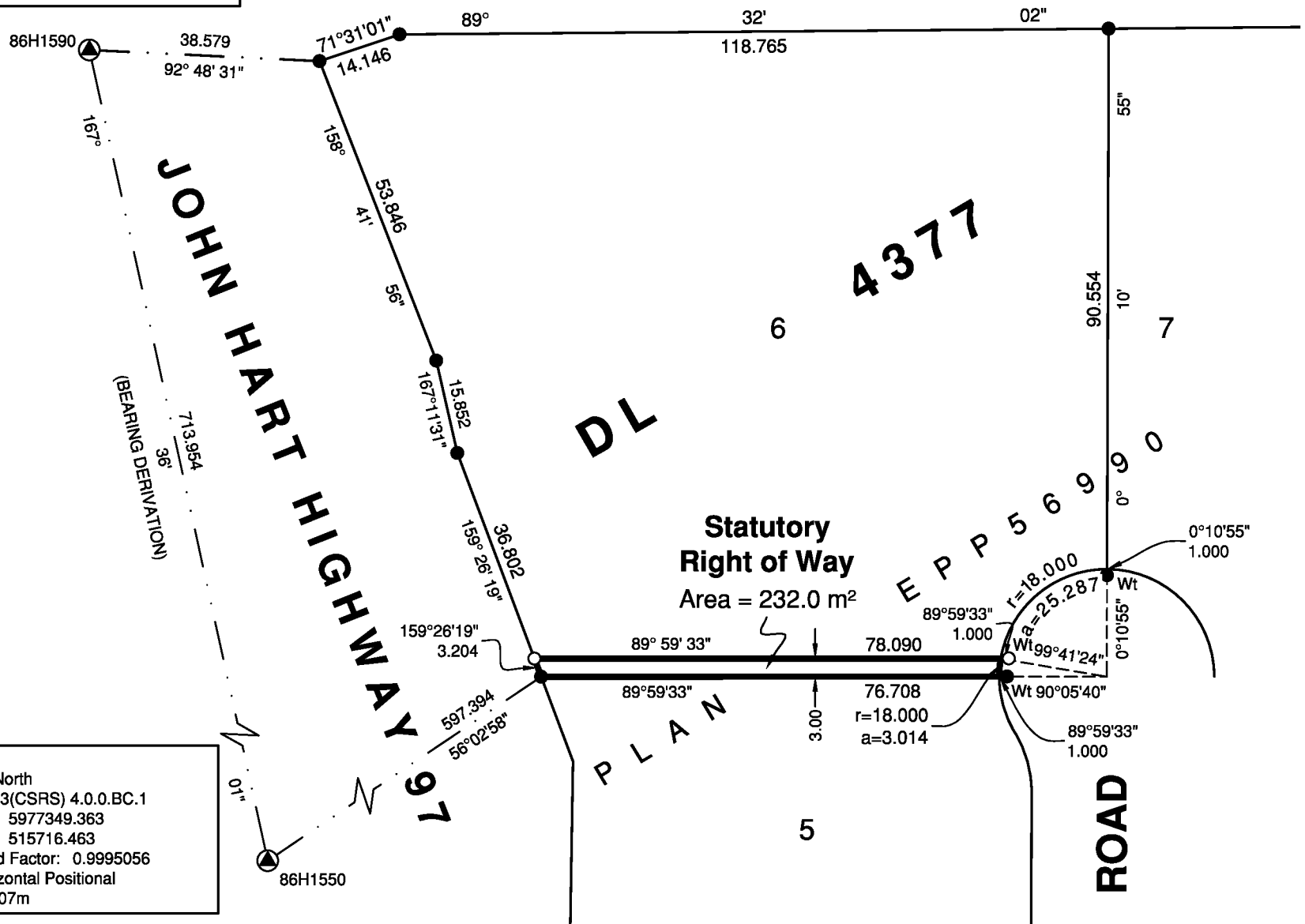
- ⊙ denotes control monument found
- denotes standard iron post found
- denotes standard iron post placed



86H1594
UTM Zone 10 North
Datum: NAD83(CSRS) 4.0.0.BC.1
UTM Northing: 5978046.33
UTM Easting: 515563.23
Point Combined Factor: 0.9995048
Estimated Horizontal Positional Accuracy: 0.07m

HOUGHTALING ROAD

86H1550
UTM Zone 10 North
Datum: NAD83(CSRS) 4.0.0.BC.1
UTM Northing: 5977349.363
UTM Easting: 515716.463
Point Combined Factor: 0.9995056
Estimated Horizontal Positional Accuracy: 0.07m



Plotted: 12/15/2017 11:47 AM User: Wbabiniski



WSP Surveys (BC) Limited Partnership
780-3rd Avenue, Prince George, BC

PROJECT REF./DRAWING No.
171-16858-00-000-00-SUBRW001-R0

This plan lies within the Regional District of Fraser-Fort George

The field survey represented by this plan was completed on the 6th day of December, 2017.

Tracey Peet, BCLS 936