

**STATUTORY RIGHT OF WAY PLAN OVER PART OF LOT 1,
DISTRICT LOT 4039, CARIBOO DISTRICT, PLAN EPP56988**

PLAN EPP56989

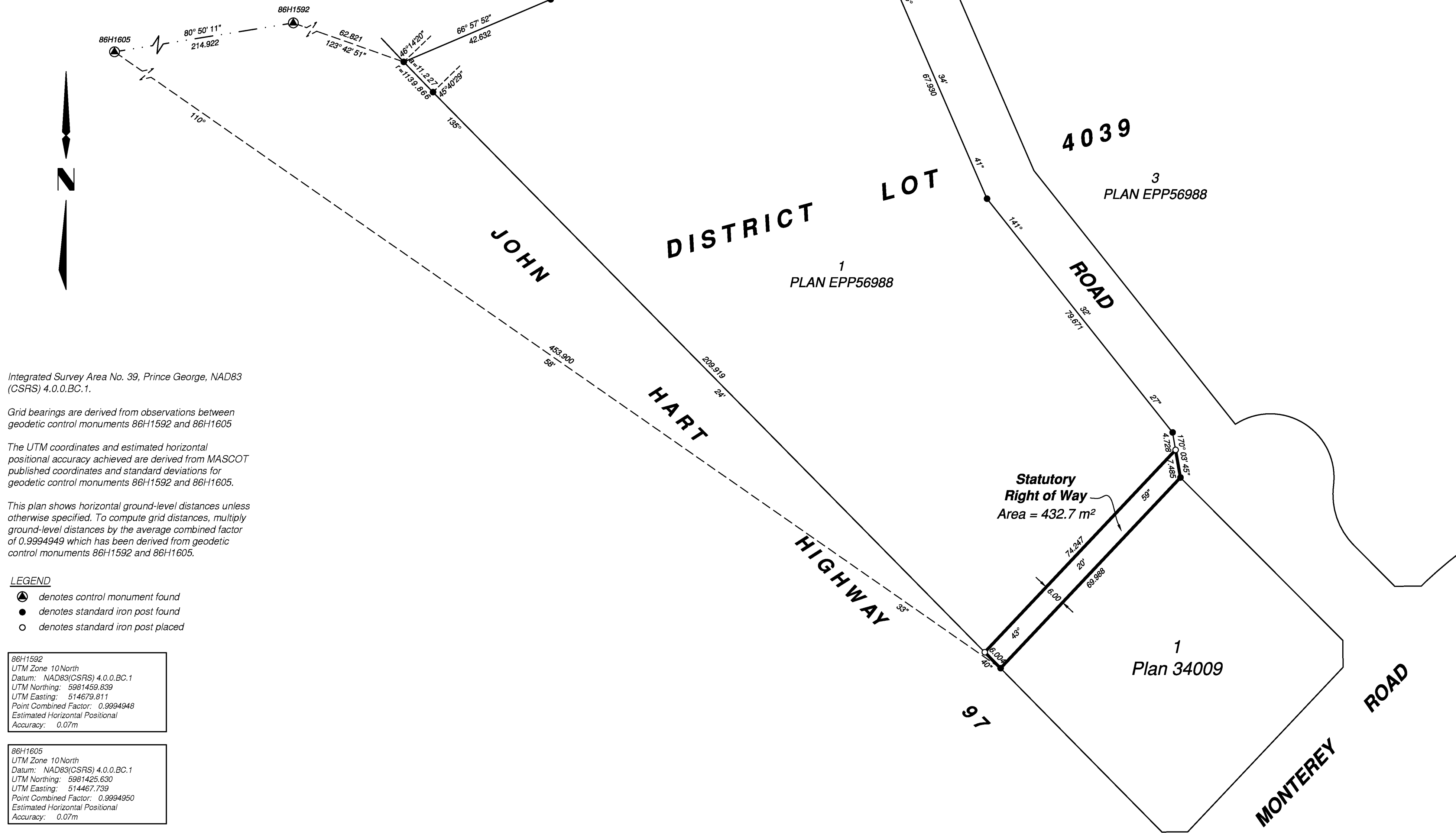
Pursuant to Section 113 of the Land Title Act

BCGS 93G.097



The intended plot size of this plan is 560mm in width by 432mm in height (C size) when plotted at a scale of 1:750.

All distances are in metres and decimals thereof.



Integrated Survey Area No. 39, Prince George, NAD83 (CSRS) 4.0.0.BC.1.

Grid bearings are derived from observations between geodetic control monuments 86H1592 and 86H1605

The UTM coordinates and estimated horizontal positional accuracy achieved are derived from MASCOT published coordinates and standard deviations for geodetic control monuments 86H1592 and 86H1605.

This plan shows horizontal ground-level distances unless otherwise specified. To compute grid distances, multiply ground-level distances by the average combined factor of 0.9994949 which has been derived from geodetic control monuments 86H1592 and 86H1605.

LEGEND

- ⊙ denotes control monument found
- denotes standard iron post found
- denotes standard iron post placed

86H1592
 UTM Zone 10 North
 Datum: NAD83(CSRS) 4.0.0.BC.1
 UTM Northing: 5981459.839
 UTM Easting: 514679.811
 Point Combined Factor: 0.9994948
 Estimated Horizontal Positional Accuracy: 0.07m

86H1605
 UTM Zone 10 North
 Datum: NAD83(CSRS) 4.0.0.BC.1
 UTM Northing: 5981425.630
 UTM Easting: 514467.739
 Point Combined Factor: 0.9994950
 Estimated Horizontal Positional Accuracy: 0.07m

WSP
 WSP Surveys (BC) Limited Partnership
 780-3rd Avenue, Prince George, BC
 PROJECT REF./DRAWING No.
 010053912-SDRW01-R00

This plan lies within the Regional District of Fraser-Fort George
 The field survey represented by this plan was completed on the 16th day of November, 2015.
 Tracey Peet, BCLS 936
 ECR# 181194