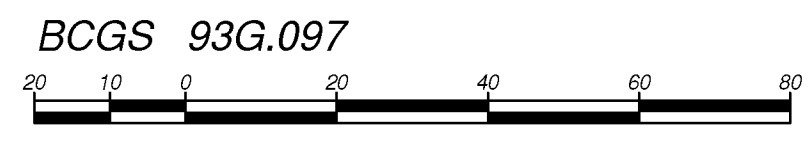


SUBDIVISION PLAN OF PART OF LOT A, PLAN 28628 EXCEPT PLANS 34009, PGP40584, PGP40845 AND PGP41652; AND LOT A, PLAN PGP42785, BOTH WITHIN DISTRICT LOT 4039, CARIBOO DISTRICT.

PLAN EPP56988



The intended plot size of this plan is 864mm in width by 560mm in height (D size) when plotted at a scale of 1:1000.

All distances are in metres and decimals thereof.

- LEGEND**
- denotes control monument found
 - denotes standard iron post found
 - denotes standard iron post placed

Integrated Survey Area No. 39, Prince George, NAD83 (CSRS) 4.0.0.BC.1

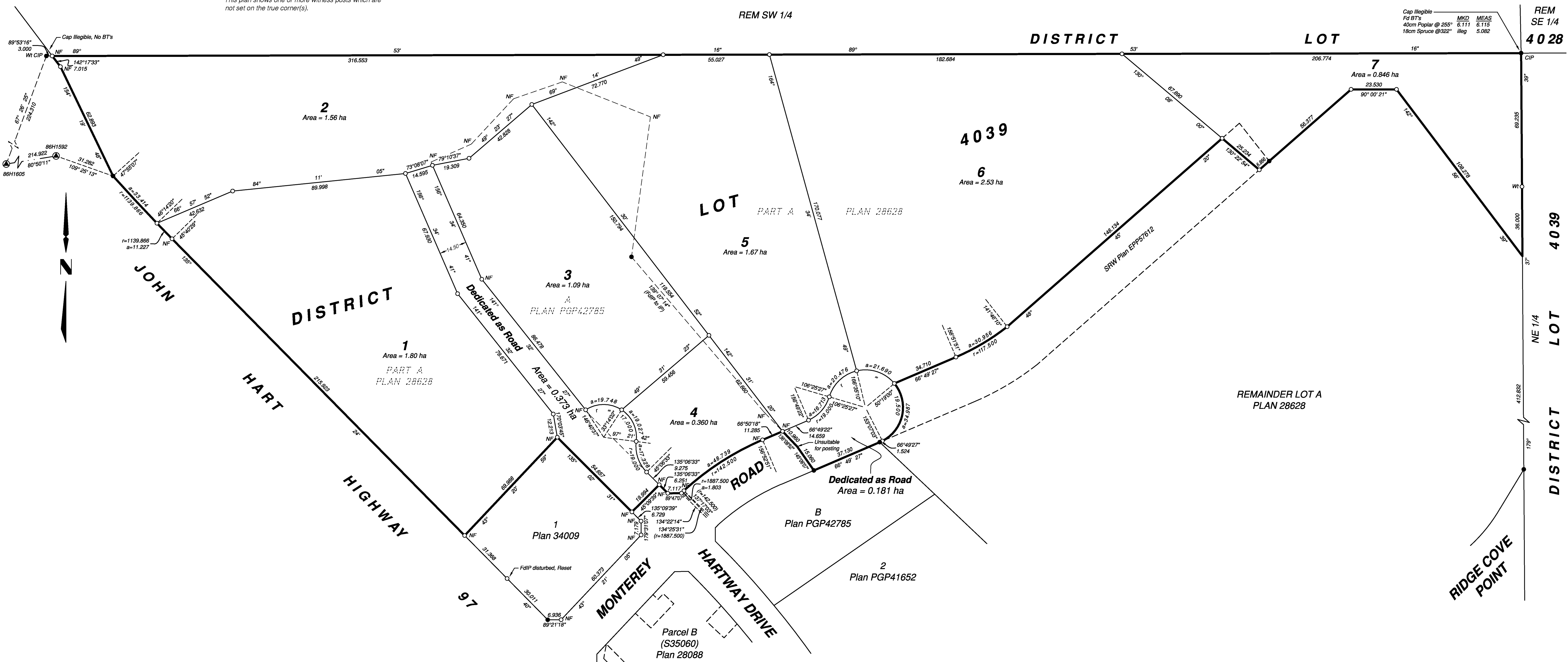
Grid bearings are derived from observations between geodetic control monuments 86H1592 and 86H1605

The UTM coordinates and estimated horizontal positional accuracy achieved are derived from MASCOT published coordinates and standard deviations for geodetic control monuments 86H1592 and 86H1605.

This plan shows horizontal ground-level distances unless otherwise specified. To compute grid distances, multiply ground-level distances by the average combined factor of 0.9994949 which has been derived from geodetic control monuments 86H1592 and 86H1605.

This plan shows one or more witness posts which are not set on the true corner(s).

86H1592 UTM Zone 10 North Datum: NAD83(CSRS) 4.0.0.BC.1 UTM Northing: 5981459.839 UTM Easting: 514679.811 Point Combined Factor: 0.9994949 Estimated Horizontal Positional Accuracy: 0.07m
86H1605 UTM Zone 10 North Datum: NAD83(CSRS) 4.0.0.BC.1 UTM Northing: 5981425.630 UTM Easting: 514467.739 Point Combined Factor: 0.9994949 Estimated Horizontal Positional Accuracy: 0.07m



Cap illegible	MKD	MEAS
Fd BT's	255°	6.111 6.115
40cm Poplar @ 255°	illeg	5.082
18cm Spruce @ 322°		

Access to Lot 7 by easement only.

This plan lies within the jurisdiction of the Approving Officer for the Ministry of Transportation and Infrastructure.

This plan lies within the jurisdiction of the Approving Officer for the City of Prince George.

This plan lies within the Regional District of Fraser-Fort George

The field survey represented by this plan was completed on the 14th day of October, 2015.

Tracey Peet, BCL S 936
ECR# 181204

WSP
WSP Surveys (BC) Limited Partnership
780-3rd Avenue, Prince George, BC
PROJECT REF. DRAWING No.
010053912-SDSU01-R00