

REFERENCE PLAN OF EASEMENT OVER PART OF STRATA LOTS 5 TO 7, INCLUSIVE, DISTRICT LOT 1433, CARIBOO DISTRICT, PLAN EPS3078

PLAN EPP56940

PURSUANT TO SECTION 99(1)(e) OF THE LAND TITLE ACT

BCGS 93G.087

INTEGRATED SURVEY AREA No. 39, PRINCE GEORGE, NAD83 (CSRS) ZONE 10



THE INTENDED PLOT SIZE OF THIS PLAN IS 560mm IN WIDTH BY 432mm IN HEIGHT (C SIZE) WHEN PLOTTED AT A SCALE OF 1:500

GRID BEARINGS ARE DERIVED FROM PREVIOUSLY INTEGRATED PLAN EPS3078

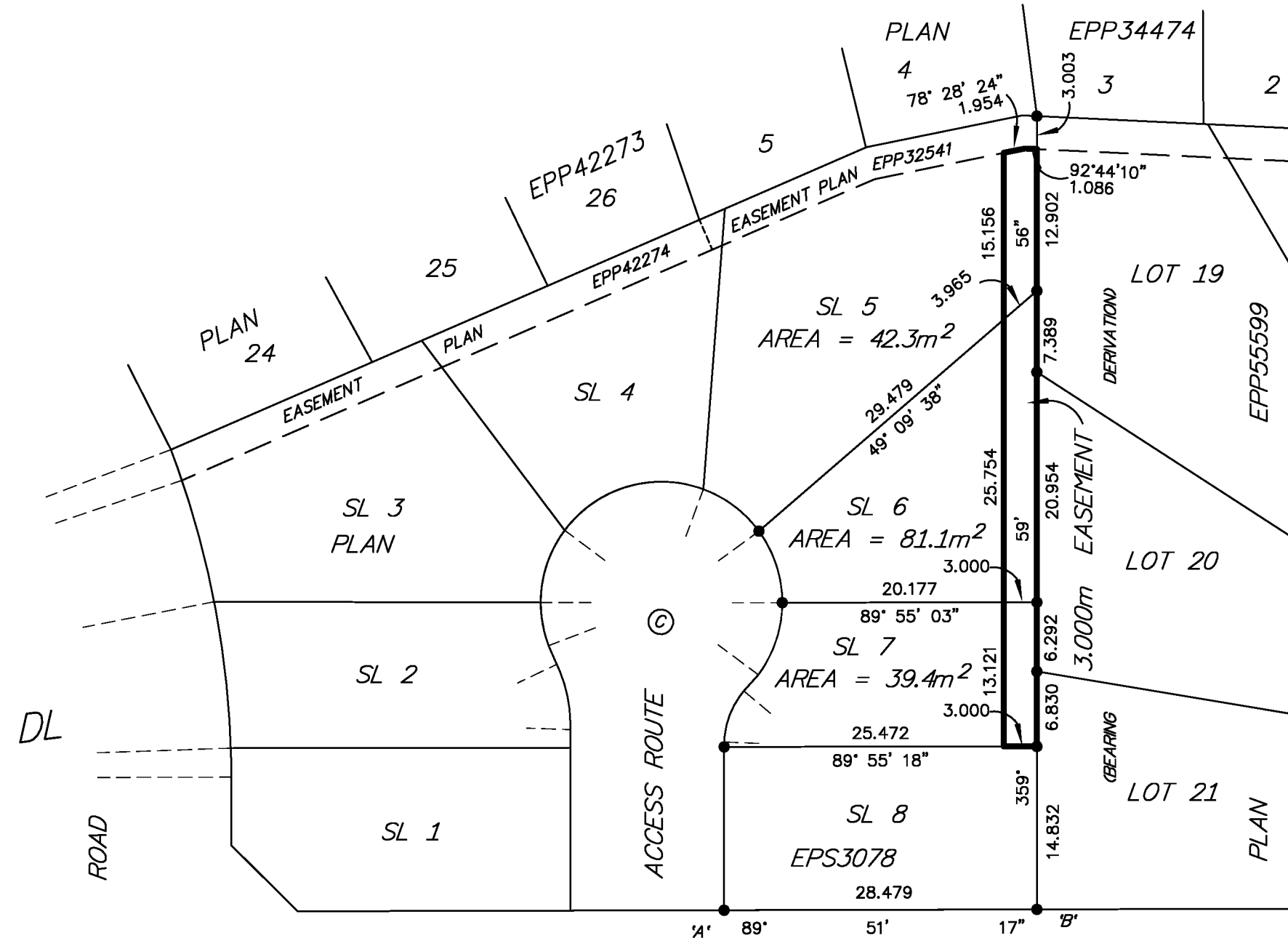
THIS PLAN SHOWS HORIZONTAL GROUND-LEVEL DISTANCES, UNLESS OTHERWISE SPECIFIED. TO COMPUTE GRID DISTANCES, MULTIPLY GROUND-LEVEL DISTANCES BY THE AVERAGE COMBINED FACTOR OF 0.9995032 WHICH HAS BEEN DERIVED FROM GEODETIC CONTROL MONUMENTS 86H1817 AND 86H1544.

THE UTM COORDINATES AND ESTIMATED NETWORK HORIZONTAL POSITIONAL ACCURACY ACHIEVED ARE DERIVED FROM CONTROL MONUMENT 86H1817.

LEGEND

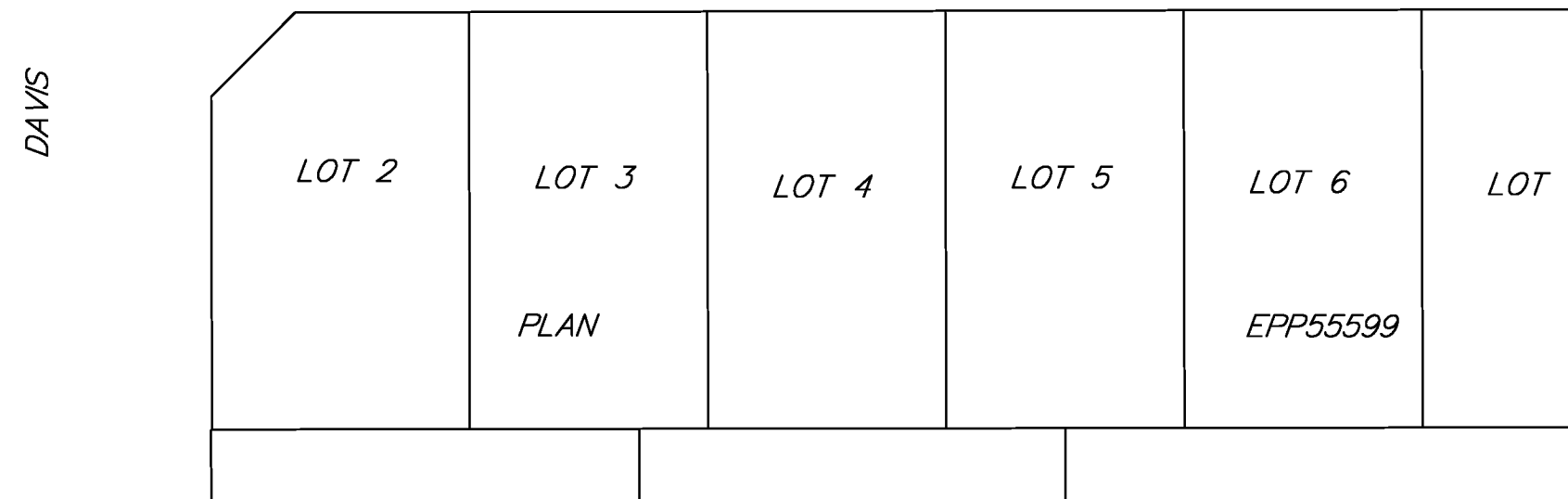
- STANDARD IRON POST FOUND
- SL DENOTES STRATA LOT
- © DENOTES COMMON PROPERTY

BOOK OF REFERENCE	
DESCRIPTION	AREA
SL 5, Plan EPS3078	42.3m ²
SL 6, Plan EPS3078	81.1m ²
SL 7, Plan EPS3078	39.4m ²



FdIP 'A'
 DATUM.....NAD83(CSRS), VERSION 4.0.0.BC.1
 UTM NORTHING.....5970347.46
 UTM EASTING.....513945.55
 ESTIMATED HORIZONTAL POSITIONAL ACCURACY IS 0.03 METRES.

FdIP 'B'
 DATUM.....NAD83(CSRS), VERSION 4.0.0.BC.1
 UTM NORTHING.....5970347.53
 UTM EASTING.....513974.02
 ESTIMATED HORIZONTAL POSITIONAL ACCURACY IS 0.03 METRES.



THIS PLAN LIES WITHIN THE JURISDICTION OF THE APPROVING OFFICER FOR THE CITY OF PRINCE GEORGE
 CPG File: SD100470

THE FIELD SURVEY REPRESENTED BY THIS PLAN WAS COMPLETED ON THE 22nd DAY OF OCTOBER, 2015.
 SHAUNA C. GOERTZEN, BCLS 798

THIS PLAN LIES WITHIN THE REGIONAL DISTRICT OF FRASER - FORT GEORGE.

McElhanney
 McElhanney Associates
 Land Surveying Ltd.
 Prince George, B.C.
 E-mail: pgmals@mcElhanney.com
 Ph: (250) 561-2229

DL - 1433 File No. 2341-6354-BS-E
 CPG File No. SD100470