

REFERENCE PLAN OF LOT 28, DISTRICT LOT 1433 CARIBOO DISTRICT, PLAN EPP42273, EXCEPT PLAN EPP55599

PLAN EPP56939

PURSUANT TO SECTION 100(1)(a) OF THE LAND TITLE ACT

BCGS 93G.087

INTEGRATED SURVEY AREA No. 39, PRINCE GEORGE, NAD83 (CSRS) ZONE 10



THE INTENDED PLOT SIZE OF THIS PLAN IS 560mm IN WIDTH BY 432mm IN HEIGHT (C SIZE) WHEN PLOTTED AT A SCALE OF 1:500

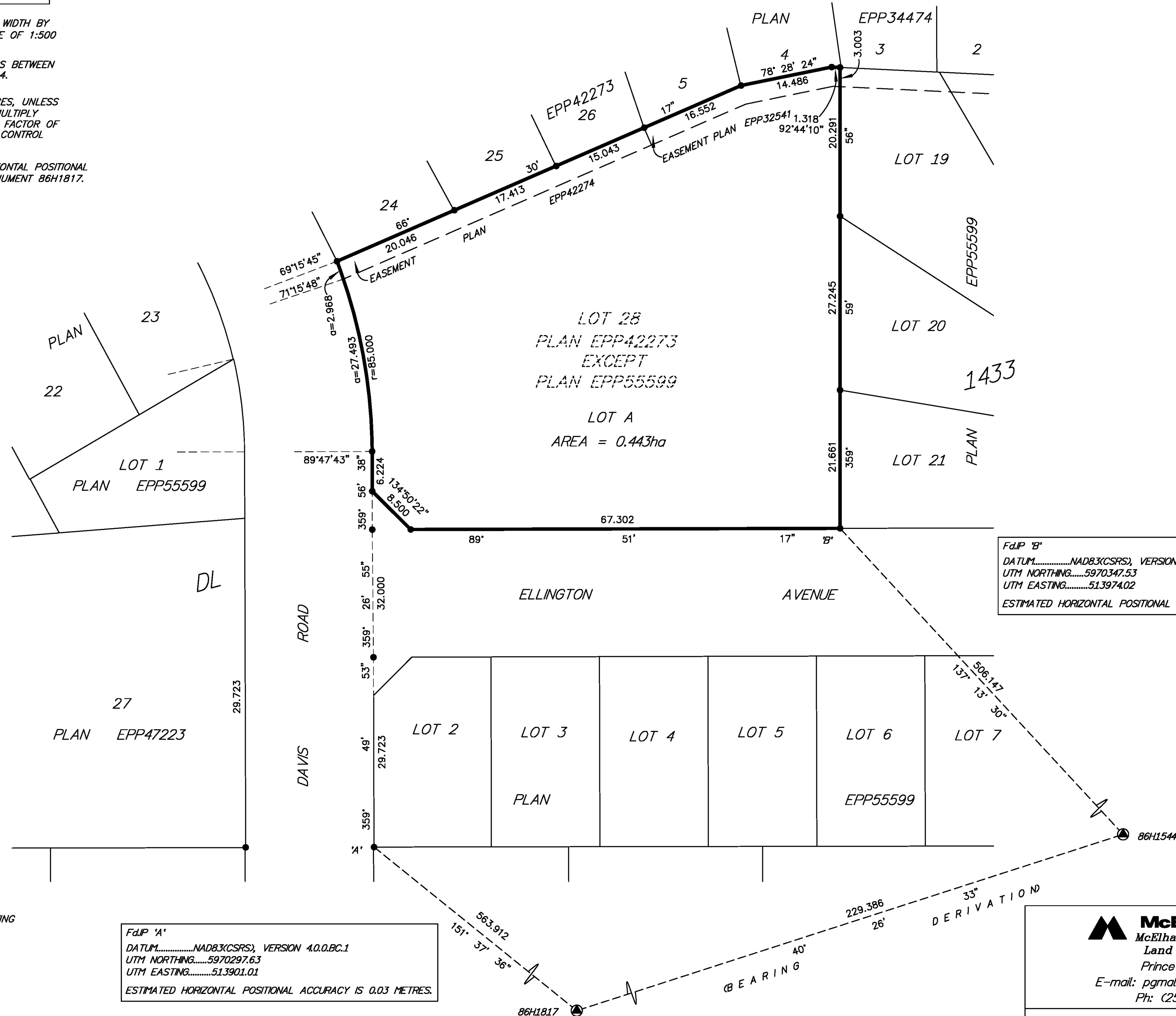
GRID BEARINGS ARE DERIVED FROM GNSS OBSERVATIONS BETWEEN GEODETIC CONTROL MONUMENTS 86H1817 AND 86H1544.

THIS PLAN SHOWS HORIZONTAL GROUND-LEVEL DISTANCES, UNLESS OTHERWISE SPECIFIED. TO COMPUTE GRID DISTANCES, MULTIPLY GROUND-LEVEL DISTANCES BY THE AVERAGE COMBINED FACTOR OF 0.9995032 WHICH HAS BEEN DERIVED FROM GEODETIC CONTROL MONUMENTS 86H1817 AND 86H1544.

THE UTM COORDINATES AND ESTIMATED NETWORK HORIZONTAL POSITIONAL ACCURACY ACHIEVED ARE DERIVED FROM CONTROL MONUMENT 86H1817.

LEGEND

- STANDARD IRON POST FOUND
- ⊙ CONTROL MONUMENT FOUND



FdIP 'B'
 DATUM.....NAD83(CSRS), VERSION 4.0.0.BC.1
 UTM NORTHING.....5970347.53
 UTM EASTING.....513974.02
 ESTIMATED HORIZONTAL POSITIONAL ACCURACY IS 0.03 METRES.

FdIP 'A'
 DATUM.....NAD83(CSRS), VERSION 4.0.0.BC.1
 UTM NORTHING.....5970297.63
 UTM EASTING.....513901.01
 ESTIMATED HORIZONTAL POSITIONAL ACCURACY IS 0.03 METRES.

THIS PLAN LIES WITHIN THE JURISDICTION OF THE APPROVING OFFICER FOR THE CITY OF PRINCE GEORGE
 CPG File: SD100470

THE FIELD SURVEY REPRESENTED BY THIS PLAN WAS COMPLETED ON THE 22nd DAY OF OCTOBER, 2015.
 SHAUNA C. GOERTZEN, BCLS 798

THIS PLAN LIES WITHIN THE REGIONAL DISTRICT OF FRASER - FORT GEORGE.

McElhanney
 McElhanney Associates
 Land Surveying Ltd.
 Prince George, B.C.
 E-mail: pgmals@mcelhanney.com
 Ph: (250) 561-2229

DL - 1433	File No. 2341-6354-R
CPG File No. SD100470	