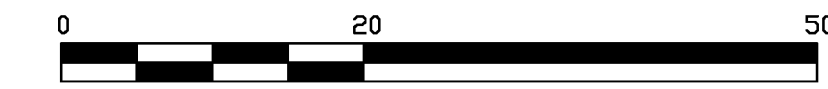


**REFERENCE PLAN OF EASEMENT OVER PARTS OF
LOTS 2 TO 13, INCLUSIVE, DISTRICT LOT 1433,
CARIBOO DISTRICT, PLAN EPP55599**

PLAN EPP56938

PURSUANT TO SECTION 99(1)(e) OF THE LAND TITLE ACT
BCGS 93G.087

INTEGRATED SURVEY AREA No. 39, PRINCE GEORGE, NAD83 (CSRS) ZONE 10



THE INTENDED PLOT SIZE OF THIS PLAN IS 864mm IN WIDTH BY
560mm IN HEIGHT (D SIZE) WHEN PLOTTED AT A SCALE OF 1:500

GRID BEARINGS ARE DERIVED FROM PREVIOUSLY INTEGRATED PLAN
EPP55599

THIS PLAN SHOWS HORIZONTAL GROUND-LEVEL DISTANCES, UNLESS
OTHERWISE SPECIFIED. TO COMPUTE GRID DISTANCES, MULTIPLY
GROUND-LEVEL DISTANCES BY THE AVERAGE COMBINED FACTOR OF
0.9995032 WHICH HAS BEEN DERIVED FROM 86H1817 AND 86H1544.

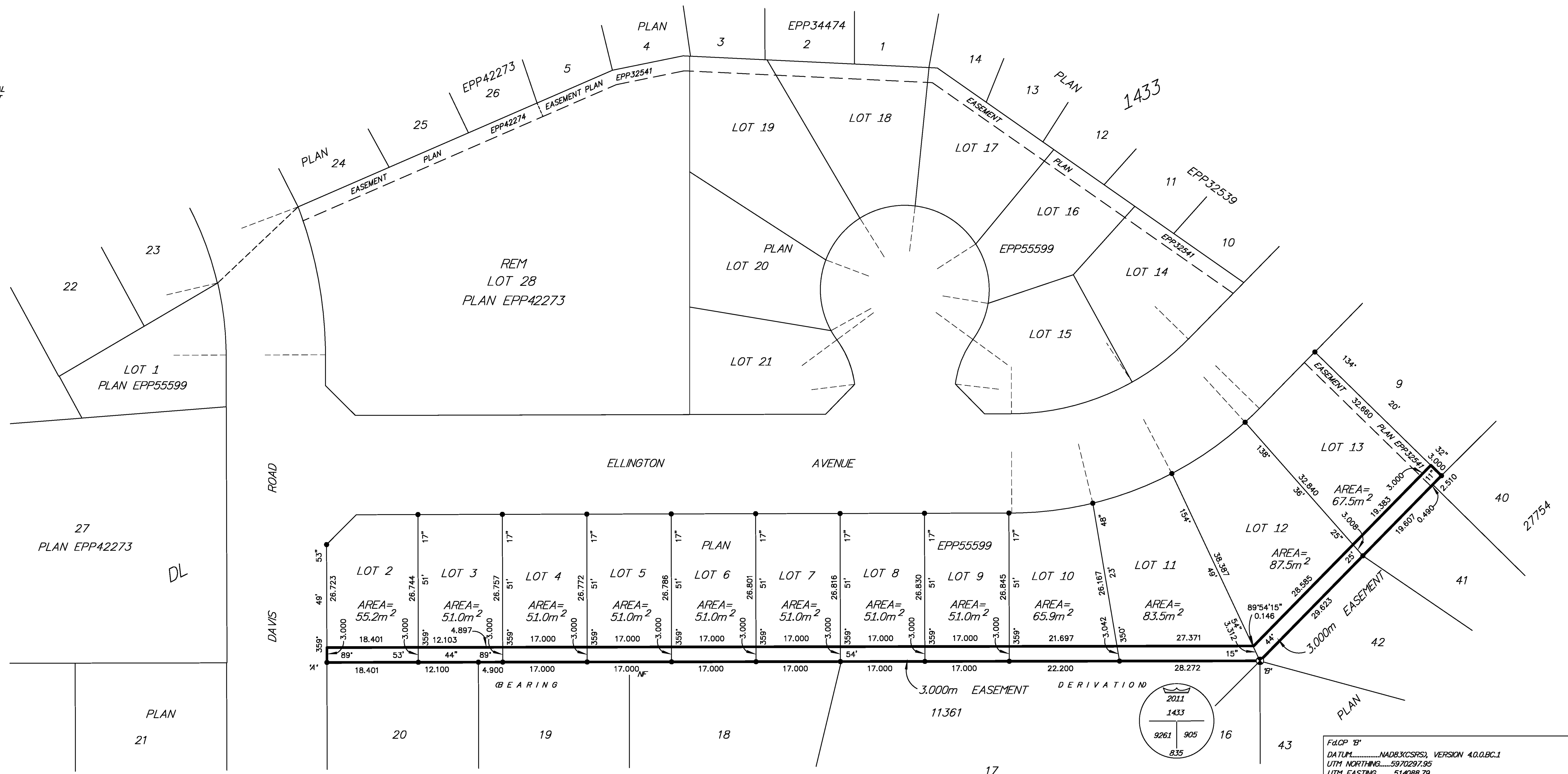
THE UTM COORDINATES AND ESTIMATED NETWORK HORIZONTAL POSITIONAL
ACCURACY ACHIEVED ARE DERIVED FROM GEODETIC CONTROL MONUMENT
86H1817.

LEGEND

- STANDARD CAPPED POST FOUND
- STANDARD IRON POST FOUND



BOOK OF REFERENCE	
DESCRIPTION	AREA
Lot 2, Plan EPP55599	55.2m ²
Lot 3, Plan EPP55599	51.0m ²
Lot 4, Plan EPP55599	51.0m ²
Lot 5, Plan EPP55599	51.0m ²
Lot 6, Plan EPP55599	51.0m ²
Lot 7, Plan EPP55599	51.0m ²
Lot 8, Plan EPP55599	51.0m ²
Lot 9, Plan EPP55599	51.0m ²
Lot 10, Plan EPP55599	65.9m ²
Lot 11, Plan EPP55599	83.5m ²
Lot 12, Plan EPP55599	87.5m ²
Lot 13, Plan EPP55599	67.5m ²



File P 'A'
DATUM.....NAD83(CSRS), VERSION 4.0.0.BC.1
UTM NORTHING.....5970297.63
UTM EASTING.....513901.01
ESTIMATED HORIZONTAL POSITIONAL ACCURACY IS 0.03 METRES.

File P 'B'
DATUM.....NAD83(CSRS), VERSION 4.0.0.BC.1
UTM NORTHING.....5970297.95
UTM EASTING.....514088.79
ESTIMATED HORIZONTAL POSITIONAL ACCURACY IS 0.03 METRES.

THIS PLAN LIES WITHIN THE JURISDICTION OF THE APPROVING
OFFICER FOR THE CITY OF PRINCE GEORGE
CPG File: SD100470

THE FIELD SURVEY REPRESENTED BY THIS PLAN
WAS COMPLETED ON THE 22nd DAY OF OCTOBER, 2015.
SHAUNA C. GOERTZEN, BCLS 798

THIS PLAN LIES WITHIN THE REGIONAL DISTRICT OF FRASER - FORT GEORGE.

McElhanney
McElhanney Associates
Land Surveying Ltd.
Prince George, B.C.
E-mail: pgmats@mcElhanney.com
Ph: (250) 561-2229

DL - 1433 File No. 2341-6354-E
CPG File No. SD100470