

EXPLANATORY PLAN OF PART OF LOT 1, DISTRICT LOT 4377, CARIBOO DISTRICT, PLAN EPP53964.

For Easement Purposes.

Pursuant to Section 99(1)(e) of the Land Title Act.

BCGS 93G.087



All distances are in metres and decimals thereof.

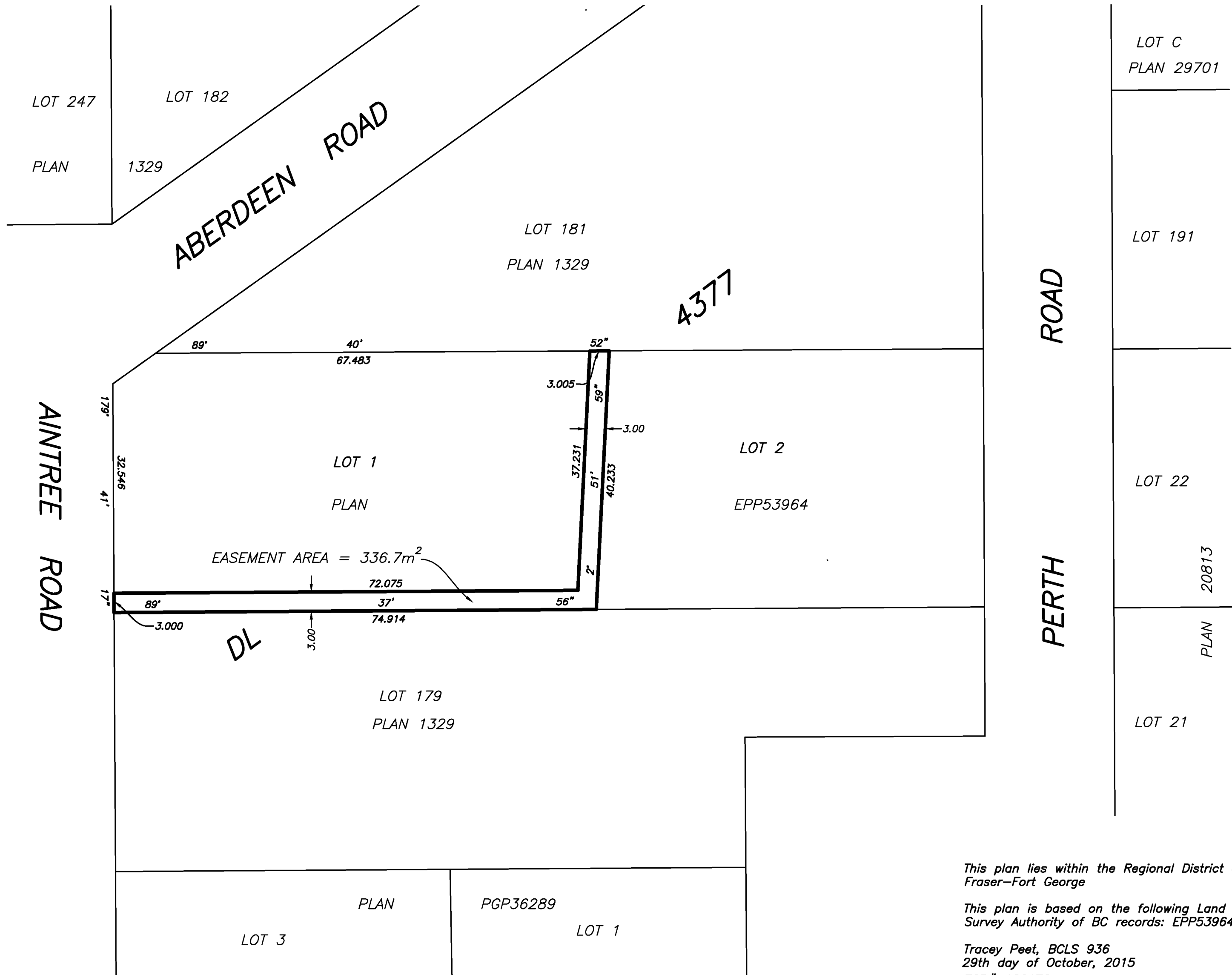
The intended plot size of this plan is 560mm in width by 432mm in height (C size) when plotted at a scale of 1:750.

Integrated Survey Area No. 39, Prince George, NAD83 (CSRS) 4.0.0.BC.1

Grid bearings are derived from previously integrated Plan EPP53964.

This plan shows horizontal ground-level distances unless otherwise specified. To compute grid distances, multiply ground-level distances by the average combined factor of 0.9995058 which has been derived from Plan EPP53964.

PLAN EPP56778



This plan lies within the Regional District of Fraser-Fort George

This plan is based on the following Land Title and Survey Authority of BC records: EPP53964

Tracey Peet, BCLS 936
29th day of October, 2015
ECR# 180172



WSP Surveys (BC) Limited Partnership
780-3rd Avenue, Prince George, BC

PROJECT REF./DRAWING No.
010053426-TEEX01-R00