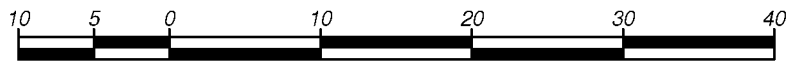


**SUBDIVISION PLAN OF PART OF LOT 1,
DISTRICT LOT 2433, CARIBOO DISTRICT,
PLAN 30220, EXCEPT PLANS 32796 AND
PGP37355.**

PLAN EPP56373

BCGS 93J.007



The intended plot size of this plan is 432mm in width by 560mm in height (C size) when plotted at a scale of 1:500.

All distances are in metres and decimals thereof.

LEGEND

Integrated Survey Area No. 39, City of Prince George, NAD83 (CSRS) 4.0.0.BC.1

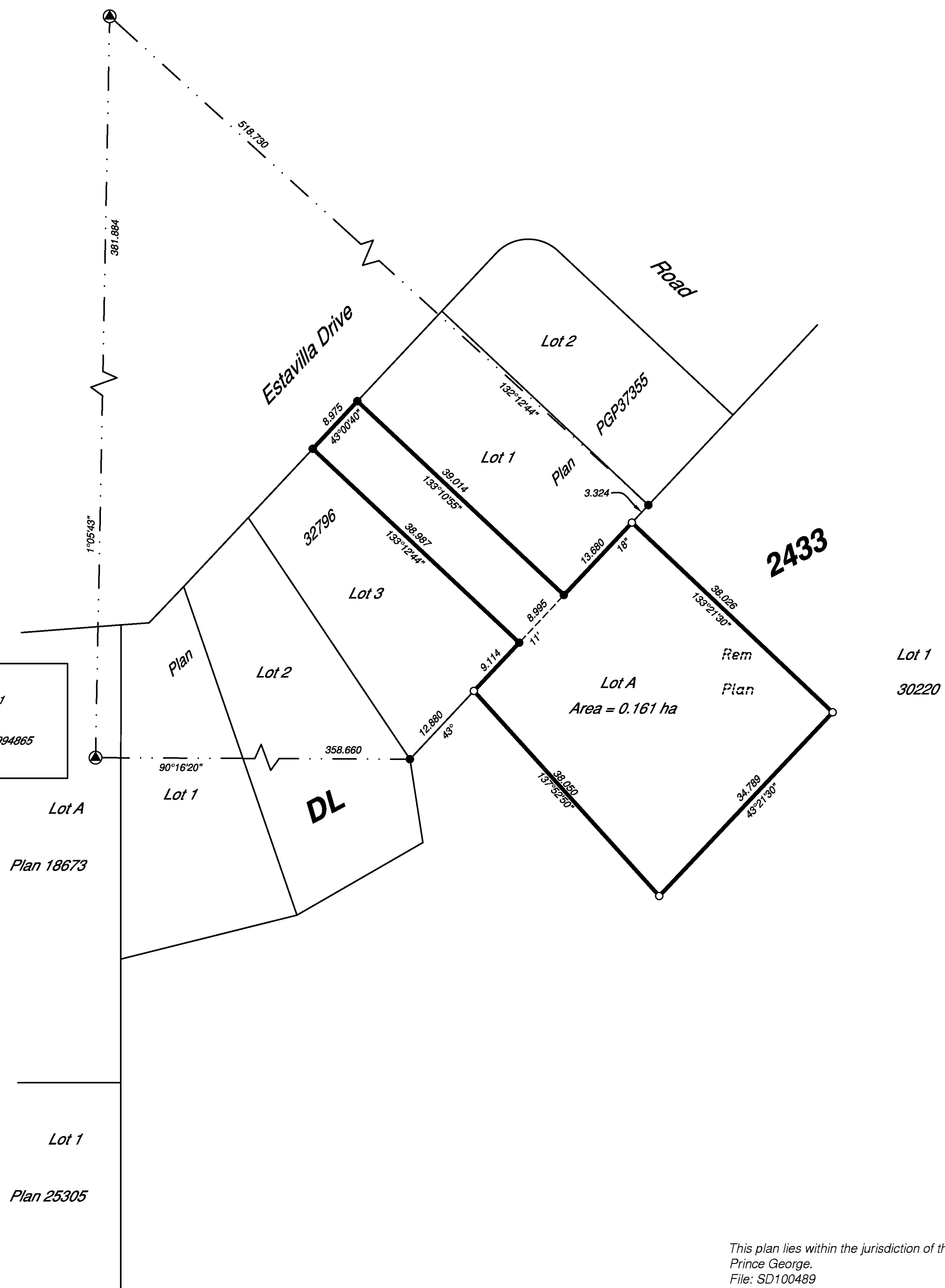
Grid bearings are derived from observations between geodetic control monuments 86H1704 and 86H1803.

This plan shows horizontal ground-level distances unless otherwise specified. To compute grid distances, multiply ground-level distances by the average combined factor of 0.9994862 which has been derived from geodetic control monument 86H1803.

- denotes control monument found
- denotes standard iron post found
- denotes standard iron post placed

86H1803
UTM Zone 10 North
Datum: NAD83(CSRS) 4.0.0.BC.1
UTM Northing: 5984718.321
UTM Easting: 513039.123
Point Combined Factor: 0.9994862
Estimated Horizontal Positional Accuracy: 0.05

86H1704
UTM Zone 10 North
Datum: NAD83(CSRS) 4.0.0.BC.1
UTM Northing: 5984336.705
UTM Easting: 513031.827
Point Combined Factor: 0.9994865
Estimated Horizontal Positional Accuracy: 0.05



This plan lies within the jurisdiction of the Approving Officer for the City of Prince George.
File: SD100489

This plan lies within the Regional District of Fraser-Fort George

The field survey represented by this plan was completed on the 13th day of October, 2015.

Tracey Peet, BCLS 936
ECR# 179711



WSP Surveys (BC) Limited Partnership
780-3rd Avenue, Prince George, BC

PROJECT REF./DRAWING No.
010054148-SDSU01-R02