

**PLAN OF STATUTORY RIGHT OF WAY OVER  
PART OF LOTS 52 TO 57, INCLUSIVE, DISTRICT LOT 2425,  
CARIBOO DISTRICT, PLAN EPP55596.**

**PLAN EPP56356**

BCGS 93J.006

Pursuant to Section 113  
of the Land Title Act.

Scale: 1 : 750 (Distances are in metres)



INTEGRATED SURVEY AREA No. 39, CITY OF PRINCE GEORGE NAD83(CSRS).

GRID BEARINGS ARE DERIVED FROM PREVIOUSLY INTEGRATED PLAN EPP55596

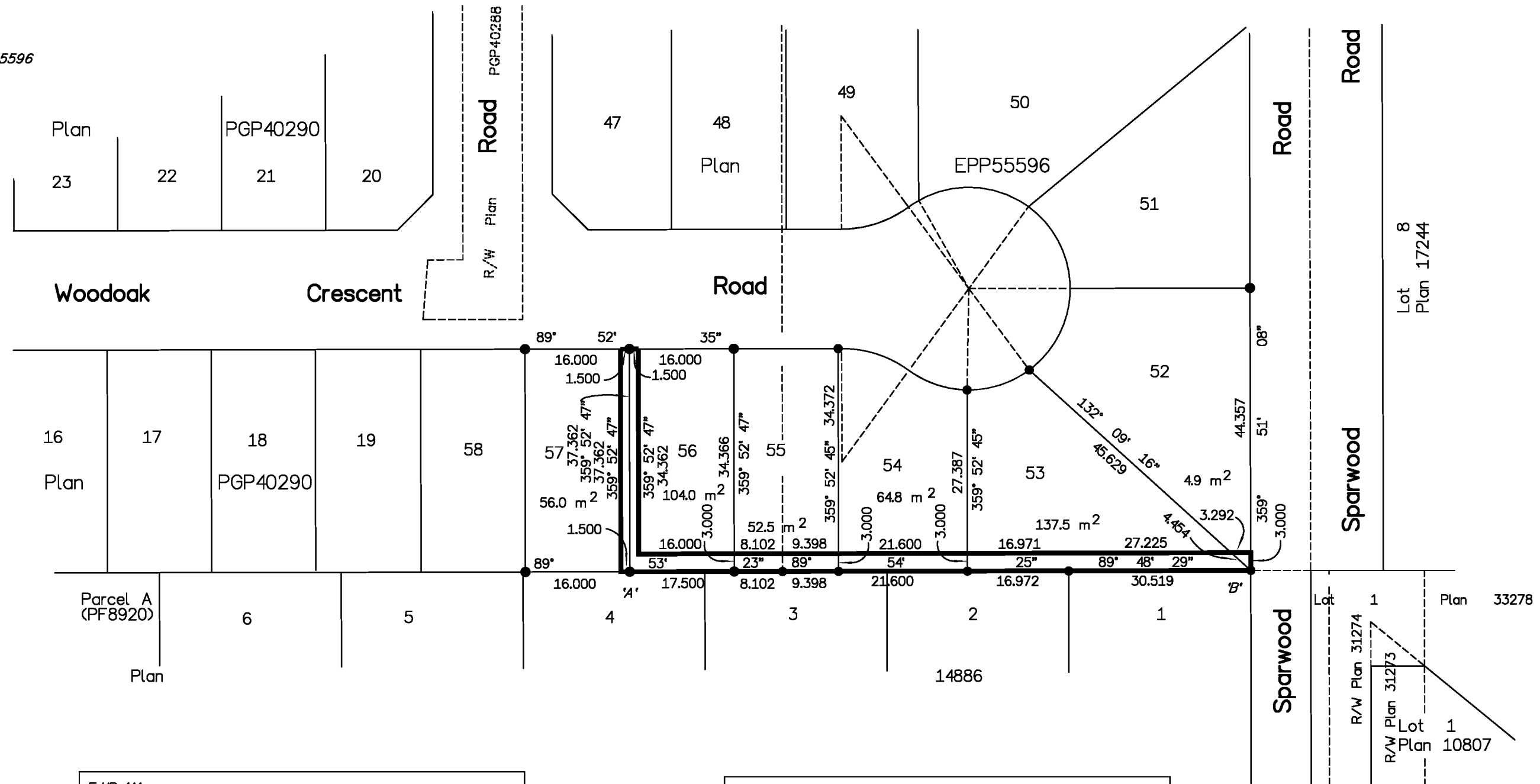
THIS PLAN SHOWS HORIZONTAL GROUND-LEVEL DISTANCES, UNLESS OTHERWISE SPECIFIED. TO COMPUTE GRID DISTANCES, MULTIPLY GROUND-LEVEL DISTANCES BY THE AVERAGE COMBINED FACTOR OF 0.9994835 WHICH HAS BEEN DERIVED FROM 86H1588 AND 86H1610.

THE UTM COORDINATES AND ESTIMATED NETWORK HORIZONTAL POSITIONAL ACCURACY ACHIEVED ARE DERIVED FROM PREVIOUSLY INTEGRATED PLAN EPP55596

**LEGEND**

● Standard Iron Post Found

BOOK OF REFERENCE	
DESCRIPTION	AREA
Lot 52, Plan EPP55596	4.9 m <sup>2</sup>
Lot 53, Plan EPP55596	137.5 m <sup>2</sup>
Lot 54, Plan EPP55596	64.8 m <sup>2</sup>
Lot 55, Plan EPP55596	52.5 m <sup>2</sup>
Lot 56, Plan EPP55596	104.0 m <sup>2</sup>
Lot 57, Plan EPP55596	56.0 m <sup>2</sup>



F.d.P. 'A'  
DATUM.....NAD83(CSRS), VERSION 4.0.0.BC.1  
UTM NORTHING.....5984721.20  
UTM EASTING.....512115.38  
ESTIMATED HORIZONTAL POSITIONAL ACCURACY IS 0.05 METRES.

F.d.P. 'B'  
DATUM.....NAD83(CSRS), VERSION 4.0.0.BC.1  
UTM NORTHING.....5984721.41  
UTM EASTING.....512202.46  
ESTIMATED HORIZONTAL POSITIONAL ACCURACY IS 0.05 METRES.

THE FIELD SURVEY REPRESENTED BY THIS PLAN  
WAS COMPLETED ON THE 16th DAY OF SEPTEMBER, 2015.  
SHAUNA GOERTZEN, BCLS 798

THIS PLAN LIES WITHIN THE REGIONAL DISTRICT OF FRASER - FORT GEORGE.

**McElhanney**  
McElhanney Associates  
Land Surveying Ltd.  
Prince George, B.C.  
E-mail: pgmals@mcElhanney.com  
Ph: (250) 561-2229 Fax: (250) 563-1941

DL - 2425	File No. 5264-RW-3
CPG File No. SD100425	